



£1,000 Per Month
Blakesley Mews, Yardley,
Birmingham, B25 8TU

***** SEMI DETACHED HOUSE TO RENT
IN YARDLEY!**** CLOSE TO ALL
AMENITIES!! *** TWO BEDROOMS
*****AVAILABLE NOW!!!! Call 0121 783
3422 TO VIEW ***

A TWO bedroom semi detached
property accessed via a DRIVEWAY
along with a GARAGE and briefly
comprising of an entrance, hallway,
FAMILY KITCHEN, lounge and rear
garden on the ground floor with TWO
BEDROOMS and bathroom on the first
floor. The property also benefits from
electric storage heating and double
glazing both where specified.
THE PROPERTY WILL BE AVAILABLE
NOW!!

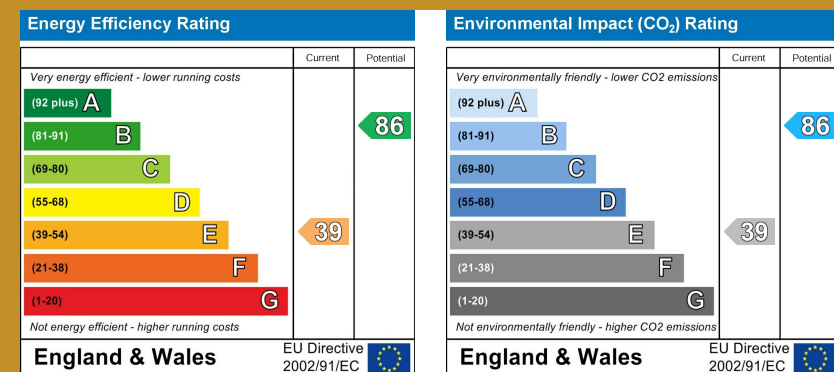
Energy Rating E

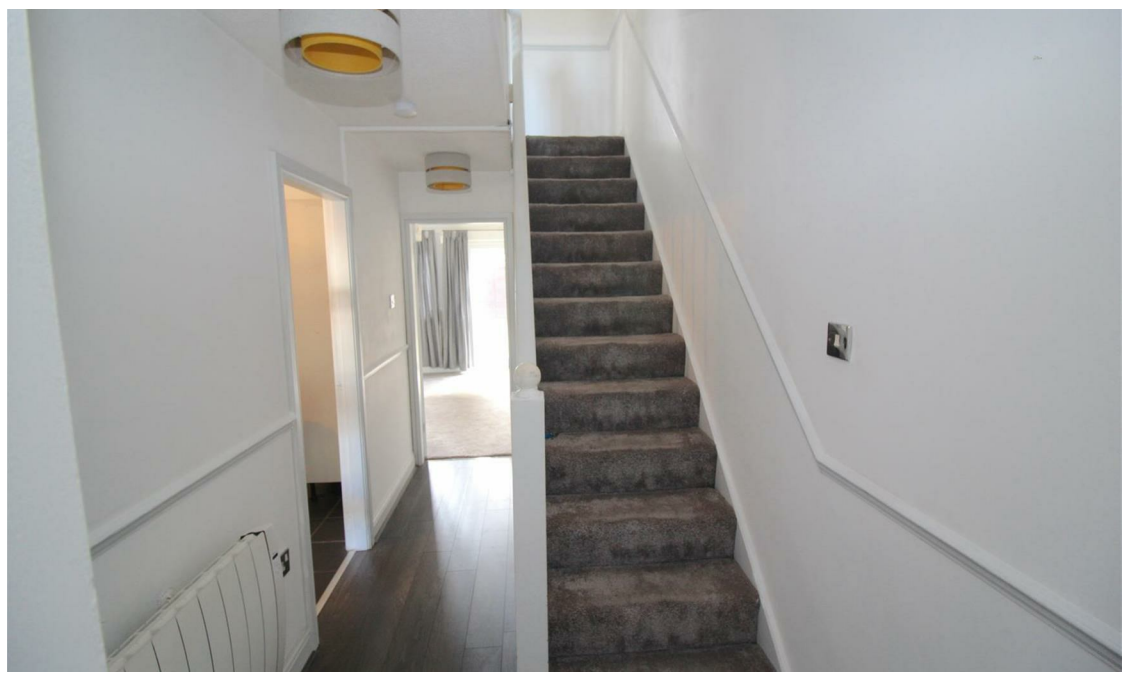
EPC Rating

Current: E
Potential: B

Council tax band

Band = C





167 - 169 Church Road, Yardley, Birmingham, B25 8UR
yardley@primeestatesuk.com