



HUNTERS®
HERE TO GET *you* THERE

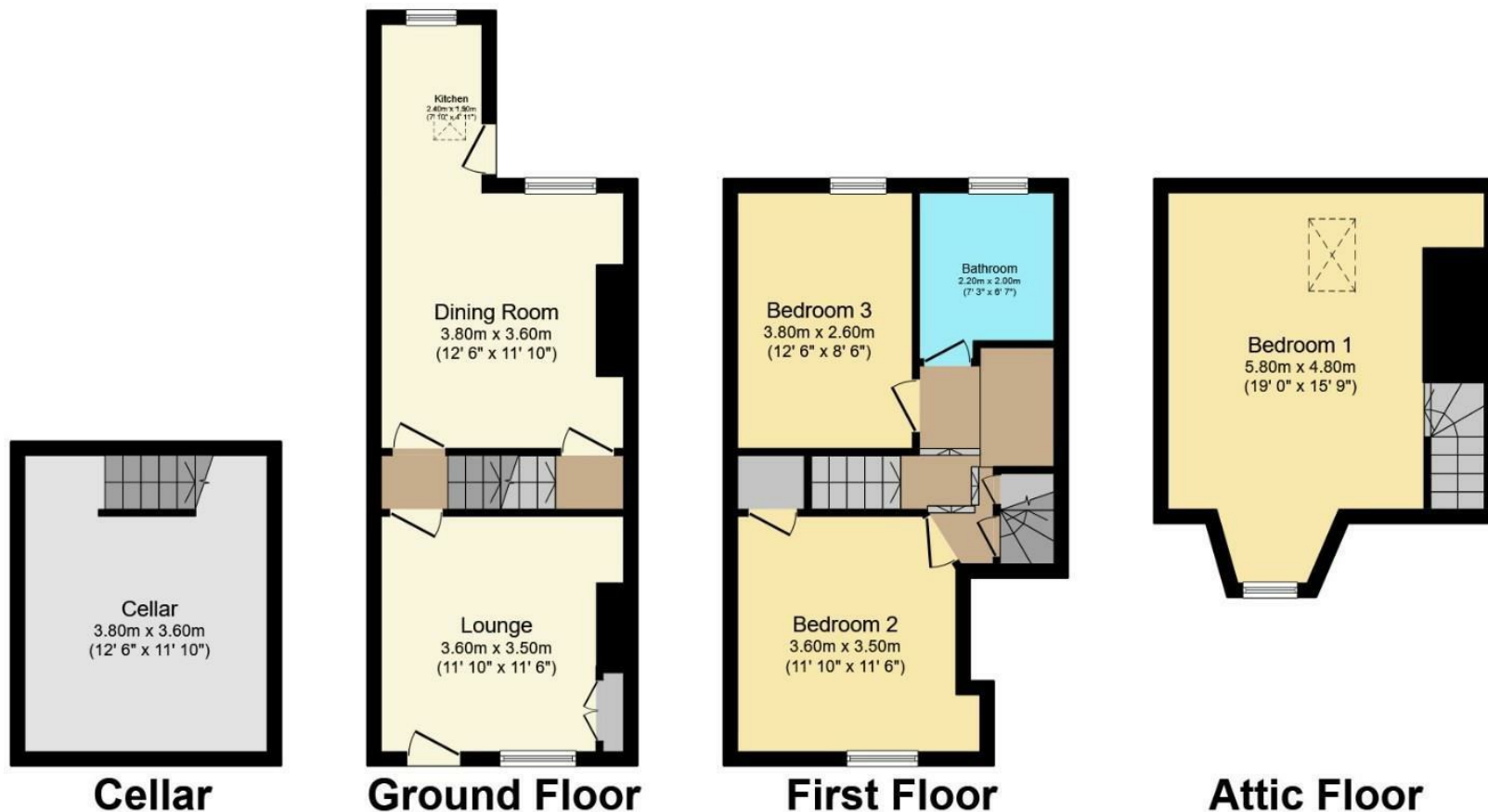
15 Harrison Road, Sheffield, S6 4NA

15 Harrison Road, Sheffield, S6 4NA

Asking Price £230,000

Hunters Hillsborough are delighted to present a three bedroom mid terrace home situated in the popular residential district of Hillsborough. This stone fronted property offers accommodation over three levels and a delightful rear garden. Entry to the property via the back door into the kitchen diner. The kitchen is a bright space with natural light coming through the Velux in the ceiling. There's a fantastic range of wall and base units with integrated appliances including an electric oven, gas hob and a dishwasher. Under counter space for a washing machine and room for a tall standing fridge freezer. The dining area looks out over the garden with a brick built fireplace and a free standing electric fire included in the sale. Access to the cellar head. Through to the inner lobby with stairs rising to the first floor. Front facing lounge with high ceilings and double coving. Open fire which is regularly swept and built in cupboard space. Access to the front of the property via the front door. The first floor offers two double bedrooms and the family bathroom with a white three piece suite comprising bath, shower over bath, W/C and sink basin. There is a large storage cupboard on the landing and stairs rise to the attic bedroom. Supersized attic with a Velux and a dormer window, currently used as storage and a home office. Outside the property is set back from the road with Stone steps up to the front door. Relaxing rear garden with a stone patio area, ideal for garden furniture. Steps down to the lawn with pear and apple trees and a raised decked area.

Hunters Sheffield - Hillsborough 1 Middlewood Road, Hillsborough, S6 4GU | 0114 242 4260
hillsborough@hunters.com | www.hunters.com



Total floor area 108.4 m² (1,167 sq.ft.) approx

This floor plan is for illustrative purposes only. It is not drawn to scale. Any measurements, floor areas (including any total floor area), openings and orientation are approximate. No details are guaranteed, they cannot be relied upon for any purpose and they do not form part of any agreement. No liability is taken for any error, omission or misstatement. A party must rely upon its own inspection(s).
 Powered by www.focalagent.com

General Remarks

TENURE

This property is Freehold.

RATING ASSESSMENT

We are verbally advised by the Local Authority that the property is assessed for Council Tax purposes to Band A.

VACANT POSSESSION

Vacant possession will be given on completion and all fixtures and fittings mentioned in the above particulars are to be included in the sale.

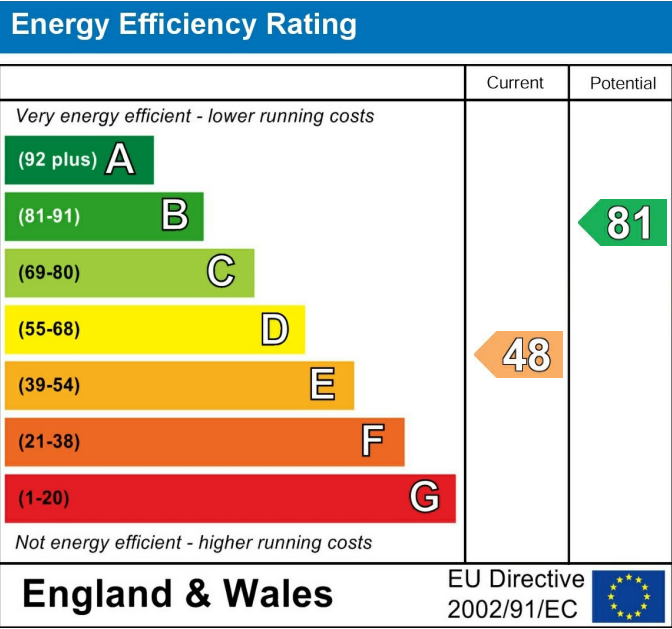
MORTGAGE FACILITIES

We should be pleased to advise you in obtaining the best type of Mortgage to suit your individual requirements.

YOUR HOME IS AT RISK IF YOU DO NOT KEEP UP REPAYMENTS ON A MORTGAGE OR OTHER LOANS SECURED ON IT.

Local Area

Harrison Road commands a convenient location with easy access to bus routes and the Sheffield Supertram network. Within walking distance to local supermarkets and the main shopping centre of Hillsborough. Rivelin Valley and Hillsborough park are ideal for out door adventures.



These particulars are intended to give a fair and reliable description of the property but no responsibility for any inaccuracy or error can be accepted and do not constitute an offer or contract. We have not tested any services or appliances (including central heating if fitted) referred to in these particulars and the purchasers are advised to satisfy themselves as to the working order and condition. If a property is unoccupied at any time there may be reconnection charges for any switched off/disconnected or drained services or appliances - All measurements are approximate. If you are thinking of selling your home or just curious to discover the value of your property, Hunters would be pleased to provide free, no obligation sales and marketing advice. Even if your home is outside the area covered by our local offices we can arrange a Market Appraisal through our national network of Hunters estate agents.

