



Whippingham Road, Brighton, East Sussex BN2 3PF £1,350 PCM

UK Guarantor Required PS&B are delighted to present this MODERNISED/RECENTLY REFURBISHED two double bedroom split-level flat on the first floor of a period conversion. The property consists of a BRIGHT AND SPACIOUS open-plan living room/kitchen area, a modern kitchen with electric oven, hob and integrated fridge, full suite bathroom with shower over the bath and a storage cupboard housing the washing machine, two SPACIOUS AND BRIGHT double bedrooms. Further benefits include GAS CENTRAL HEATING, double glazing throughout and a popular Brighton location, close to all local amenities, including Sainsbury's and Aldi.

Offered unfurnished and available immediately.

Holding Deposit - £311.00

Deposit - £1,557.00

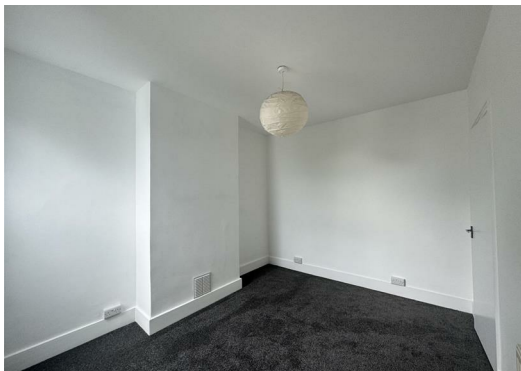
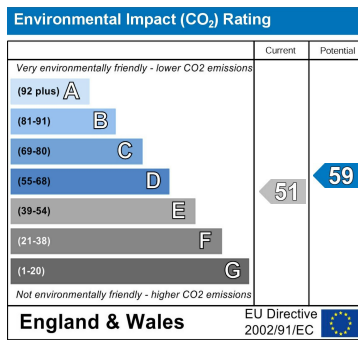
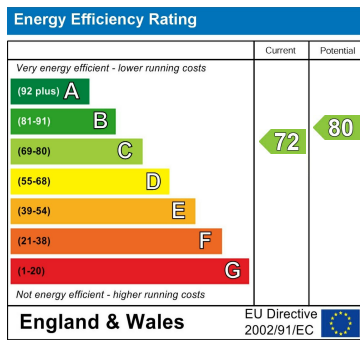
Tenancy Length - 12 Months (Preferred)

Council Tax Band - A

EPC - C

Parking Zone - S





VIEWING: BY APPOINTMENT THROUGH PARSONS SON & BASLEY
TEL: 01273 274 040

THE PROPERTY MISDESCRIPTIONS ACT 1991:

The Agent has not tested any apparatus, equipment, fixtures and fittings or services and so cannot verify that they are in working order or fit for the purpose. A Buyer is advised to obtain verification from their Solicitor or Surveyor.

References to the Tenure of a Property are based on information supplied by the Seller. The Agent has not had sight of the title documents. A Buyer is advised to obtain verification from their Solicitor. Items shown in photographs are NOT included unless specifically mentioned within the sale particulars. They may however be available by separate negotiation. Buyers must check the availability of any property and make an appointment to view before embarking on any journey to see a property.

DATA PROTECTION ACT 1998:

Please note that all personal information provided by customers wishing to receive information and/or services from the estate agent will be processed by the estate agent, for the purpose of providing services associated with the business of an estate agent and for the additional purposes set out in the privacy policy, copies available on request but specifically excluding mailings or promotions by a third party. If you do not wish your personal information to be used for any of these purposes, please notify your estate agent