

12 Wallasey Avenue, Fallowfield, Manchester, M14 7AL



JP&Brimelow
ESTATE AGENTS

Offers In The Region Of £250,000

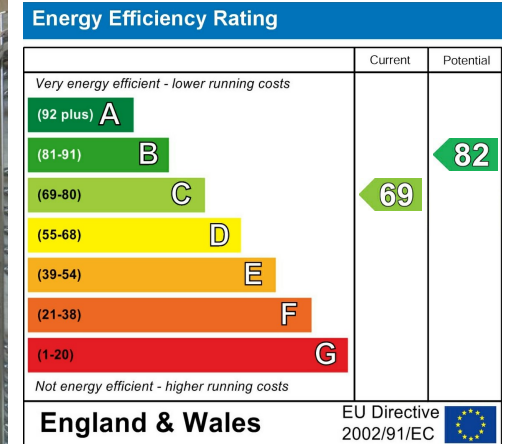
 3  1  1  C

VIDEO TOUR AVAILABLE A THREE BEDROOM semi-detached home, ideally located on a sought-after residential street just off Lloyd Street South in Fallowfield. This property is conveniently close to the vibrant Fallowfield Triangle, offering a range of cafés, shops, a library, and other local amenities. Manchester city centre is just a short drive away, with excellent public transport links nearby. The area also benefits from proximity to Alexandra Park, which offers a variety of sports facilities, as well as Claremont and Wilbraham Road Primary Schools. This well-planned accommodation features an entrance hall, a rear-facing lounge, a fitted kitchen, a utility room, a ground floor W.C, and access to an enclosed rear garden, completing the ground level. Upstairs, the first floor offers a landing that leads to three bedrooms and a two-piece shower room. The property benefits from gas fired central heating, a gated driveway providing secure off-road parking and both front and rear enclosed gardens.



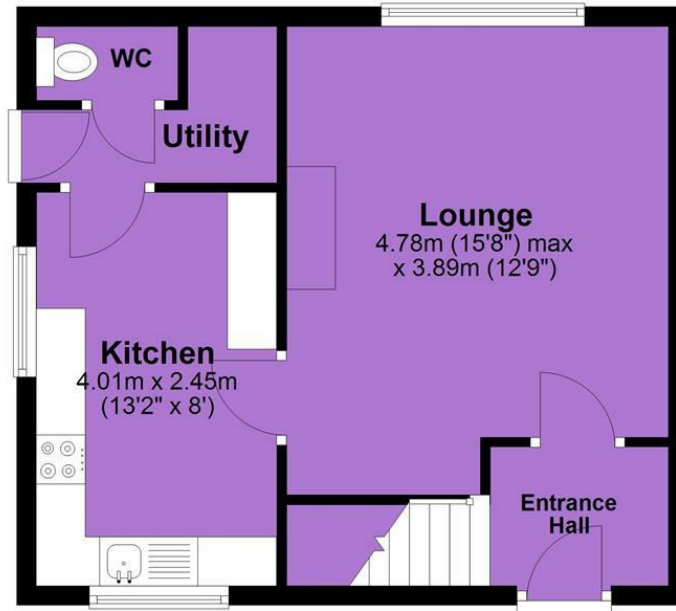


EPC Chart



Tenure: **Freehold** Council Tax Band: **A**

Ground Floor



First Floor



JP & Brimelow Estate Agents Ltd
 430 Barlow Moor Road, Manchester, M21 8AD
 Tel: 0161 8822233
 E: sales@jpbrimelow.co.uk www.jpandbrimelow.co.uk



JP & Brimelow
 ESTATE AGENTS

NOTICE: JP & Brimelow Estate Agents Ltd for themselves and for the vendors or lessors of this property whose agents they are give notice that:

- (i) the particulars are set out as a general outline only for the guidance of intending purchasers or lessees, and do not constitute, nor constitute part of, an offer or contract;
- (ii) all descriptions, dimensions, references to the condition and necessary permissions for use and occupation, and other details are given in good faith and are believed to be correct but any intending purchasers or tenants should not rely on them as statements or representations of fact but must satisfy themselves by inspection or otherwise as to the correctness of each of them;
- (iii) no person in the employment of JP & Brimelow Estate Agents Ltd has any authority to make or give any representation or warranty whatever in relation to this property.

jpandbrimelowestateagents

@jpandbrimelow