

20 Burnage Hall Road, Burnage, Manchester, M19 2JD



JP&Brimelow
ESTATE AGENTS



3 1 2 D

VIDEO TOUR AVAILABLE An attractive and stylishly presented, THREE DOUBLE BEDROOM, mid terrace period property. Located on a popular and quiet residential road in Burnage just off Burnage Lane and close to Levenshulme.

Situated in an ideal location with fantastic transport links into Manchester city centre and Stockport, and the Fallowfield Loop, Station South and Cringle Park all within a short walking distance.

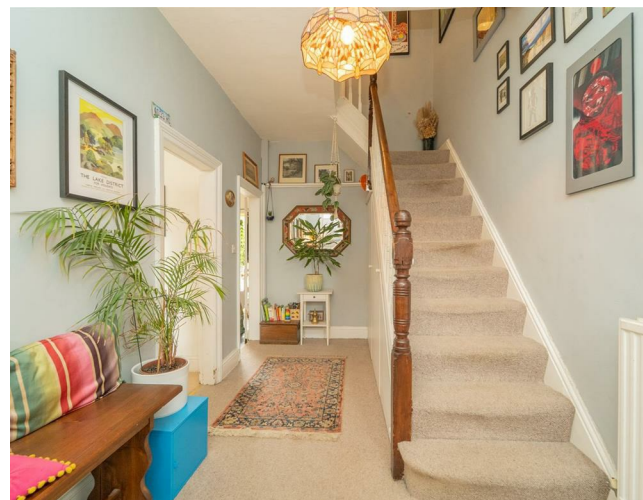
In brief the well planned accommodation consists of; A large and welcoming entrance hall complete with useful under stairs storage, a lounge to the front aspect complete with stove, a delightful open plan fitted kitchen/ dining area.

The dining room has stripped and varnished floor boards and patio doors allowing views and access into the private enclosed garden.

To the first floor there are three good sized bedrooms and a white four-piece bathroom suite.


The property benefits from gas fired central heating, high ceilings, large windows offering lots of natural light, partially stripped and varnished floorboards and a rear enclosed garden with decking.

£300,000





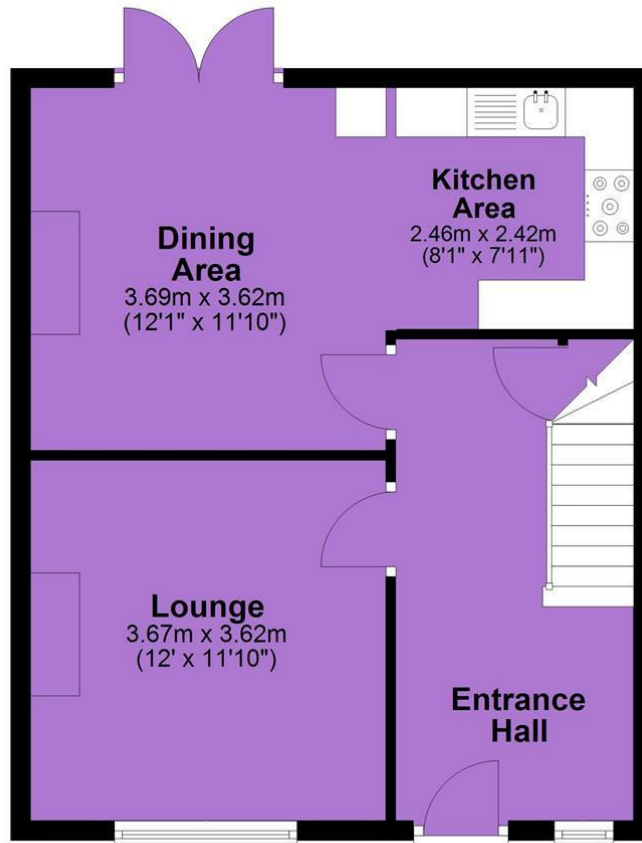
EPC Chart

Energy Efficiency Rating		
	Current	Potential
Very energy efficient - lower running costs		
(92 plus) A		85
(81-91) B		
(69-80) C	68	
(55-68) D		
(39-54) E		
(21-38) F		
(1-20) G		
Not energy efficient - higher running costs		
England & Wales		EU Directive 2002/91/EC 

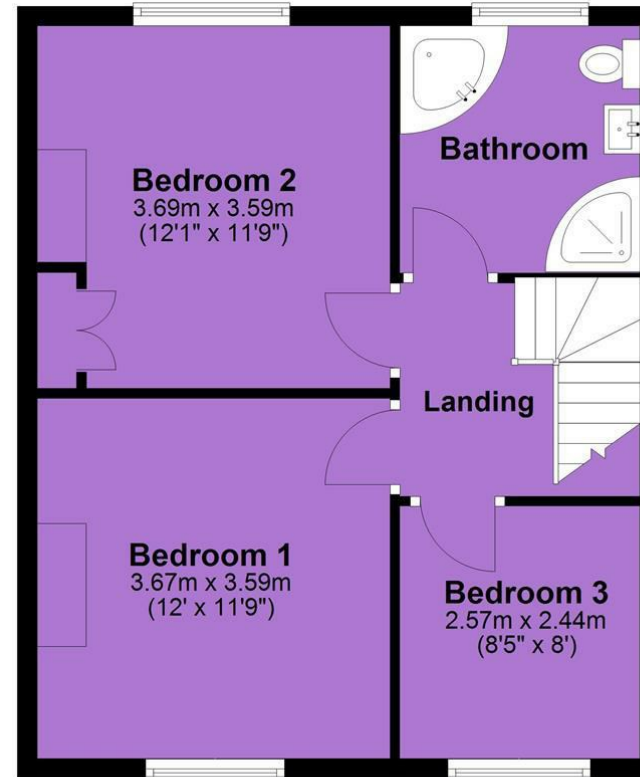


Tenure: Freehold Council Tax Band: B

Ground Floor



First Floor



JP & Brimelow Estate Agents Ltd
 430 Barlow Moor Road, Manchester, M21 8AD
 Tel: 0161 8822233
 E: sales@jpbrimelow.co.uk www.jpandbrimelow.co.uk



JP & Brimelow
 ESTATE AGENTS

NOTICE: JP & Brimelow Estate Agents Ltd for themselves and for the vendors or lessors of this property whose agents they are give notice that:

- (i) the particulars are set out as a general outline only for the guidance of intending purchasers or lessees, and do not constitute, nor constitute part of, an offer or contract;
- (ii) all descriptions, dimensions, references to the condition and necessary permissions for use and occupation, and other details are given in good faith and are believed to be correct but any intending purchasers or tenants should not rely on them as statements or representations of fact but must satisfy themselves by inspection or otherwise as to the correctness of each of them;
- (iii) no person in the employment of JP & Brimelow Estate Agents Ltd has any authority to make or give any representation or warranty whatever in relation to this property.

jpandbrimelowstateagents

@jpandbrimelow

