

16 Cartwright Road, Chorlton Green, Manchester, M21 9EY



**JP&Brimelow**  
ESTATE AGENTS





4 2 2 E

\*\*\*VIDEO TOUR AVAILABLE\*\*\* An extended & immaculately presented, FOUR BEDROOM, mid terrace property. This period, bay fronted home is located on a highly popular residential tree lined road, off Kings Hills Road in the heart of Chorlton Green.

Within a short stroll of all the independent shops, restaurants, delis and bars available on Beech Road and a stone's throw from Chorlton Meadows and the Ees which offer endless walking and running routes on your doorstep.

The well planned accommodation is spread over three floors and consists of; a vestibule, an entrance hall, a stylishly presented lounge to the front aspect which benefits from a bay window, a good sized dining room, a useful under stairs storage cupboard, and a modern fitted kitchen with views and access out into the rear enclosed courtyard.

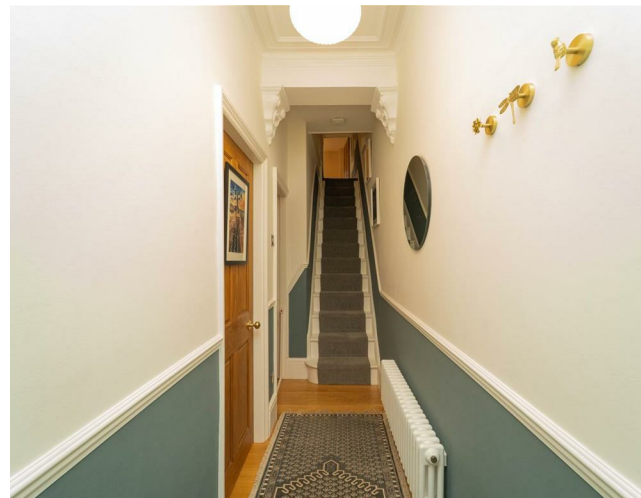
To the first floor there are two sizable double bedrooms, an additional bedroom, and a high-end white three-piece bathroom suite, complete with Neptune vanity.

Stairs leading to the second-floor landing reveal the spacious principal bedroom, complete with en-suite shower room and two useful eaves storage cupboards completing this fantastic property.

The property benefits from gas fired central heating, an alarm system, high ceilings, ceiling coving and picture rails, period features such as original stained glass, ceiling roses, and fireplaces, and a rear enclosed courtyard.

£560,000









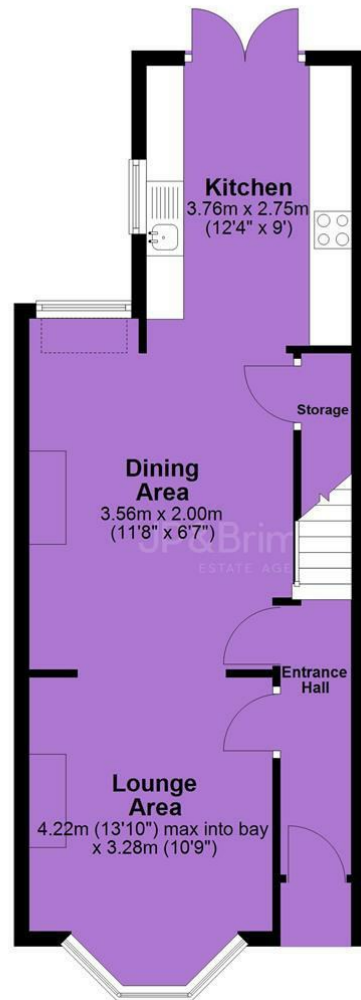
## EPC Chart

Energy Efficiency Rating		Current	Potential
Very energy efficient - lower running costs			
(92 plus)	A		
(81-91)	B		81
(69-80)	C		
(55-68)	D		
(39-54)	E	54	
(21-38)	F		
(1-20)	G		
Not energy efficient - higher running costs			
England & Wales		EU Directive 2002/91/EC	



Tenure: Freehold Council Tax Band: B

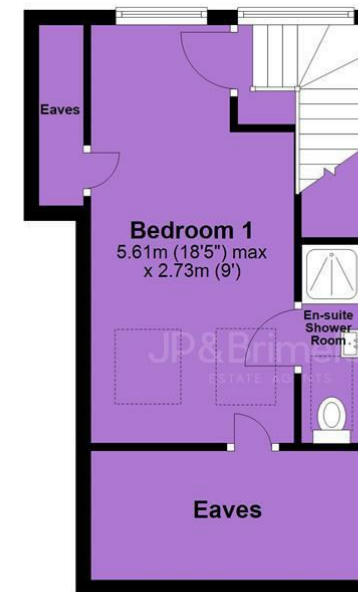
## Ground Floor



## First Floor



## Second Floor



JP & Brimelow Estate Agents Ltd  
430 Barlow Moor Road, Manchester, M21 8AD  
Tel: 0161 8822233  
E: sales@jpbrimelow.co.uk www.jpandbrimelow.co.uk



**JP & Brimelow**  
ESTATE AGENTS

NOTICE: JP & Brimelow Estate Agents Ltd for themselves and for the vendors or lessors of this property whose agents they are give notice that:

- (i) the particulars are set out as a general outline only for the guidance of intending purchasers or lessees, and do not constitute, nor constitute part of, an offer or contract;
- (ii) all descriptions, dimensions, references to the condition and necessary permissions for use and occupation, and other details are given in good faith and are believed to be correct but any intending purchasers or tenants should not rely on them as statements or representations of fact but must satisfy themselves by inspection or otherwise as to the correctness of each of them;
- (iii) no person in the employment of JP & Brimelow Estate Agents Ltd has any authority to make or give any representation or warranty whatever in relation to this property.

jpandbrimelowestateagents

@jpandbrimelow



