

12 Kings Crescent, Old Trafford, Trafford, M16 0LY



JP&Brimelow
ESTATE AGENTS

Offers In The Region Of £350,000

3 1 1 D

VIDEO TOUR AVAILABLE A delightful THREE BEDROOM, semi-detached property. Situated on a quiet residential crescent in the heart of Old Trafford. Kings Crescent is ideally placed for a range of local amenities, including independent cafés, shops, and well-regarded schools, and excellent transport links. Old Trafford Metrolink stop, major bus routes, and nearby road connections provide easy access to Manchester City centre and Salford Quays. In brief, the well-planned accommodation comprises an entrance hall with useful storage area, a good-sized lounge with a feature fireplace, a downstairs W.C and an impressive open fitted kitchen/dining room with access into the rear enclosed garden. To the first floor there is a landing leading to three good sized bedrooms and a four-piece modern bathroom suite completes this lovely home. The property benefits from gas fired central heating and a rear enclosed garden.





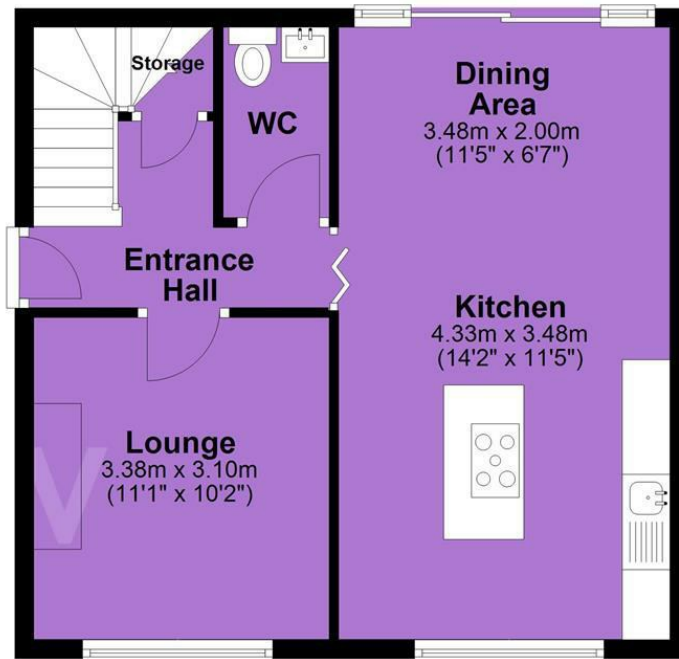
EPC Chart

Energy Efficiency Rating		
	Current	Potential
Very energy efficient - lower running costs		
(92 plus) A		
(81-91) B		83
(69-80) C		
(55-68) D	66	
(39-54) E		
(21-38) F		
(1-20) G		
Not energy efficient - higher running costs		
England & Wales		EU Directive 2002/91/EC

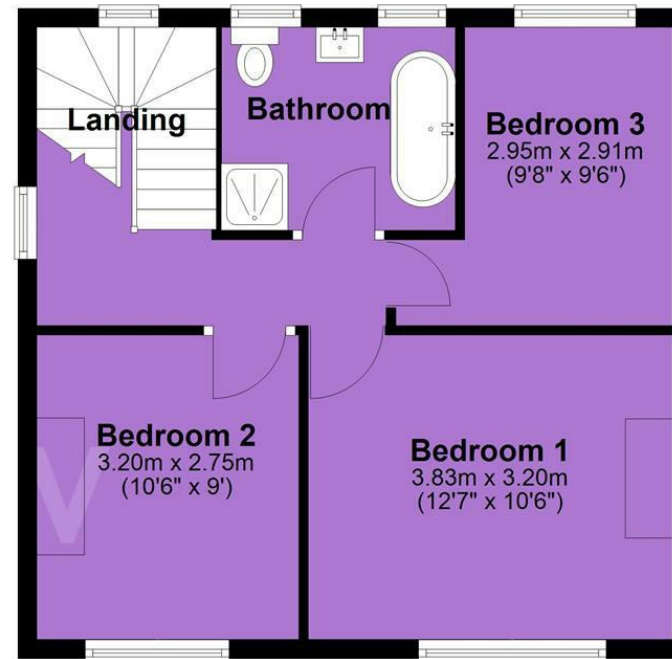


Tenure: **Freehold** Council Tax Band: **B**

Ground Floor



First Floor



JP & Brimelow Estate Agents Ltd
430 Barlow Moor Road, Manchester, M21 8AD
Tel: 0161 8822233
E: sales@jpbrimelow.co.uk www.jpandbrimelow.co.uk



JP & Brimelow
ESTATE AGENTS

NOTICE: JP & Brimelow Estate Agents Ltd for themselves and for the vendors or lessors of this property whose agents they are give notice that:

- (i) the particulars are set out as a general outline only for the guidance of intending purchasers or lessees, and do not constitute, nor constitute part of, an offer or contract;
- (ii) all descriptions, dimensions, references to the condition and necessary permissions for use and occupation, and other details are given in good faith and are believed to be correct but any intending purchasers or tenants should not rely on them as statements or representations of fact but must satisfy themselves by inspection or otherwise as to the correctness of each of them;
- (iii) no person in the employment of JP & Brimelow Estate Agents Ltd has any authority to make or give any representation or warranty whatever in relation to this property.

jpandbrimelowestateagents

@jpandbrimelow