

40, 42 & 44 Land at rear of Chequers Road, Chorlton Green, Manchester, M21 9DX

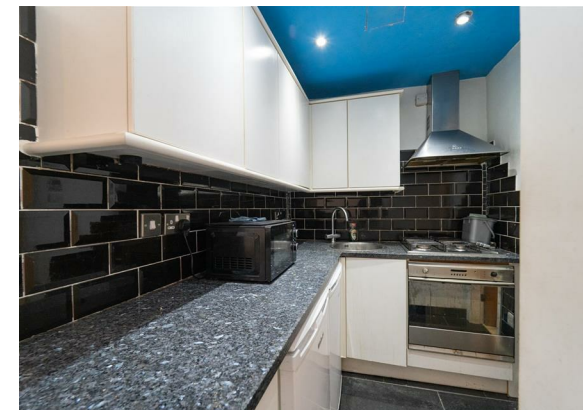


JP&Brimelow
ESTATE AGENTS

Offers Over £180,000

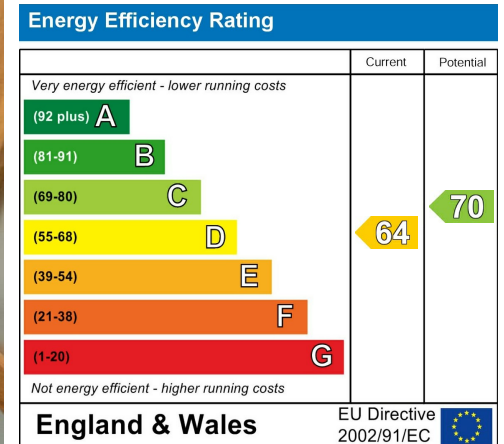
1 1 1 D

VIDEO TOUR AVAILABLE A rare and unique opportunity to purchase this semi-detached coach house known locally as 'land at the rear of Chequers Road, Chorlton Green', discretely set back off Beech Road in the heart of Chorlton Green. Centrally located next to all the independent shops, bars and restaurants on Beech Road and Beech Road Park. Accessed off either Beech Road or Acres Road via secure pedestrian gates the property features a secure walled garden and flexible open plan accommodation. Positioned behind 40-42 & 44 Chequers Road. The property consists of an entrance conservatory with double doors leading into the open plan living area with vaulted ceilings, a kitchen area with space for appliances, a modern three-piece shower room, a large storage room. Stairs lead up to the mezzanine level / bed deck area completing this unique one of a kind property. The property benefits from gas central heating, underfloor heating, ample built in storage and a generous walled enclosed garden. OFFERED WITH NO VENDOR CHAIN. Early viewing is highly recommended to appreciate this home. Call our team on 0161 882 2233 to book a viewing appointment prior to the AUCTION.



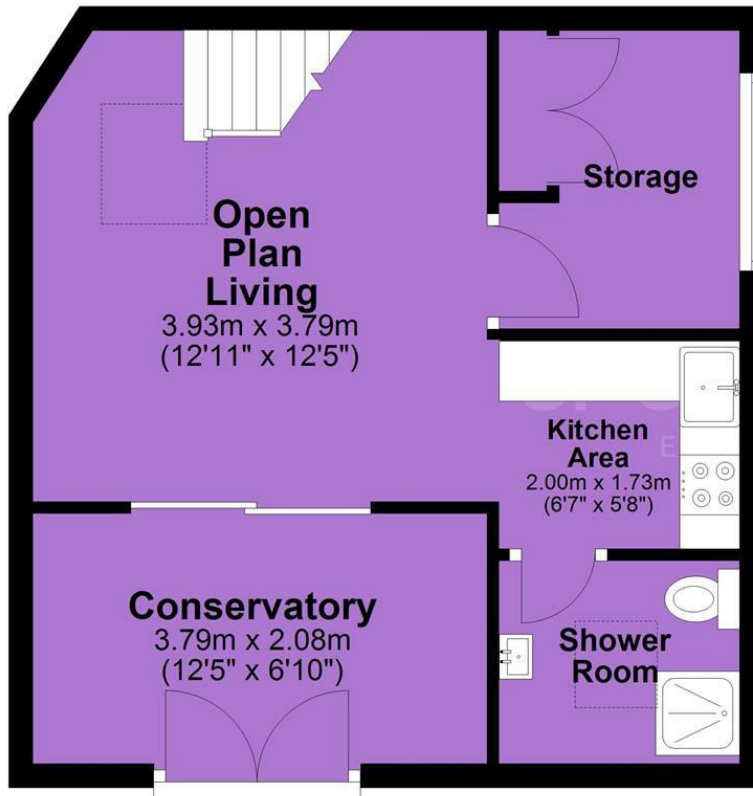


EPC Chart

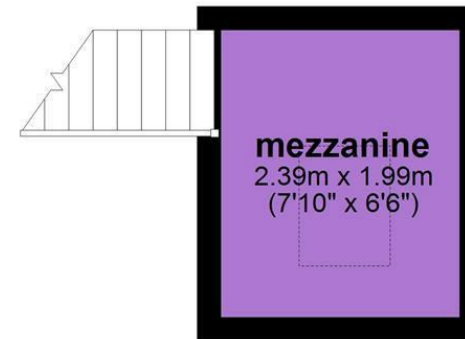


Tenure: **Freehold** Council Tax Band: **A**

Ground Floor



First Floor



JP & Brimelow Estate Agents Ltd
430 Barlow Moor Road, Manchester, M21 8AD
Tel: 0161 8822233

E: sales@jpbrimelow.co.uk www.jpandbrimelow.co.uk



JP & Brimelow
ESTATE AGENTS

NOTICE: JP & Brimelow Estate Agents Ltd for themselves and for the vendors or lessors of this property whose agents they are give notice that:

- (i) the particulars are set out as a general outline only for the guidance of intending purchasers or lessees, and do not constitute, nor constitute part of, an offer or contract;
- (ii) all descriptions, dimensions, references to the condition and necessary permissions for use and occupation, and other details are given in good faith and are believed to be correct but any intending purchasers or tenants should not rely on them as statements or representations of fact but must satisfy themselves by inspection or otherwise as to the correctness of each of them;
- (iii) no person in the employment of JP & Brimelow Estate Agents Ltd has any authority to make or give any representation or warranty whatever in relation to this property.

jpandbrimelowestateagents

@jpandbrimelow