

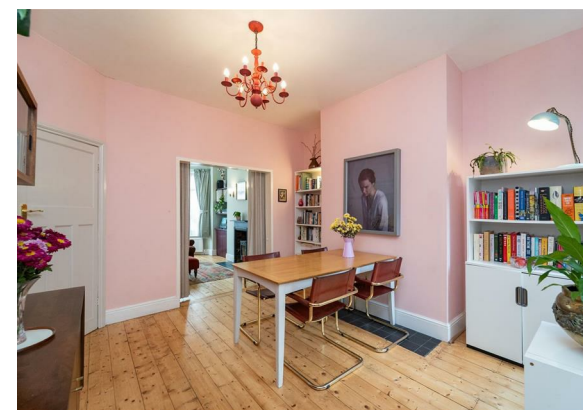
60 Norton Street, Old Trafford, Trafford, M16 7GR



Offers In The Region Of £335,000

 3  1  2  c

VIDEO TOUR AVAILABLE A well-presented, bay-fronted THREE BEDROOM mid-terraced period property located on Norton Street in Old Trafford. Positioned on the borders of Whalley Range, this home is just a short stroll from Seymour and Hullard Parks and within easy reach of the local amenities on Upper Chorlton Road. The property benefits from excellent transport links, with Trafford Bar Metrolink station nearby, providing direct access to Manchester City Centre, MediaCityUK, and Manchester Airport. This charming home features an entrance hall, a welcoming lounge with a bay window to the front, flowing seamlessly into a dining room on the ground floor, along with a fitted kitchen that provides access to the rear courtyard. The first floor comprises two generous double bedrooms, an additional bedroom, and a three-piece family bathroom. This property boasts many desirable features, including gas central heating, high ceilings, decorative coving, fireplaces, and a rear enclosed courtyard. Early viewing is advised.





EPC Chart

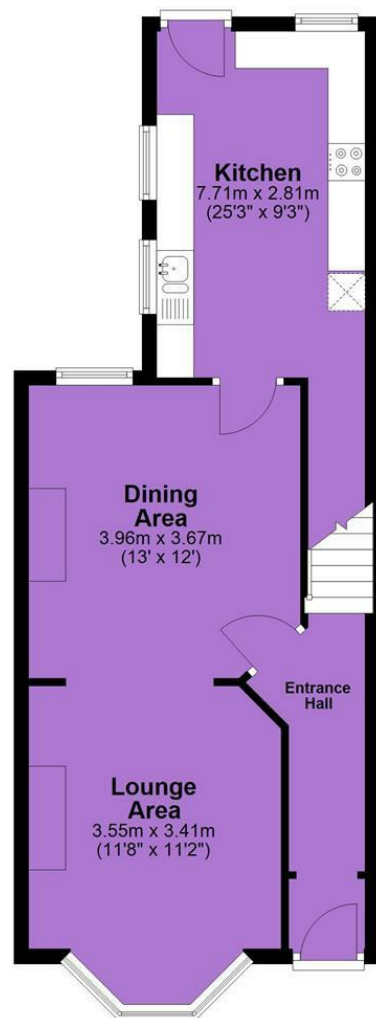
Energy Efficiency Rating

	Current	Potential
Very energy efficient - lower running costs		
(92 plus) A		
(81-91) B		82
(69-80) C	73	
(55-68) D		
(39-54) E		
(21-38) F		
(1-20) G		
Not energy efficient - higher running costs		
England & Wales		EU Directive 2002/91/EC

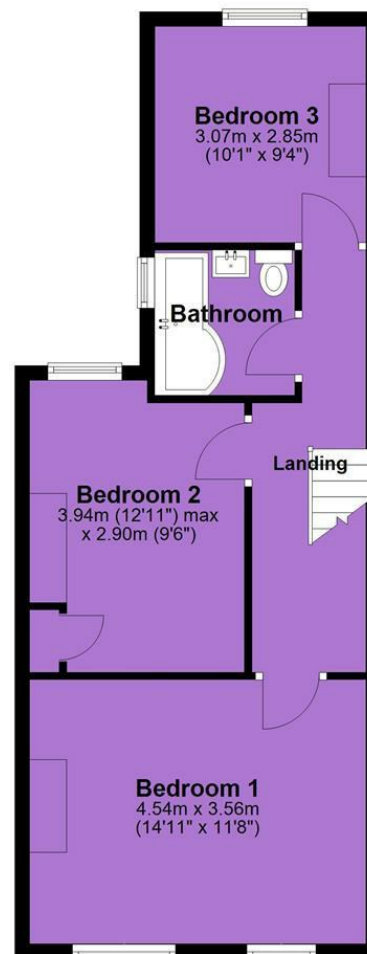


Tenure: **Leasehold** Council Tax Band: **B**

Ground Floor



First Floor



JP & Brimelow Estate Agents Ltd
430 Barlow Moor Road, Manchester, M21 8AD
Tel: 0161 8822233
E: sales@jpbrimelow.co.uk www.jpandbrimelow.co.uk



JP & Brimelow
ESTATE AGENTS

NOTICE: JP & Brimelow Estate Agents Ltd for themselves and for the vendors or lessors of this property whose agents they are give notice that:

- (i) the particulars are set out as a general outline only for the guidance of intending purchasers or lessees, and do not constitute, nor constitute part of, an offer or contract;
- (ii) all descriptions, dimensions, references to the condition and necessary permissions for use and occupation, and other details are given in good faith and are believed to be correct but any intending purchasers or tenants should not rely on them as statements or representations of fact but must satisfy themselves by inspection or otherwise as to the correctness of each of them;
- (iii) no person in the employment of JP & Brimelow Estate Agents Ltd has any authority to make or give any representation or warranty whatever in relation to this property.

jpandbrimelowestateagents

@jpandbrimelow