

308 Mauldeth Road West, Chorlton, Manchester, M21 7RF



JP&Brimelow
ESTATE AGENTS

Offers In The Region Of £375,000

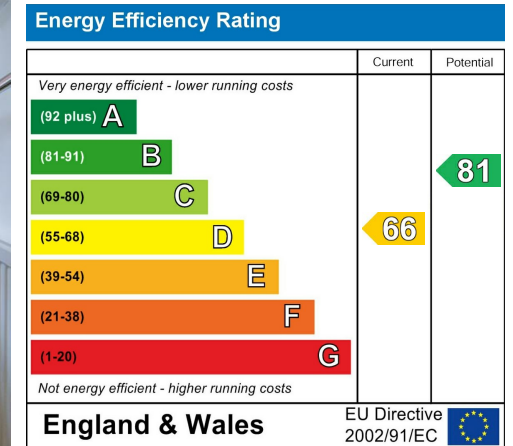
 3  1  1  D

VIDEO TOUR AVAILABLE A delightful and well-kept, THREE DOUBLE BEDROOM, semi-detached, traditional property. Situated on a popular, tree lined residential road in Chorlton. Close by to the Metrolink station on Mauldeth Road West giving access to the City Centre, Manchester International Airport and Media City. Strolling distance to Hough End Playfields, Chorlton centre and West Didsbury amenities on Burton Road. In brief the well-planned accommodation consists of; a porch, an entrance hall with useful storage cupboard, a good-sized lounge area which has views and access out into the rear garden, a fitted kitchen completes the ground floor. Stairs leading to the first floor reveal three double bedrooms, a two-piece bathroom suite and a separate W.C completing this lovely home. The property benefits from gas fired central heating, a driveway and garage providing off road parking, solar panels, and a rear enclosed garden.



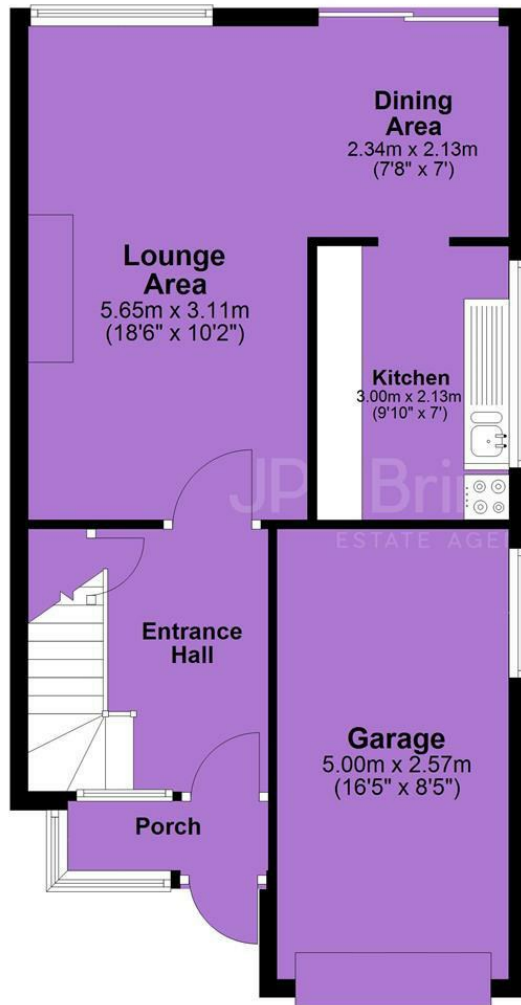


EPC Chart

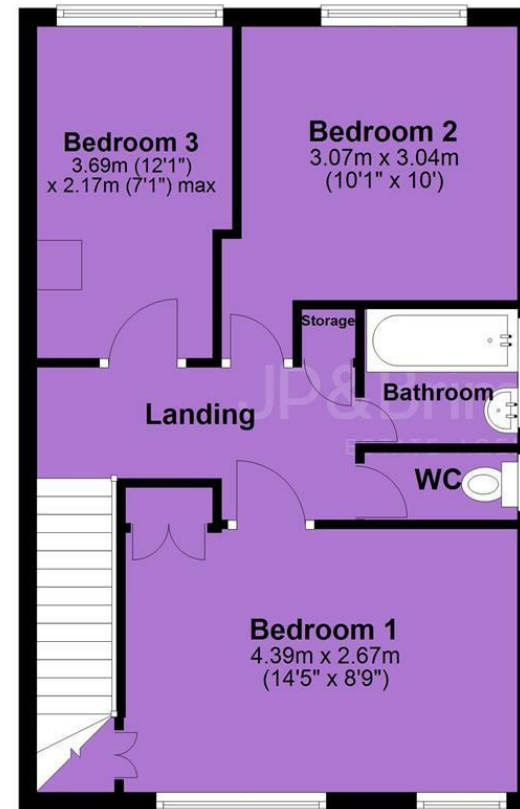


Tenure: **Leasehold** Council Tax Band: **C**

Ground Floor



First Floor



JP & Brimelow Estate Agents Ltd
430 Barlow Moor Road, Manchester, M21 8AD
Tel: 0161 8822233

E: sales@jpbrimelow.co.uk www.jpandbrimelow.co.uk



JP & Brimelow
ESTATE AGENTS

NOTICE: JP & Brimelow Estate Agents Ltd for themselves and for the vendors or lessors of this property whose agents they are give notice that:

- (i) the particulars are set out as a general outline only for the guidance of intending purchasers or lessees, and do not constitute, nor constitute part of, an offer or contract;
- (ii) all descriptions, dimensions, references to the condition and necessary permissions for use and occupation, and other details are given in good faith and are believed to be correct but any intending purchasers or tenants should not rely on them as statements or representations of fact but must satisfy themselves by inspection or otherwise as to the correctness of each of them;
- (iii) no person in the employment of JP & Brimelow Estate Agents Ltd has any authority to make or give any representation or warranty whatever in relation to this property.

jpandbrimelowestateagents

@jpandbrimelow