

Apt 8 Manor Court 51 Manor Drive, Chorlton, Manchester, M21 7JU



**JP&Brimelow**  
ESTATE AGENTS

# Offers In The Region Of £155,000




\*\*\*VIDEO TOUR AVAILABLE\*\*\* A well-presented, spacious & SOUTH FACING, TWO BEDROOM retirement apartment, situated on the ground floor within this sought-after purpose-built development for the over 55's here in Chorlton off Darley Avenue. Within walking distance to Chorlton Water Park, Barlow Moor Road transport links on your doorstep into Manchester City Centre which will provide easy access to a range of amenities including theatres, museums, art galleries and all the excitement of city life and Manchester International Airport for easy national and international flights. This well-planned property consists of a communal entrance hallway, a private entrance hallway, an open plan lounge/dining room with direct access out into the lawned gardens, a white fitted kitchen, one double bedroom with fitted wardrobes, a spacious single bedroom and a modern three-piece shower room. The property benefits from being in an ideal spot in the development and has its own access to the lawned gardens, is warmed by electric heating and has communal parking. Ideally for those looking to downsize without compromising on location. Early viewing is highly recommended.





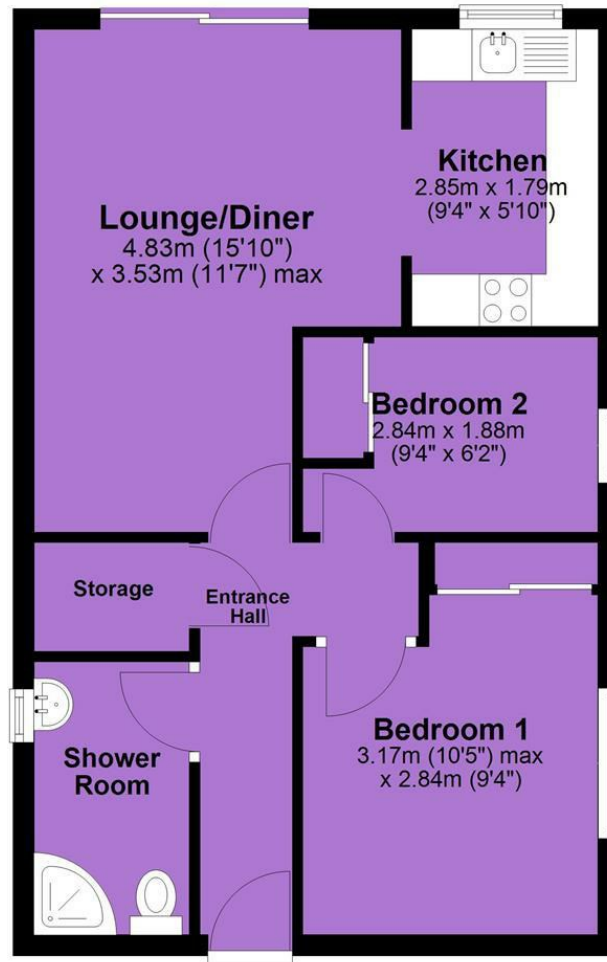
## EPC Chart

Energy Efficiency Rating		
	Current	Potential
<i>Very energy efficient - lower running costs</i>		
(92 plus) <b>A</b>		
(81-91) <b>B</b>		
(69-80) <b>C</b>		
(55-68) <b>D</b>	55	68
(39-54) <b>E</b>		
(21-38) <b>F</b>		
(1-20) <b>G</b>		
<i>Not energy efficient - higher running costs</i>		
<b>England &amp; Wales</b>	EU Directive 2002/91/EC 	



Tenure: **Leasehold** Council Tax Band: **A**

## Ground Floor



JP & Brimelow Estate Agents Ltd  
430 Barlow Moor Road, Manchester, M21 8AD  
Tel: 0161 8822233  
E: sales@jpbrimelow.co.uk www.jpandbrimelow.co.uk



**JP & Brimelow**  
ESTATE AGENTS

NOTICE: JP & Brimelow Estate Agents Ltd for themselves and for the vendors or lessors of this property whose agents they are give notice that:

- (i) the particulars are set out as a general outline only for the guidance of intending purchasers or lessees, and do not constitute, nor constitute part of, an offer or contract;
- (ii) all descriptions, dimensions, references to the condition and necessary permissions for use and occupation, and other details are given in good faith and are believed to be correct but any intending purchasers or tenants should not rely on them as statements or representations of fact but must satisfy themselves by inspection or otherwise as to the correctness of each of them;
- (iii) no person in the employment of JP & Brimelow Estate Agents Ltd has any authority to make or give any representation or warranty whatever in relation to this property.

jpandbrimelowstateagents

@jpandbrimelow