

54 Yew Tree Road, Fallowfield, Manchester, M14 7PP

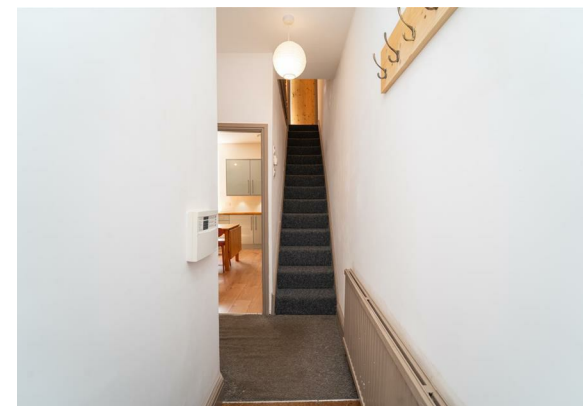


JP&Brimelow
ESTATE AGENTS

Offers In The Region Of £200,000

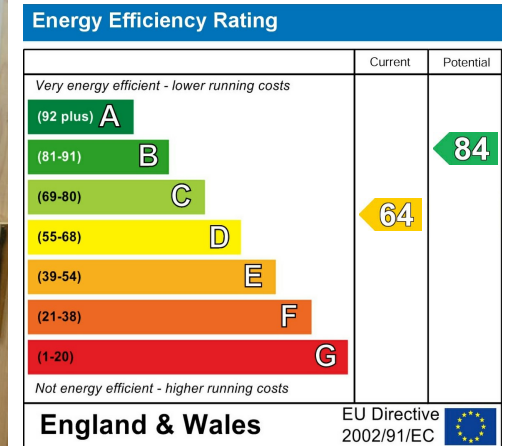
 2  1  1  D

VIDEO TOUR AVAILABLE A delightful and well- presented, TWO DOUBLE BEDROOM, end of terraced property. Situated on a quiet and leafy residential road here in Fallowfield located off Platt Lane. Within a short stroll from Wilmslow Road with its array of independent shops, popular bars and restaurants. Platt Fields Park is nearby and popular transport links connecting you to the city centre, Withington village and Manchester International Airport. In brief this well planned and spacious accommodation consist; An entrance hall, a good-sized lounge to the front aspect complete, with original feature fireplace, a large fitted kitchen/ diner which leads through to a useful utility room where you can gain access into the rear enclosed courtyard. To the first floor there is a landing leading two good sized double bedrooms and a three-piece white shower room, completing this delightful home. The property benefits from gas fired central heating, high ceilings, picture railings, original features and a rear enclosed courtyard style walled garden.



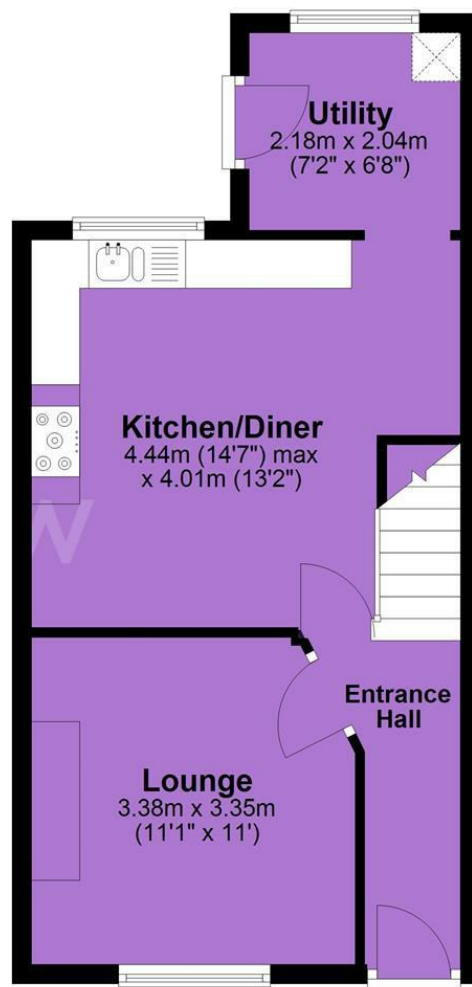


EPC Chart

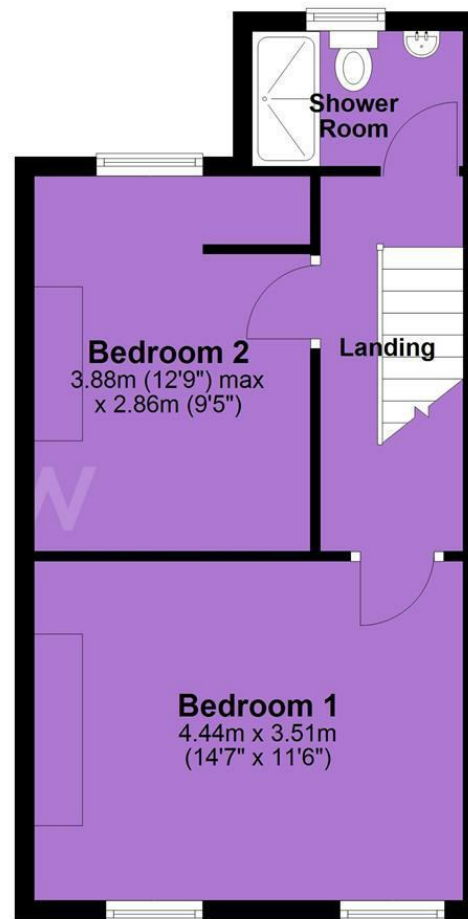


Tenure: **Freehold** Council Tax Band: **A**

Ground Floor



First Floor



JP & Brimelow Estate Agents Ltd
430 Barlow Moor Road, Manchester, M21 8AD
Tel: 0161 8822233
E: sales@jpbrimelow.co.uk www.jpandbrimelow.co.uk



JP & Brimelow
ESTATE AGENTS

NOTICE: JP & Brimelow Estate Agents Ltd for themselves and for the vendors or lessors of this property whose agents they are give notice that:

- (i) the particulars are set out as a general outline only for the guidance of intending purchasers or lessees, and do not constitute, nor constitute part of, an offer or contract;
- (ii) all descriptions, dimensions, references to the condition and necessary permissions for use and occupation, and other details are given in good faith and are believed to be correct but any intending purchasers or tenants should not rely on them as statements or representations of fact but must satisfy themselves by inspection or otherwise as to the correctness of each of them;
- (iii) no person in the employment of JP & Brimelow Estate Agents Ltd has any authority to make or give any representation or warranty whatever in relation to this property.

jpandbrimelowestateagents

@jpandbrimelow