

67 Victoria Road, Fallowfield, Manchester, M14 6BW



JP&Brimelow
ESTATE AGENTS



 3  1  2  C

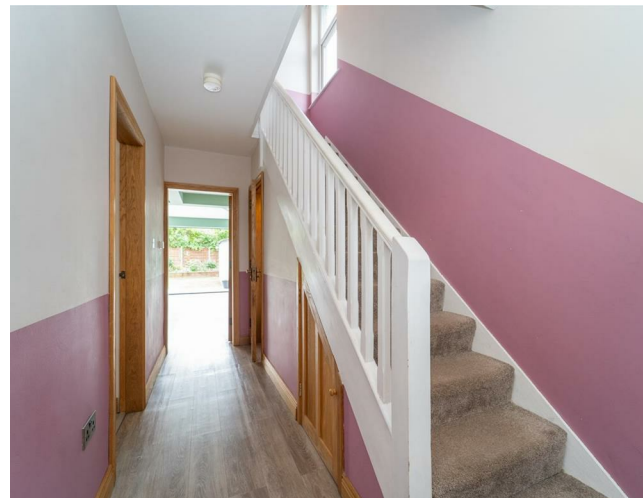
VIDEO TOUR AVAILABLE A well-presented and extended THREE BEDROOM, traditional semi-detached property. Situated in a central position off Wellington Road in Fallowfield.

Close by to Withington and local amenities including Sainsbury's supermarket, bars and restaurants. The property is close to fantastic transport links with bus routes into Manchester City centre, Northenden and Didsbury.

The well-planned accommodation consists of an entrance hallway with a downstairs W.C. A lounge with a bay window to the front aspect and an impressive large open plan kitchen/dining room with bi-fold doors leading out into the rear enclosed garden, completing the ground floor.


To the first floor, the landing reveals three good sized bedrooms and a three-piece family bathroom. The property also benefits from a driveway providing off road parking for multiple vehicles, a good size enclosed rear garden and gas fired central heating and underfloor heating throughout the ground floor.

£375,000





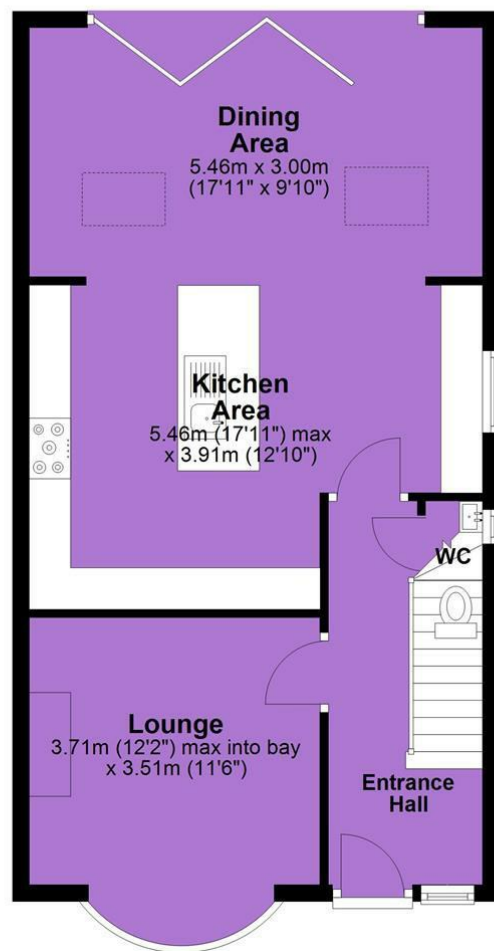
EPC Chart

Energy Efficiency Rating		
	Current	Potential
Very energy efficient - lower running costs		
(92 plus) A		
(81-91) B		
(69-80) C	70	81
(55-68) D		
(39-54) E		
(21-38) F		
(1-20) G		
Not energy efficient - higher running costs		
England & Wales	EU Directive 2002/91/EC 	

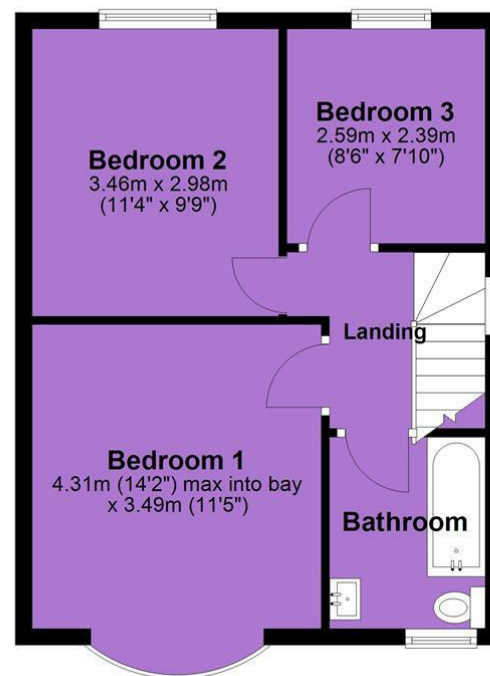


Tenure: Freehold Council Tax Band: C

Ground Floor



First Floor



JP & Brimelow Estate Agents Ltd
430 Barlow Moor Road, Manchester, M21 8AD
Tel: 0161 8822233

E: sales@jpbrimelow.co.uk www.jpandbrimelow.co.uk



JP & Brimelow
ESTATE AGENTS

NOTICE: JP & Brimelow Estate Agents Ltd for themselves and for the vendors or lessors of this property whose agents they are give notice that:

- (i) the particulars are set out as a general outline only for the guidance of intending purchasers or lessees, and do not constitute, nor constitute part of, an offer or contract;
- (ii) all descriptions, dimensions, references to the condition and necessary permissions for use and occupation, and other details are given in good faith and are believed to be correct but any intending purchasers or tenants should not rely on them as statements or representations of fact but must satisfy themselves by inspection or otherwise as to the correctness of each of them;
- (iii) no person in the employment of JP & Brimelow Estate Agents Ltd has any authority to make or give any representation or warranty whatever in relation to this property.

jpandbrimelowestateagents

@jpandbrimelow

