

18 Higson Avenue, Chorlton Green, Manchester, M21 9FW

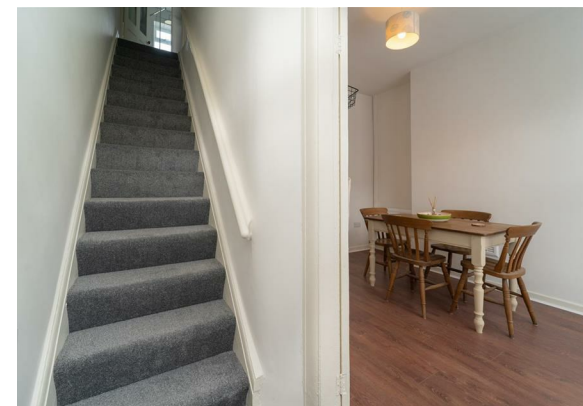


JP&Brimelow
ESTATE AGENTS

Offers In The Region Of £395,000

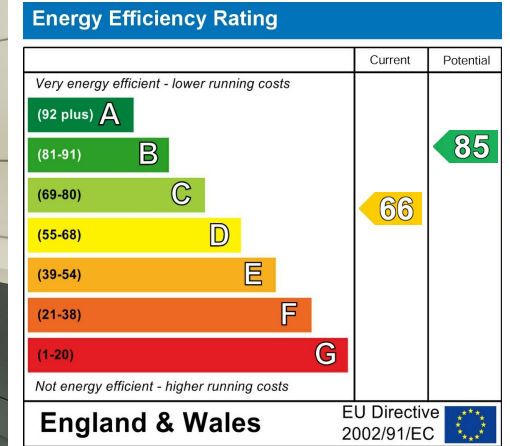
 2  1  1  D

VIDEO TOUR AVAILABLE An attractive and well-presented, TWO DOUBLE BEDROOM, garden fronted, period, mid terrace property situated in the heart of Chorlton Green off Beech Road. Within easy walking distance to all the independent shops/bars/restaurants on Beech Road. Chorlton Nature Reserve and several fantastic primary schools nearby. Located close by to fantastic transport links on Barlow Moor Road giving direct access into Manchester city centre. In brief, this stylishly presented accommodation comprises; An entrance hall leading to a dining area with a bay window to the front aspect, a lounge, useful under stairs storage and a fully fitted kitchen with access out into the rear enclosed courtyard. To the first-floor the landing reveals two double bedrooms and a modern white three-piece family shower room complete with walk in shower and high-end fixtures and fittings. The property benefits from gas fired central heating, high ceilings throughout, a rear enclosed courtyard and has recently undergone a refurbishment, including; a complete re wire, new heating system, new flooring and has been replastered throughout.



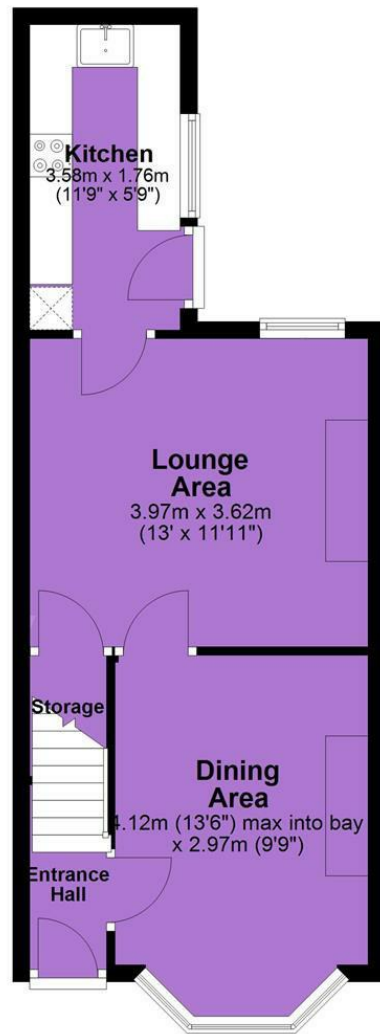


EPC Chart

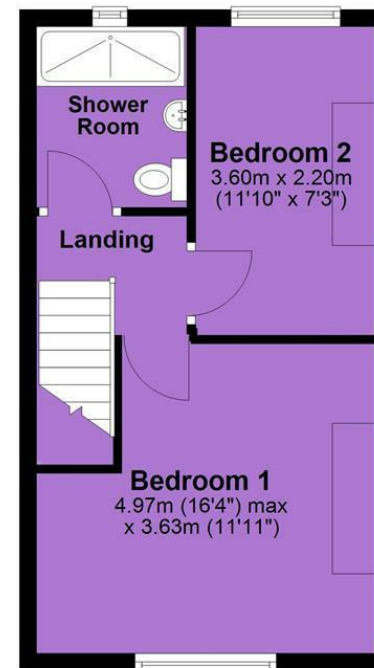


Tenure: **Freehold** Council Tax Band: **B**

Ground Floor



First Floor



JP & Brimelow Estate Agents Ltd
430 Barlow Moor Road, Manchester, M21 8AD
Tel: 0161 8822233

E: sales@jpbrimelow.co.uk www.jpandbrimelow.co.uk



JP & Brimelow
ESTATE AGENTS

NOTICE: JP & Brimelow Estate Agents Ltd for themselves and for the vendors or lessors of this property whose agents they are give notice that:

- (i) the particulars are set out as a general outline only for the guidance of intending purchasers or lessees, and do not constitute, nor constitute part of, an offer or contract;
- (ii) all descriptions, dimensions, references to the condition and necessary permissions for use and occupation, and other details are given in good faith and are believed to be correct but any intending purchasers or tenants should not rely on them as statements or representations of fact but must satisfy themselves by inspection or otherwise as to the correctness of each of them;
- (iii) no person in the employment of JP & Brimelow Estate Agents Ltd has any authority to make or give any representation or warranty whatever in relation to this property.

@jpandbrimelowstateagents

@jpandbrimelow