

# Flat 9, Tealby Court, Chorlton, Manchester, M21 0XB

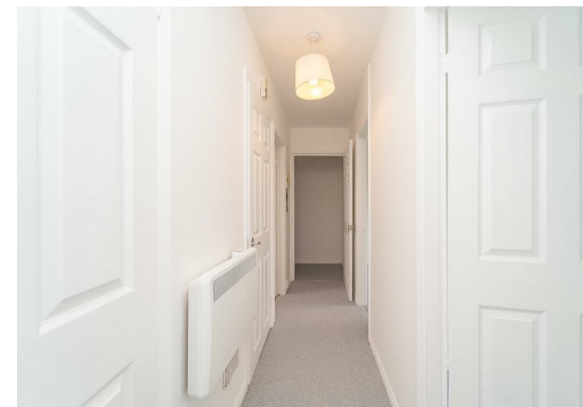


**JP&Brimelow**  
ESTATE AGENTS

# Offers In The Region Of £210,000

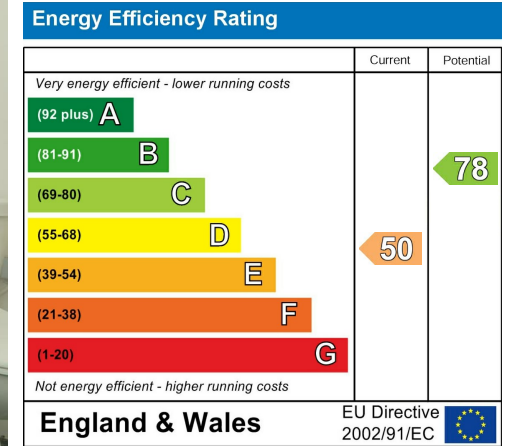
 2  1  1  E

\*\*\*VIDEO TOUR AVAILABLE\*\*\* A delightful, TWO BEDROOM, second floor apartment. apartment situated in this highly popular purpose-built development on Wilbraham Road here in Chorlton. It is located in a fantastic position. Just a short walk of both St Werburgh's and Chorlton Metrolink Stations, giving you access into the city centre, Media City and Manchester International Airport. Close by to the centre of Chorlton with all its independent shops, local amenities and transport links. The apartment is well planned and consists of a communal entrance hallway with stairs leading to all floors, a private entrance hall with storage cupboards, a three-piece bathroom, a modern fitted kitchen, a spacious through lounge/dining area and two well-proportioned bedrooms. The apartment benefits from; Electric storage heating, secure off-road parking, a GARAGE and well maintained communal lawned gardens. OFFERED WITH NO VENDOR CHAIN.



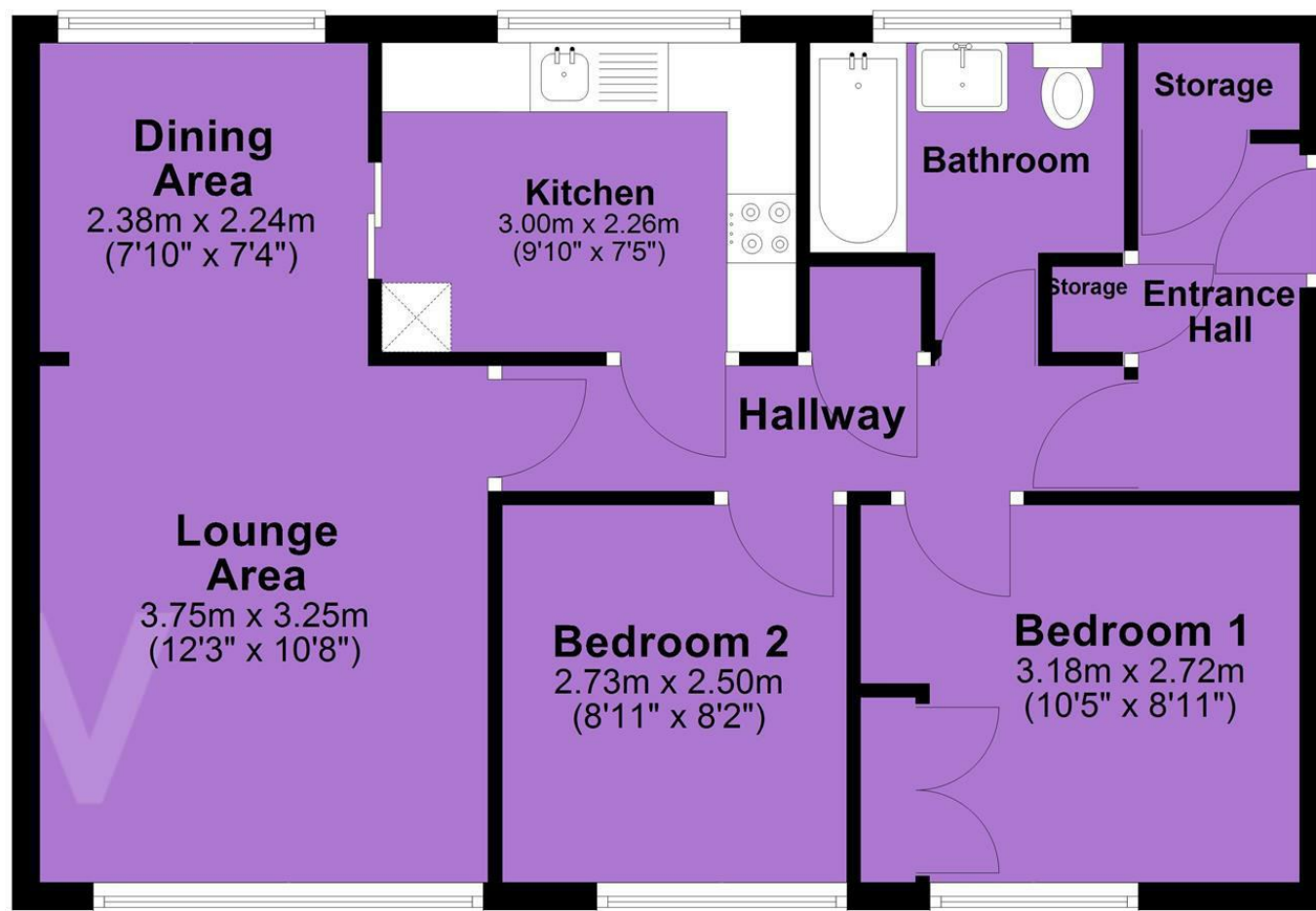


## EPC Chart



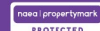
Tenure: **Leasehold** Council Tax Band: **B**

## Second Floor



JP & Brimelow Estate Agents Ltd  
430 Barlow Moor Road, Manchester, M21 8AD  
Tel: 0161 8822233

E: sales@jpbrimelow.co.uk www.jpandbrimelow.co.uk



**JP & Brimelow**  
ESTATE AGENTS

NOTICE: JP & Brimelow Estate Agents Ltd for themselves and for the vendors or lessors of this property whose agents they are give notice that:

- (i) the particulars are set out as a general outline only for the guidance of intending purchasers or lessees, and do not constitute, nor constitute part of, an offer or contract;
- (ii) all descriptions, dimensions, references to the condition and necessary permissions for use and occupation, and other details are given in good faith and are believed to be correct but any intending purchasers or tenants should not rely on them as statements or representations of fact but must satisfy themselves by inspection or otherwise as to the correctness of each of them;
- (iii) no person in the employment of JP & Brimelow Estate Agents Ltd has any authority to make or give any representation or warranty whatever in relation to this property.

jpandbrimelowstateagents

@jpandbrimelow