

7 Whitehead Road, Chorlton Green, Manchester, M21 9HA



**JP&Brimelow**  
ESTATE AGENTS





4 2 2 C

**\*\*\*VIDEO TOUR AVAILABLE\*\*\*** A truly stunning & extended FOUR BEDROOM, semi-detached property. Situated in a prime location in Chorlton Green, off Hackness Road.

Within walking distance to the vibrant Beech Road here in Chorlton Green, close to all local amenities including independent restaurants/deli's/shops and either Chorlton Park or Beech Road Park. The Metrolink station on either St Werburghs Road in Chorlton or Edge Lane in Stretford giving you direct access to the city centre, Media City at Salford Quays and Manchester International Airport.

This well planned and spacious accommodation is set over three floors and comprises of; An entrance porch, an entrance hallway complete with decorative tiled flooring and an under stairs W.C. A good-sized family room with bay window sits to the front aspect.

The highlight of this home is the impressive open plan kitchen/ diner, complete with an attractive and uniquely designed fully fitted kitchen, a utility room, a dining and living space all complete with tiled flooring and bi- fold doors which seamlessly allow access out into the rear enclosed garden.

To the first-floor the landing reveals two double bedrooms, a further bedroom and a modern white three-piece bathroom.

The second floor accommodates a beautiful principal bedroom with a fabulous Juliet balcony providing tree top views over the impressive rear garden, a stylish en-suite shower room complete with quality fixtures completes this charming family home.

The property benefits from gas fired central heating, high ceilings throughout, a driveway providing off road parking, a useful garage and a rear enclosed garden.

£750,000

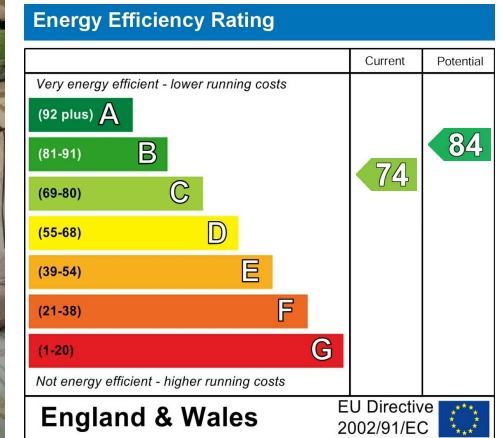






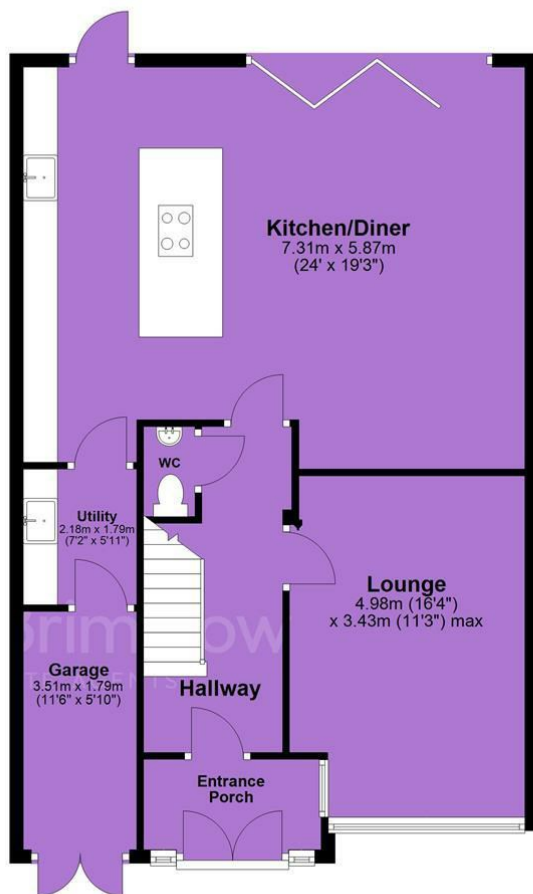


## EPC Chart

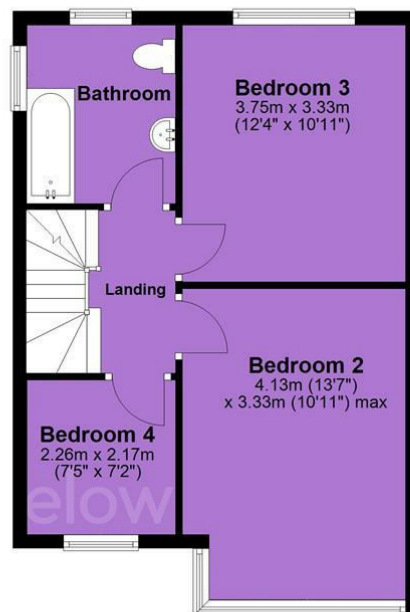


Tenure: Freehold Council Tax Band:

## Ground Floor



## First Floor



## Second Floor



JP & Brimelow Estate Agents Ltd  
430 Barlow Moor Road, Manchester, M21 8AD  
Tel: 0161 8822233

E: sales@jpbrimelow.co.uk www.jpandbrimelow.co.uk



**JP & Brimelow**  
ESTATE AGENTS

NOTICE: JP & Brimelow Estate Agents Ltd for themselves and for the vendors or lessors of this property whose agents they are give notice that:

- (i) the particulars are set out as a general outline only for the guidance of intending purchasers or lessees, and do not constitute, nor constitute part of, an offer or contract;
- (ii) all descriptions, dimensions, references to the condition and necessary permissions for use and occupation, and other details are given in good faith and are believed to be correct but any intending purchasers or tenants should not rely on them as statements or representations of fact but must satisfy themselves by inspection or otherwise as to the correctness of each of them;
- (iii) no person in the employment of JP & Brimelow Estate Agents Ltd has any authority to make or give any representation or warranty whatever in relation to this property.

jpandbrimelowestateagents

@jpandbrimelow



