

21 Langley Road, Fallowfield, Manchester, M14 6LL



JP&Brimelow
ESTATE AGENTS

Offers In The Region Of £300,000

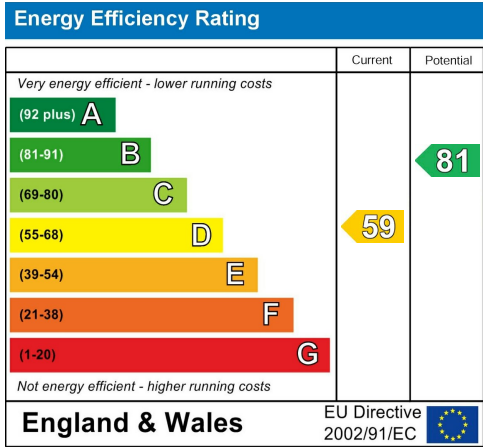
 3  2  2  D

****VIDEO TOUR AVAILABLE**** A lovely THREE DOUBLE BEDROOM mid-terrace property situated in a central Fallowfield location on Langley Road, off Wilmslow Road. Close to amazing transport links to both Manchester City centre and Manchester airport. The well-planned accommodation consists of an entrance hallway, an open plan lounge/dining room, a fitted kitchen and a downstairs three-piece shower room. To the first floor there are three double bedrooms and a further three-piece shower room. The property benefits from period features such as cast-iron fireplaces and picture railing, as well as both front and rear enclosed gardens.



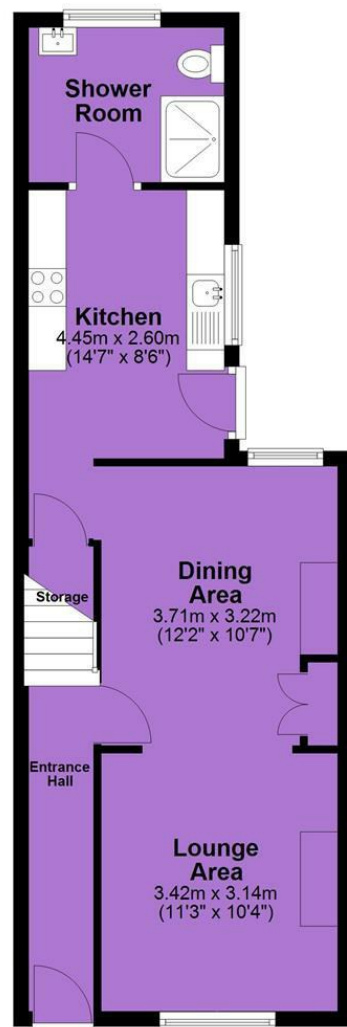


EPC Chart

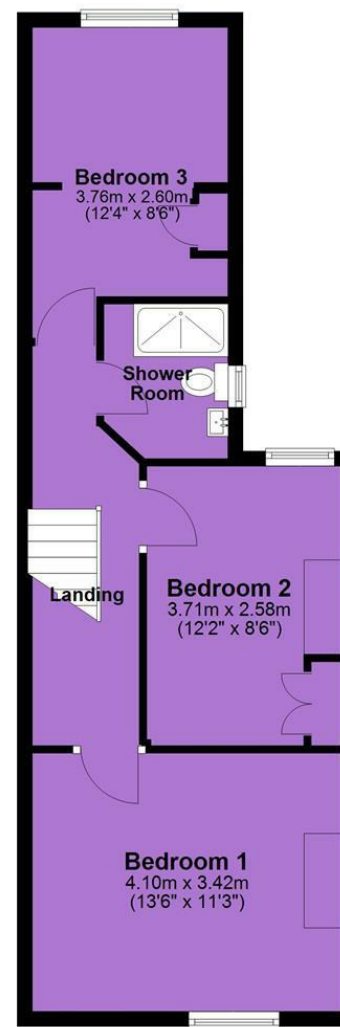


Tenure: **Freehold** Council Tax Band: **B**

Ground Floor



First Floor



JP & Brimelow Estate Agents Ltd
430 Barlow Moor Road, Manchester, M21 8AD
Tel: 0161 8822233
E: sales@jpbrimelow.co.uk www.jpandbrimelow.co.uk



JP & Brimelow
ESTATE AGENTS

NOTICE: JP & Brimelow Estate Agents Ltd for themselves and for the vendors or lessors of this property whose agents they are give notice that:

- (i) the particulars are set out as a general outline only for the guidance of intending purchasers or lessees, and do not constitute, nor constitute part of, an offer or contract;
- (ii) all descriptions, dimensions, references to the condition and necessary permissions for use and occupation, and other details are given in good faith and are believed to be correct but any intending purchasers or tenants should not rely on them as statements or representations of fact but must satisfy themselves by inspection or otherwise as to the correctness of each of them;
- (iii) no person in the employment of JP & Brimelow Estate Agents Ltd has any authority to make or give any representation or warranty whatever in relation to this property.

jpandbrimelowstateagents

@jpandbrimelow