

12 Dagnall Avenue, Chorlton, Manchester, M21 8EZ



**JP&Brimelow**  
ESTATE AGENTS

# Offers In The Region Of £350,000

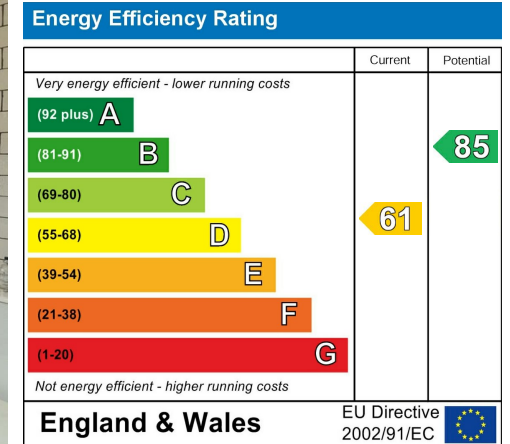
 3  1  1  D

\*\*\*VIDEO TOUR AVAILABLE\*\*\* A Delightful and well presented, THREE DOUBLE BEDROOM, traditional mid- terrace property. Positioned on a highly popular residential avenue off Hardy Lane here in Chorlton, with Chorlton Water Park, Chorlton Park, and Chorlton Golf Club all on your doorstep. It is centrally located for transport links into either the City Centre, Media City, and Manchester International Airport by either the Metrolink or bus route on Barlow Moor Road. The location is fantastic for both West Didsbury and Chorlton amenities and local primary schools. In brief the spacious accommodation consists of; An entrance hall, a good-sized lounge to the front aspect with stripped and varnished floor boards and a feature fireplace, a fitted kitchen with views out into the rear garden, a useful storage area and utility area with access out into the rear enclosed garden completes this floor. To the first floor the landing leads to three double bedrooms and a modern white three-piece bathroom suite. The property benefits from gas fired central heating, stripped and varnished floor boards, a rear enclosed garden and a drive way providing off road parking.



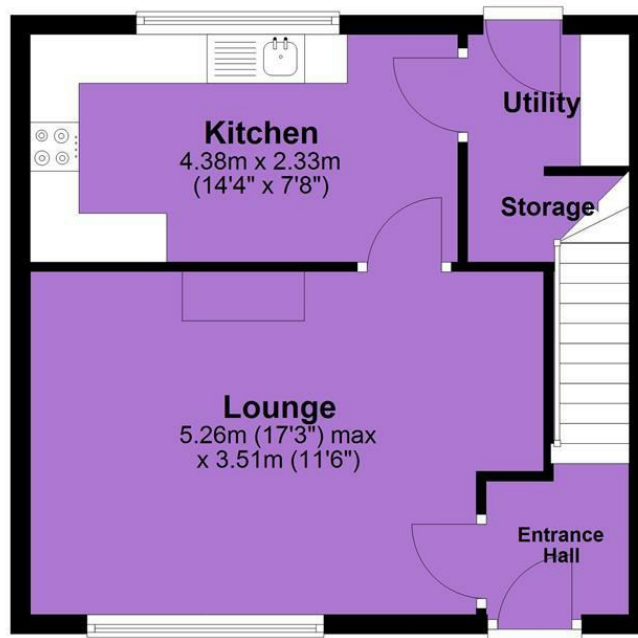


## EPC Chart

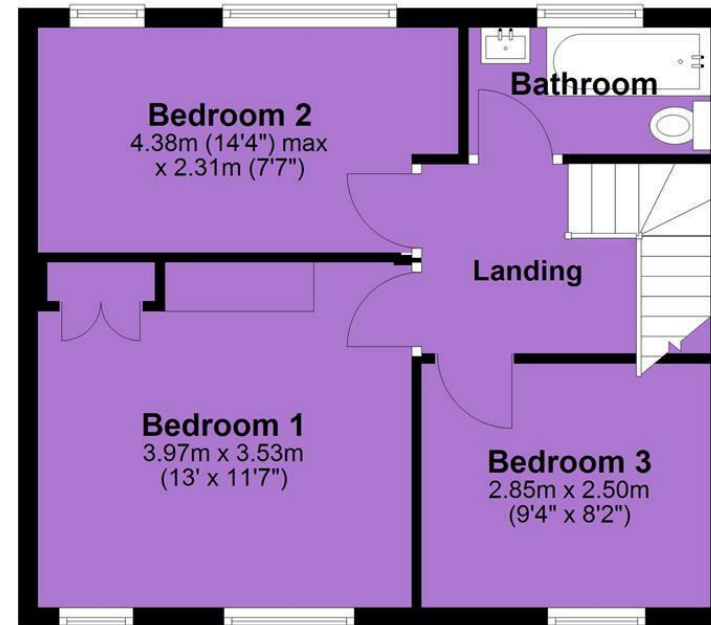


Tenure: **Freehold** Council Tax Band: **A**

## Ground Floor



## First Floor



JP & Brimelow Estate Agents Ltd  
430 Barlow Moor Road, Manchester, M21 8AD  
Tel: 0161 8822233

E: sales@jpbrimelow.co.uk www.jpandbrimelow.co.uk



**JP & Brimelow**  
ESTATE AGENTS

NOTICE: JP & Brimelow Estate Agents Ltd for themselves and for the vendors or lessors of this property whose agents they are give notice that:

- (i) the particulars are set out as a general outline only for the guidance of intending purchasers or lessees, and do not constitute, nor constitute part of, an offer or contract;
- (ii) all descriptions, dimensions, references to the condition and necessary permissions for use and occupation, and other details are given in good faith and are believed to be correct but any intending purchasers or tenants should not rely on them as statements or representations of fact but must satisfy themselves by inspection or otherwise as to the correctness of each of them;
- (iii) no person in the employment of JP & Brimelow Estate Agents Ltd has any authority to make or give any representation or warranty whatever in relation to this property.

jpandbrimelowestateagents

@jpandbrimelow