

19 Littler Avenue, Chorlton, Manchester, M21 7WA



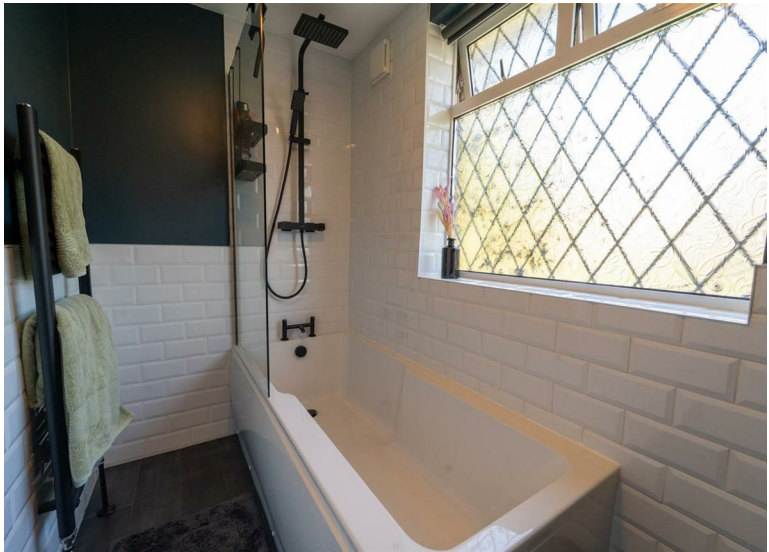
JP&Brimelow
ESTATE AGENTS

Offers In The Region Of £335,000

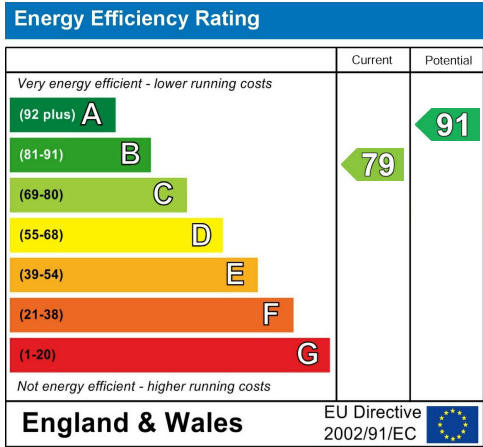
3 1 2 C

****VIDEO TOUR AVAILABLE**** A stylishly presented THREE BEDROOM, mid-terrace home. Ideally situated at the end of a quiet cul-de-sac in a highly sought-after residential area, just off Floyd Avenue in Chorlton. With both Chorlton Water Park and Chorlton Park on your doorstep. This property boasts a central location with excellent transport links to the City Centre and Manchester International Airport via nearby bus routes or the Metrolink on Mauldeth Road West. It's perfectly positioned for easy access to the vibrant amenities of both West Didsbury and Chorlton, well-regarded local primary schools, Chorlton Golf Club, green open spaces, and the motorway network. In brief the well-planned accommodation consists of a porch, an entrance hallway, a lounge to the front aspect, a modern fitted kitchen/dining room with views into the rear enclosed lawned garden and a downstairs W.C., completing the ground floor. To the first floor there is a landing leading to three good sized bedrooms and a three-piece bathroom. The property benefits from a useful driveway, providing off road parking to the front aspect, solar panels and an enclosed lawned garden with a private patio area. Warmed by gas fired central heating and would suit a professional couple or first-time buyer and early viewing is highly recommended.





EPC Chart

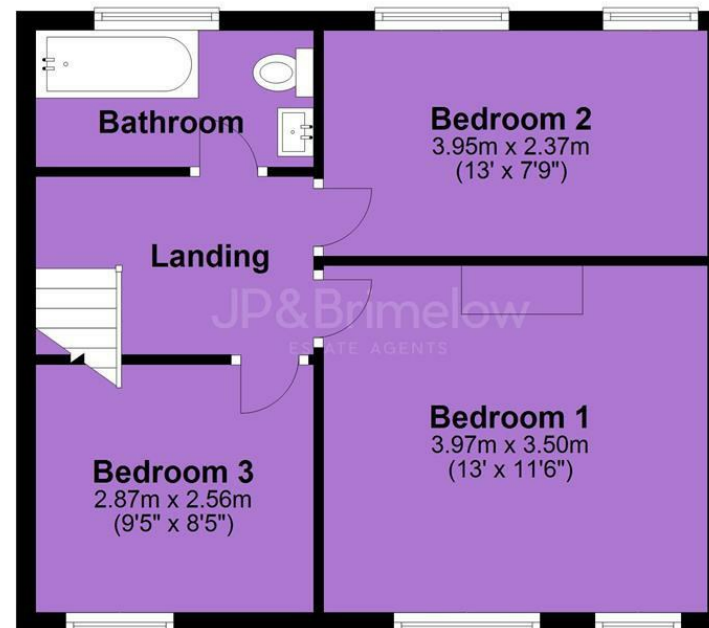


Tenure: **Freehold** Council Tax Band: **A**

Ground Floor



First Floor



JP & Brimelow Estate Agents Ltd
430 Barlow Moor Road, Manchester, M21 8AD
Tel: 0161 8822233
E: sales@jpbrimelow.co.uk www.jpandbrimelow.co.uk



JP & Brimelow
ESTATE AGENTS

NOTICE: JP & Brimelow Estate Agents Ltd for themselves and for the vendors or lessors of this property whose agents they are give notice that:

- (i) the particulars are set out as a general outline only for the guidance of intending purchasers or lessees, and do not constitute, nor constitute part of, an offer or contract;
- (ii) all descriptions, dimensions, references to the condition and necessary permissions for use and occupation, and other details are given in good faith and are believed to be correct but any intending purchasers or tenants should not rely on them as statements or representations of fact but must satisfy themselves by inspection or otherwise as to the correctness of each of them;
- (iii) no person in the employment of JP & Brimelow Estate Agents Ltd has any authority to make or give any representation or warranty whatever in relation to this property.

jpandbrimelowestateagents

@jpandbrimelow