

101 Ivygreen Road, Chorlton Green, Manchester, M21 9FX

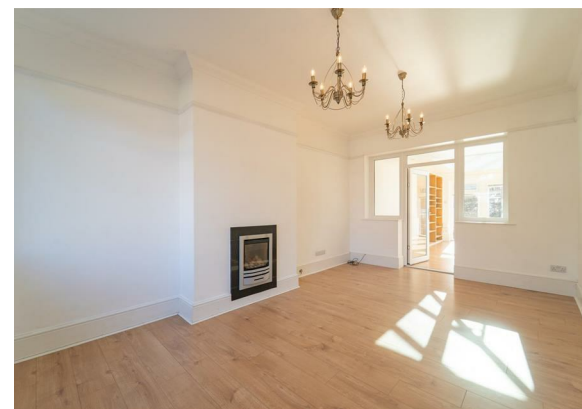


JP&Brimelow
ESTATE AGENTS

Offers In The Region Of £475,000

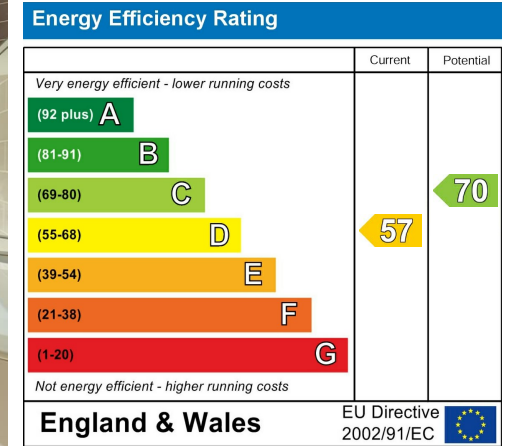
 3  1  2  D

VIDEO TOUR AVAILABLE An attractive & beautifully finished, THREE BEDROOM mid terraced property. Located on a highly regarded residential road in Chorlton Green. Within easy walking distance of the independent shops, bars and restaurants available on Beech Road, Chorlton Nature Reserve and both Brookburn and Chorlton C of E primary schools are nearby. The spacious and bright accommodation comprises of: An entrance hallway, a fitted kitchen with a solid oak worktops, lounge/dining room with a fireplace and access into the extended family room/orangery leading out into the rear large and impressive South facing garden. To the first floor, a landing leads to three bedrooms and a wet room. Additional features include gas central heating and a driveway providing off road parking and a South facing enclosed lawned garden to the rear with a new timber storage shed. OFFERED WITH NO VENDOR CHAIN. Ideal for a professional couple or family due to the location.



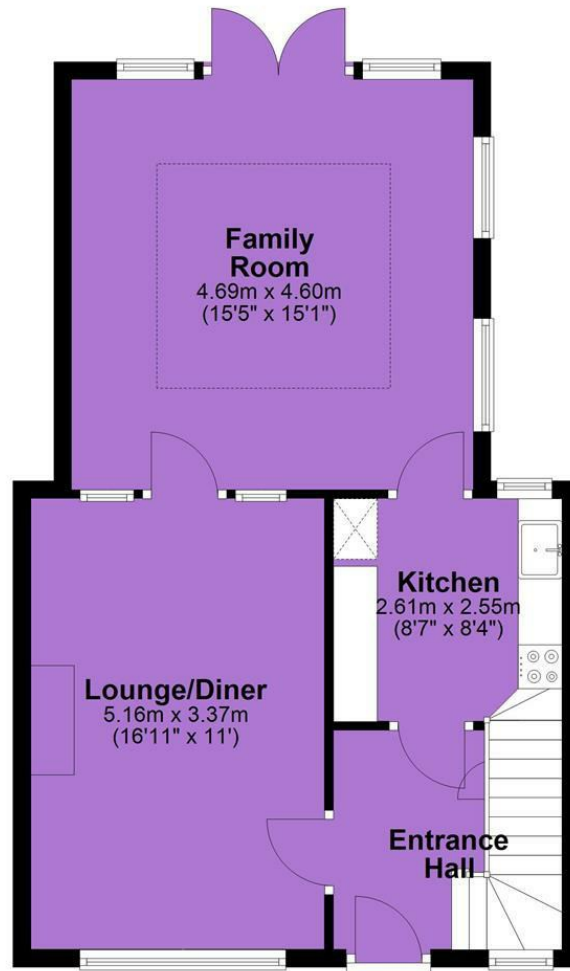


EPC Chart



Tenure: **Freehold** Council Tax Band: **B**

Ground Floor



First Floor



JP & Brimelow Estate Agents Ltd
430 Barlow Moor Road, Manchester, M21 8AD
Tel: 0161 8822233

E: sales@jpbrimelow.co.uk www.jpandbrimelow.co.uk



JP & Brimelow
ESTATE AGENTS

NOTICE: JP & Brimelow Estate Agents Ltd for themselves and for the vendors or lessors of this property whose agents they are give notice that:

- (i) the particulars are set out as a general outline only for the guidance of intending purchasers or lessees, and do not constitute, nor constitute part of, an offer or contract;
- (ii) all descriptions, dimensions, references to the condition and necessary permissions for use and occupation, and other details are given in good faith and are believed to be correct but any intending purchasers or tenants should not rely on them as statements or representations of fact but must satisfy themselves by inspection or otherwise as to the correctness of each of them;
- (iii) no person in the employment of JP & Brimelow Estate Agents Ltd has any authority to make or give any representation or warranty whatever in relation to this property.

jpandbrimelowestateagents

@jpandbrimelow