

9 Brookburn Road, Chorlton Green, Manchester, M21 8FF



JP&Brimelow
ESTATE AGENTS



3 1 2 D

VIDEO TOUR AVAILABLE An attractive and deceptively spacious, THREE BEDROOM, PLUS LOFT ROOM, fabulous semi-detached property with accommodation spread over three floors.

The property has been thoughtfully designed, perfectly situated in the heart of Chorlton Green and nearby to Beech Road with its boutique shops, popular bars and independent restaurants. With Chorlton Nature Reserve and Brookburn Primary School opposite, the location is a prime one for a family or professional couple.

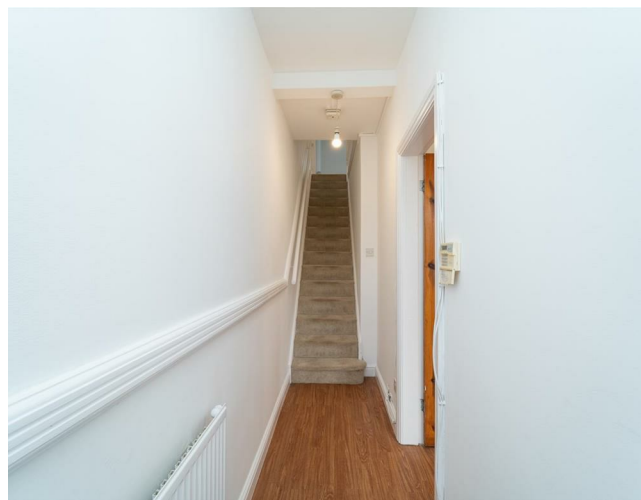
The well-planned accommodation consists of an entrance hall, a downstairs W.C, a family room with a bay window to the front aspect, through to a lounge which benefits from a Morso wood burner and an impressive fully fitted kitchen complete with integrated fridge freezer and washing machine, a dining room to the rear with Velux windows and access out into the private enclosed decked garden.

On the first floor, a landing provides access to two double bedrooms, a single bedroom and a four-piece family bathroom. The second-floor landing leads to an additional storage space/loft room.

The property benefits from gas fired central heating, beautiful stained glass windows, a secure rear enclosed garden and shared off road parking. Internal inspection is highly recommended to appreciate this home.


OFFERED WITH NO VENDOR CHAIN.

£595,000





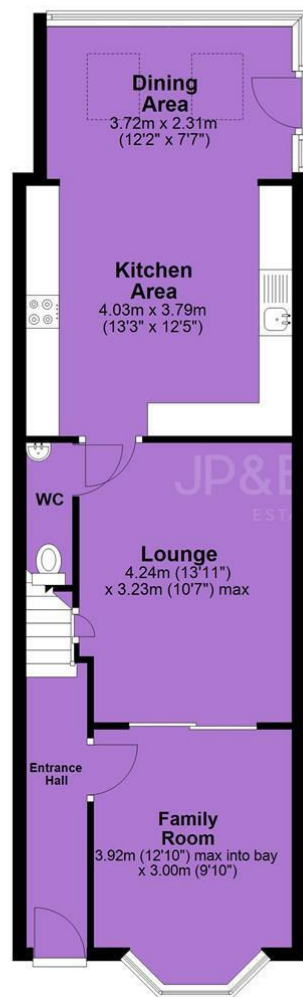
EPC Chart

Energy Efficiency Rating		
	Current	Potential
Very energy efficient - lower running costs		
(92 plus) A		
(81-91) B		80
(69-80) C		
(55-68) D	60	
(39-54) E		
(21-38) F		
(1-20) G		
Not energy efficient - higher running costs		
England & Wales		EU Directive 2002/91/EC 

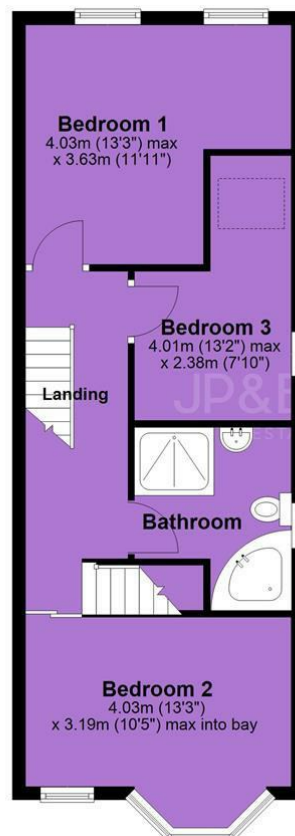


Tenure: Freehold Council Tax Band: C

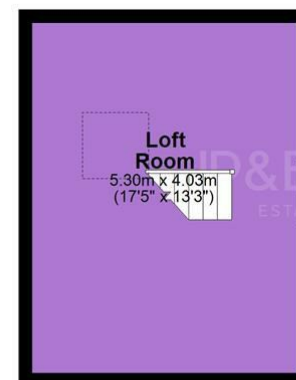
Ground Floor



First Floor



Second Floor



JP & Brimelow Estate Agents Ltd
430 Barlow Moor Road, Manchester, M21 8AD
Tel: 0161 8822233

E: sales@jpbrimelow.co.uk www.jpandbrimelow.co.uk



JP & Brimelow
ESTATE AGENTS

NOTICE: JP & Brimelow Estate Agents Ltd for themselves and for the vendors or lessors of this property whose agents they are give notice that:

- (i) the particulars are set out as a general outline only for the guidance of intending purchasers or lessees, and do not constitute, nor constitute part of, an offer or contract;
- (ii) all descriptions, dimensions, references to the condition and necessary permissions for use and occupation, and other details are given in good faith and are believed to be correct but any intending purchasers or tenants should not rely on them as statements or representations of fact but must satisfy themselves by inspection or otherwise as to the correctness of each of them;
- (iii) no person in the employment of JP & Brimelow Estate Agents Ltd has any authority to make or give any representation or warranty whatever in relation to this property.

jpandbrimelowestateagents

@jpandbrimelow

