

57 Whalley Road, Whalley Range, Manchester, M16 8AF



**JP&Brimelow**  
ESTATE AGENTS



# Offers In The Region Of £365,000

4 2 2 D

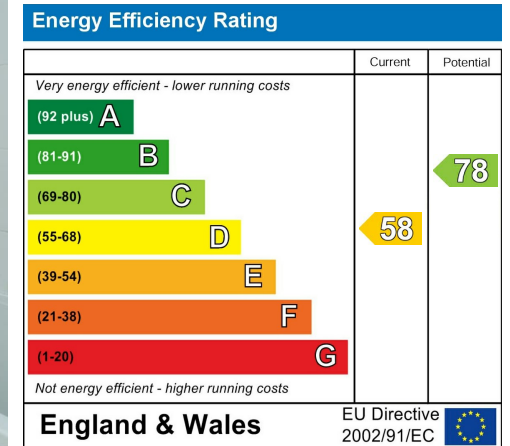
\*\*\*VIDEO TOUR AVAILABLE\*\*\* An attractive and spacious FOUR BEDROOM, bay fronted period mid-terraced property arranged over 3 floors. Located on a leafy highly regarded road off Wood Road in the conservation area of Whalley Range. The excellent Alexandra Park is nearby and the cafes and bars for which Chorlton is loved by so many on Manchester Road are a five-minute drive away. A selection of primary schools close by on College Road and transport links on both Upper Chorlton Road or Alexandra Road South, connecting you to the city centre. Entry is at ground level, entrance hallway, a family room with a bay window to the front aspect, a lounge/dining room to the rear, a fitted kitchen with access out into the rear courtyard style garden and a downstairs shower room completes the ground floor. Whilst to the first floor there is a landing leading to three generously proportioned bedrooms, a three-piece bathroom suite. To the second floor reveals a landing leading to an impressive double bedroom with storage space. The property benefits from an alarm system, warmed by a combi boiler providing gas fired central heating, high ceilings throughout, a large lawned front garden and a rear enclosed courtyard style garden. A fantastic opportunity to acquire a substantial period property with excellent potential. FREEHOLD. OFFERED WITH NO VENDOR CHAIN.





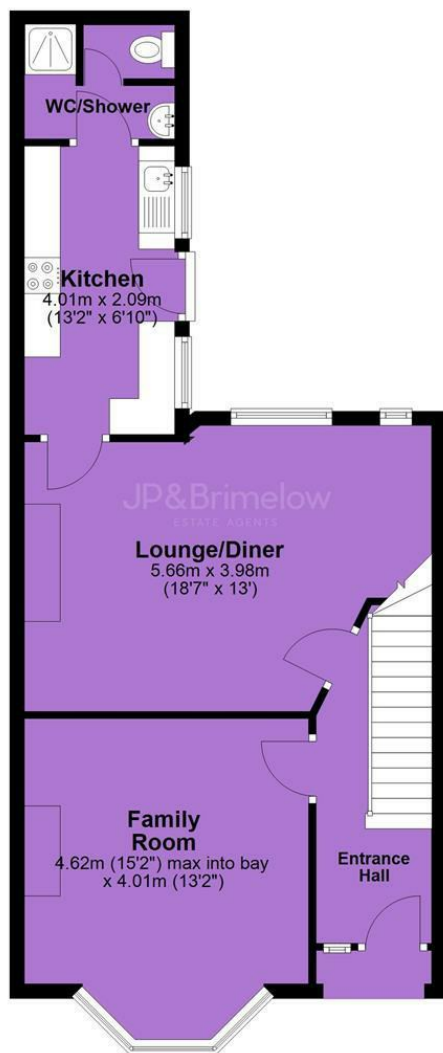


## EPC Chart

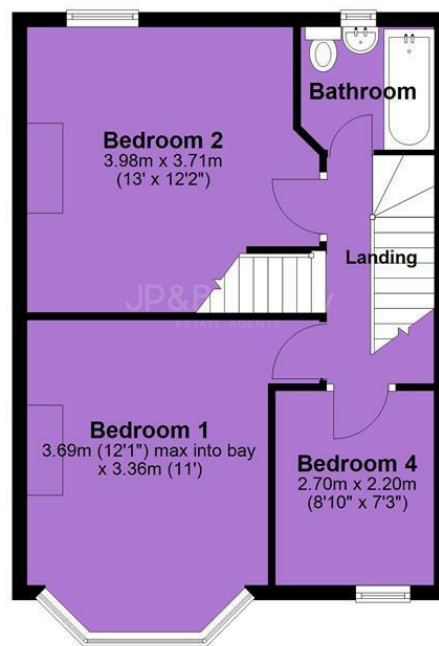


Tenure: **Freehold** Council Tax Band: **B**

## Ground Floor



## First Floor



## Second Floor



JP & Brimelow Estate Agents Ltd  
430 Barlow Moor Road, Manchester, M21 8AD  
Tel: 0161 8822233

E: sales@jpbrimelow.co.uk www.jpandbrimelow.co.uk



**JP & Brimelow**  
ESTATE AGENTS

NOTICE: JP & Brimelow Estate Agents Ltd for themselves and for the vendors or lessors of this property whose agents they are give notice that:

- (i) the particulars are set out as a general outline only for the guidance of intending purchasers or lessees, and do not constitute, nor constitute part of, an offer or contract;
- (ii) all descriptions, dimensions, references to the condition and necessary permissions for use and occupation, and other details are given in good faith and are believed to be correct but any intending purchasers or tenants should not rely on them as statements or representations of fact but must satisfy themselves by inspection or otherwise as to the correctness of each of them;
- (iii) no person in the employment of JP & Brimelow Estate Agents Ltd has any authority to make or give any representation or warranty whatever in relation to this property.

jpandbrimelowstateagents

@jpandbrimelow