

148 Cowesby Street, Moss Side, Manchester, M14 4UW



JP&Brimelow
ESTATE AGENTS

Offers In The Region Of £210,000

🛏 2 🚿 1 🛋 1 ≡ C

VIDEO TOUR AVAILABLE A delightful and well presented, TWO BEDROOM, period, mid terrace property in the heart of Moss Side positioned off Claremont Road. Located within walking distance to convenient stores, independent shops and Alexandra Road Park being a five-minute walk with open green space to enjoy. The property in brief consists of; an entrance hall, a spacious through lounge/dining area, a useful storage cupboard, a modern fitted kitchen with access out into the rear courtyard. Whilst to the first floor the landing reveals two double bedrooms and a four-piece bathroom suite. The property benefits from gas fired central heating and a rear enclosed courtyard. Alexandra Park is at the top of the road providing open green space for running, walking and cycling. OFFERED WITH NO VENDOR CHAIN.





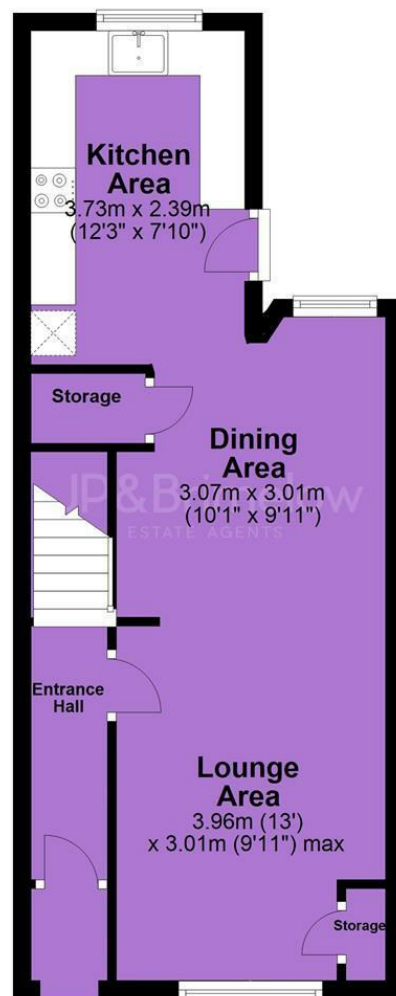
EPC Chart

Energy Efficiency Rating		
	Current	Potential
Very energy efficient - lower running costs		99
(92 plus) A		
(81-91) B	73	
(69-80) C		
(55-68) D		
(39-54) E		
(21-38) F		
(1-20) G		
Not energy efficient - higher running costs		
England & Wales		EU Directive 2002/91/EC

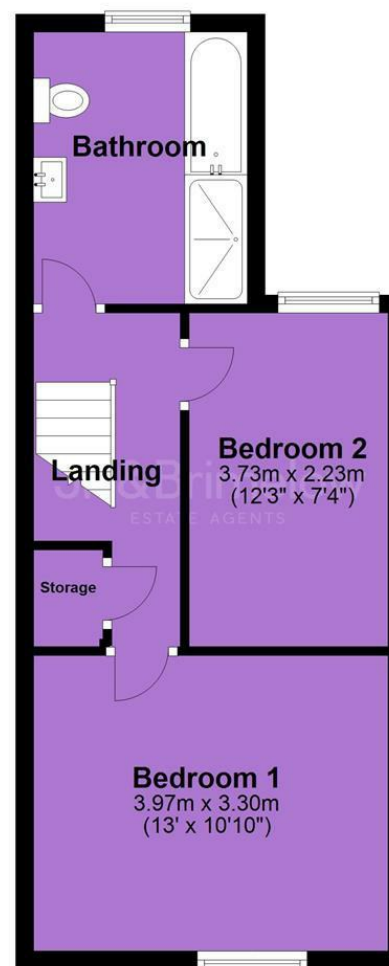


Tenure: **Freehold** Council Tax Band: **A**

Ground Floor



First Floor



JP & Brimelow Estate Agents Ltd
430 Barlow Moor Road, Manchester, M21 8AD
Tel: 0161 8822233
E: sales@jpbrimelow.co.uk www.jpandbrimelow.co.uk



JP & Brimelow
ESTATE AGENTS

NOTICE: JP & Brimelow Estate Agents Ltd for themselves and for the vendors or lessors of this property whose agents they are give notice that:

- (i) the particulars are set out as a general outline only for the guidance of intending purchasers or lessees, and do not constitute, nor constitute part of, an offer or contract;
- (ii) all descriptions, dimensions, references to the condition and necessary permissions for use and occupation, and other details are given in good faith and are believed to be correct but any intending purchasers or tenants should not rely on them as statements or representations of fact but must satisfy themselves by inspection or otherwise as to the correctness of each of them;
- (iii) no person in the employment of JP & Brimelow Estate Agents Ltd has any authority to make or give any representation or warranty whatever in relation to this property.

jpandbrimelowestateagents

@jpandbrimelow