

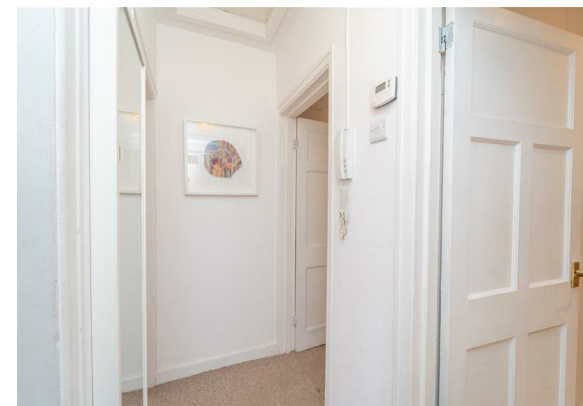
59 Houghend Avenue, Chorlton, Manchester, M21 7SE



Offers In The Region Of £160,000

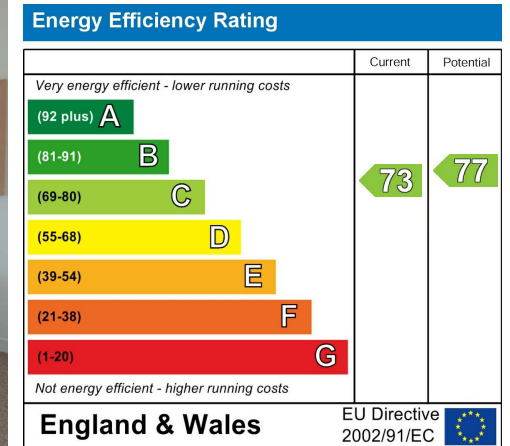
 1  1  1  C

VIDEO TOUR AVAILABLE A well-kept, ONE DOUBLE BEDROOM first floor apartment. Situated in a highly popular residential area, off Mauldeth Road West in Chorlton. Houghend Avenue is a cul-de-sac located nearby to Chorlton Park and local shopping parade and within walking distance to Chorlton town centre and Beech Road with its array of independent shops, bars and restaurants. The property also benefits from fantastic transport links and is located on the doorstep to Barlow Moor Road Metrolink station providing convenient access into The City Centre, Media City and Manchester Airport. The well-proportioned accommodation comprises; An entrance hall with stairs leading up to a private entrance hall, a good-sized lounge/diner, double bedroom with built in storage, a white four-piece bathroom suite and a fitted kitchen. The property is warmed by gas central heating. Externally the property boasts a large PRIVATE REAR GARDEN enclosed by timber panelled fencing. Early viewing is advised to appreciate the potential of this property.



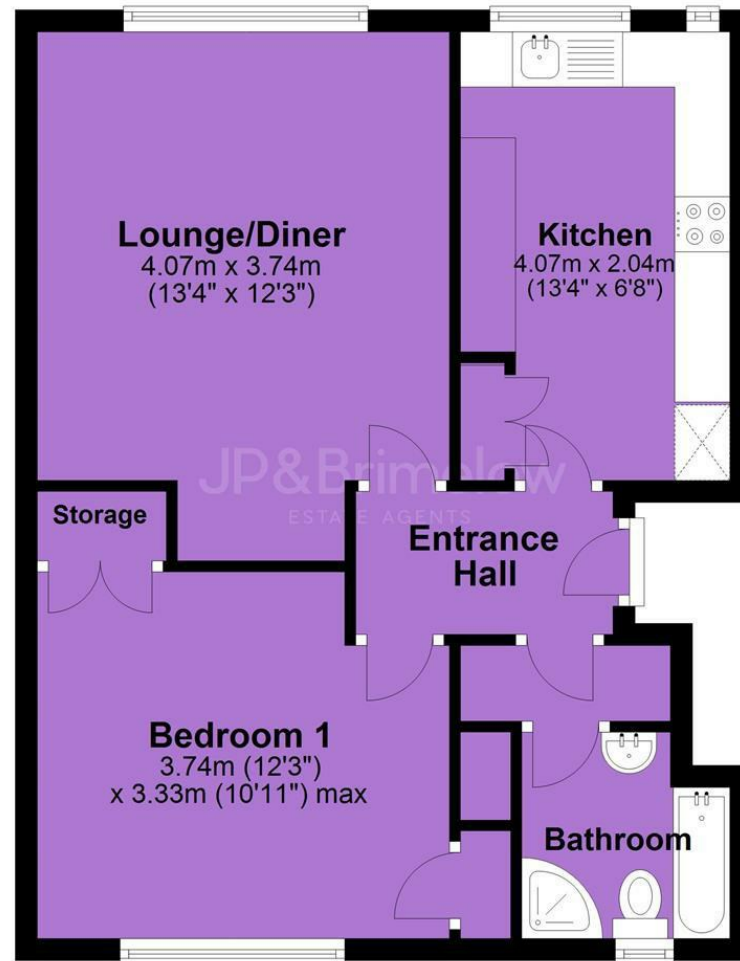


EPC Chart



Tenure: **Leasehold** Council Tax Band: **A**

First Floor



JP & Brimelow Estate Agents Ltd
430 Barlow Moor Road, Manchester, M21 8AD
Tel: 0161 8822233
E: sales@jpbrimelow.co.uk www.jpandbrimelow.co.uk



JP & Brimelow
ESTATE AGENTS

NOTICE: JP & Brimelow Estate Agents Ltd for themselves and for the vendors or lessors of this property whose agents they are give notice that:

- (i) the particulars are set out as a general outline only for the guidance of intending purchasers or lessees, and do not constitute, nor constitute part of, an offer or contract;
- (ii) all descriptions, dimensions, references to the condition and necessary permissions for use and occupation, and other details are given in good faith and are believed to be correct but any intending purchasers or tenants should not rely on them as statements or representations of fact but must satisfy themselves by inspection or otherwise as to the correctness of each of them;
- (iii) no person in the employment of JP & Brimelow Estate Agents Ltd has any authority to make or give any representation or warranty whatever in relation to this property.

jpandbrimelowestateagents

@jpandbrimelow