

Flat 11 Regents Court 155-157, Withington Road, Whalley Range, Manchester, M16 8EE



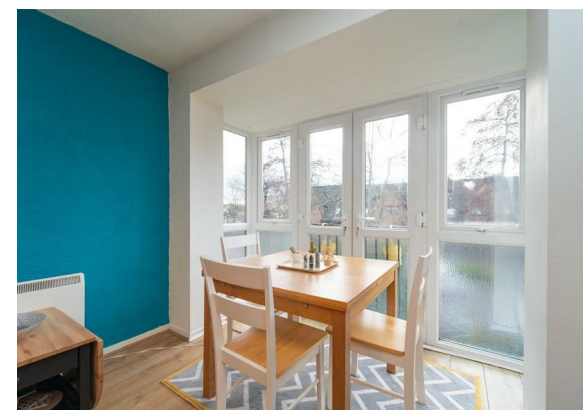
**JP&Brimelow**  
ESTATE AGENTS



# Offers In The Region Of £180,000

 2  1  1  C

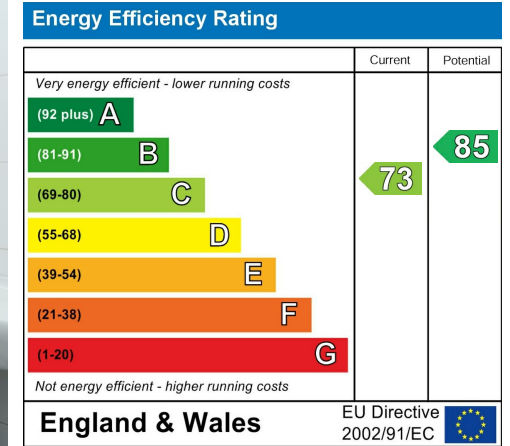
\*\*\* VIDEO TOUR AVAILABLE\*\*\* A delightful and well presented, TWO DOUBLE BEDROOM, second floor apartment. Located on Withington Road here in Whalley Range. Just a short distance from Alexandra Park, nearby to all of the independent bars/restaurants including 'The Hilary Step' bar on Upper Chorlton Road, Tesco Metro & The Co-op convenience store are a few minutes stroll away on Withington Road and fantastic transport links on Alexandra Road South giving you direct access into the City Centre. In brief the accommodation comprises of; A communal entrance hall with stairs leading to all floors, a private entrance hall with useful storage cupboard, two double bedrooms one currently being used as an office, a good-sized lounge/dining room with Juliet balcony, a modern fitted kitchen, useful storage cupboard and a white three-piece bathroom suite. The property benefits from wall mounted electric heating, an intercom system, well maintained communal grounds and communal off road parking.







## EPC Chart



Tenure: **Leasehold** Council Tax Band: **A**

## Second Floor



JP & Brimelow Estate Agents Ltd  
 430 Barlow Moor Road, Manchester, M21 8AD  
 Tel: 0161 8822233  
 E: sales@jpbrimelow.co.uk www.jpandbrimelow.co.uk



**JP & Brimelow**  
 ESTATE AGENTS

NOTICE: JP & Brimelow Estate Agents Ltd for themselves and for the vendors or lessors of this property whose agents they are give notice that:

- (i) the particulars are set out as a general outline only for the guidance of intending purchasers or lessees, and do not constitute, nor constitute part of, an offer or contract;
- (ii) all descriptions, dimensions, references to the condition and necessary permissions for use and occupation, and other details are given in good faith and are believed to be correct but any intending purchasers or tenants should not rely on them as statements or representations of fact but must satisfy themselves by inspection or otherwise as to the correctness of each of them;
- (iii) no person in the employment of JP & Brimelow Estate Agents Ltd has any authority to make or give any representation or warranty whatever in relation to this property.

jpandbrimelowestateagents

@jpandbrimelow