

Flat 3 47 Zetland Road, Chorlton, Manchester, M21 8TJ



FOR SALE  
JP&Brimelow  
ESTATE AGENTS  
0161 882 2233

**JP&Brimelow**  
ESTATE AGENTS

# Offers In The Region Of £265,000

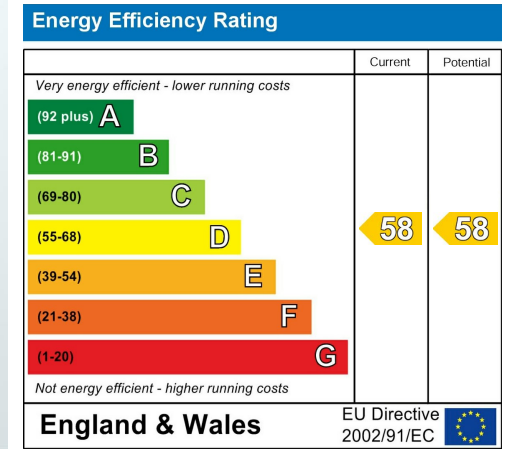


\*\*\*VIDEO TOUR AVAILABLE\*\*\* A beautifully presented and spacious top-floor apartment featuring TWO DOUBLE BEDROOMS, located within this elegant, period, bay-fronted semi-detached property. Located in the heart of Chorlton on a highly sought-after residential street, this property is just a short walk from Chorlton's centre and the vibrant Beech Road, with its array of independent shops, bars, and restaurants. It's also close to local parks and the Metrolink on Wilbraham Road, providing direct access to the City Centre and Media City. This light and well-proportioned accommodation consists of a communal entrance hallway, a private entrance hallway, an open plan lounge/dining opening to a fully fitted kitchen, two double bedrooms a utility area and a three-piece white bathroom suite complete with underfloor heating. The property benefits from gas fired central heating, a security alarm, a secure bike shed and an attractive landscaped large communal lawned garden to the rear. Would ideally suit a first-time buyer, investor or professional couple due to the location.



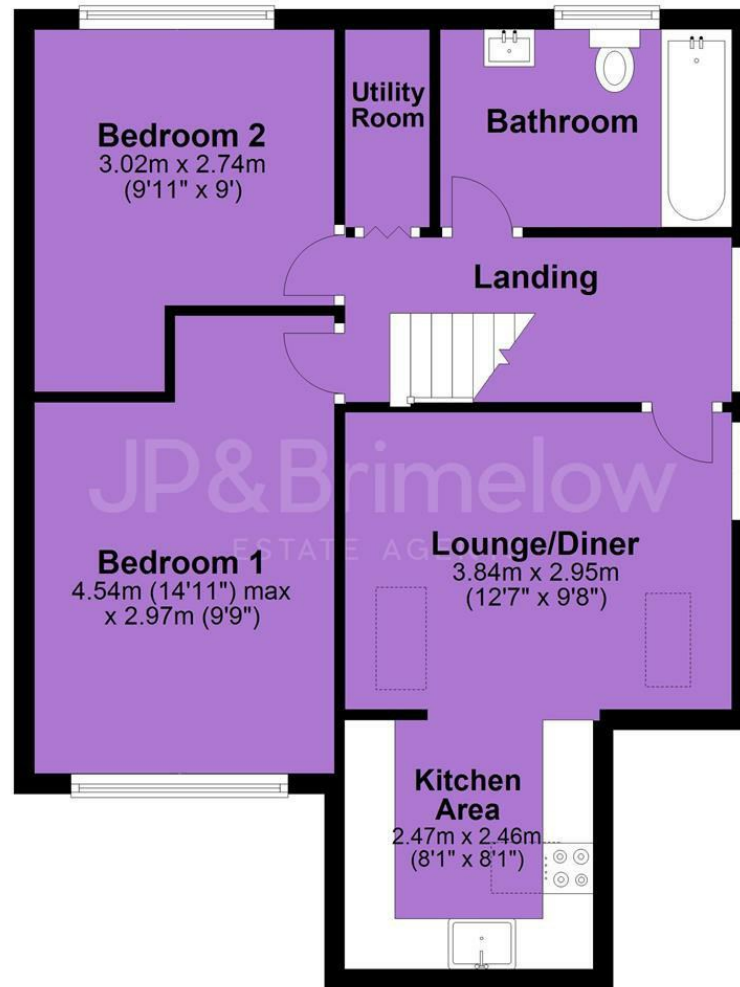


## EPC Chart



Tenure: **Leasehold** Council Tax Band: **A**

## Top Floor



JP & Brimelow Estate Agents Ltd  
 430 Barlow Moor Road, Manchester, M21 8AD  
 Tel: 0161 8822233  
 E: sales@jpbrimelow.co.uk www.jpandbrimelow.co.uk



**JP & Brimelow**  
 ESTATE AGENTS

NOTICE: JP & Brimelow Estate Agents Ltd for themselves and for the vendors or lessors of this property whose agents they are give notice that:

- (i) the particulars are set out as a general outline only for the guidance of intending purchasers or lessees, and do not constitute, nor constitute part of, an offer or contract;
- (ii) all descriptions, dimensions, references to the condition and necessary permissions for use and occupation, and other details are given in good faith and are believed to be correct but any intending purchasers or tenants should not rely on them as statements or representations of fact but must satisfy themselves by inspection or otherwise as to the correctness of each of them;
- (iii) no person in the employment of JP & Brimelow Estate Agents Ltd has any authority to make or give any representation or warranty whatever in relation to this property.

jpanbrimelowstateagents

@jpandbrimelow