

197 Mauldeth Road West, Withington, Manchester, M20 1BJ



JP&Brimelow
ESTATE AGENTS

Offers In The Region Of £250,000

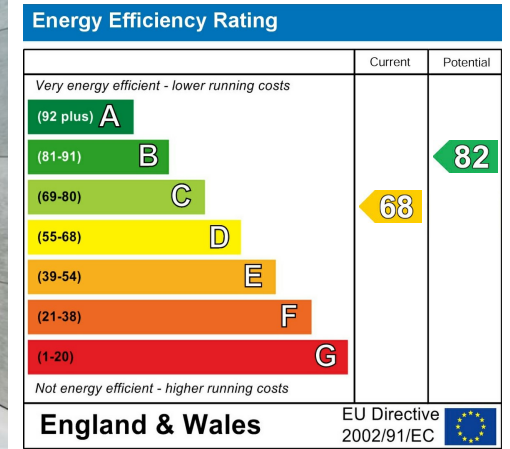
 3  1  2  D

VIDEO TOUR AVAILABLE A well-presented, THREE BEDROOM, semi detached property. This traditional home is close to fantastic transport links creating easy access to Manchester City Centre and Manchester Airport. Hough end playing fields and Hough end Leisure centre are also on your doorstep. The accommodation if brief comprises of; An entrance hall with useful storage cupboard, a dining room to the front aspect with a bay window, a good-sized lounge with views and access out into the rear enclosed garden via patio doors and a fitted kitchen completing this floor. To the first floor the landing reveals a useful storage cupboard, three good sized bedrooms and a white three-piece family bathroom. The property benefits from gas fired central heating and both front and rear enclosed gardens. ** Please note this property has Japanese Knotweed **



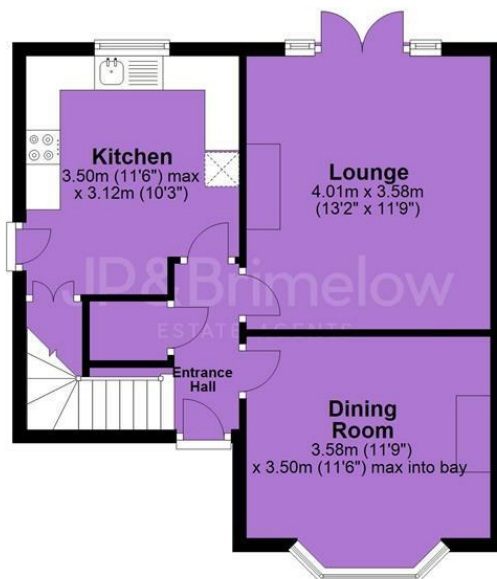


EPC Chart



Tenure: **Freehold** Council Tax Band: **A**

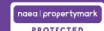
Ground Floor



First Floor



JP & Brimelow Estate Agents Ltd
430 Barlow Moor Road, Manchester, M21 8AD
Tel: 0161 8822233
E: sales@jpbrimelow.co.uk www.jpandbrimelow.co.uk



JP & Brimelow
ESTATE AGENTS

NOTICE: JP & Brimelow Estate Agents Ltd for themselves and for the vendors or lessors of this property whose agents they are give notice that:

- (i) the particulars are set out as a general outline only for the guidance of intending purchasers or lessees, and do not constitute, nor constitute part of, an offer or contract;
- (ii) all descriptions, dimensions, references to the condition and necessary permissions for use and occupation, and other details are given in good faith and are believed to be correct but any intending purchasers or tenants should not rely on them as statements or representations of fact but must satisfy themselves by inspection or otherwise as to the correctness of each of them;
- (iii) no person in the employment of JP & Brimelow Estate Agents Ltd has any authority to make or give any representation or warranty whatever in relation to this property.

 [jpandbrimelowstateagents](https://www.instagram.com/jpandbrimelowstateagents)

 [@jpandbrimelow](https://www.twitter.com/jpandbrimelow)