

29 Dartmouth Road, Chorlton, Manchester, M21 8XL



JP&Brimelow
ESTATE AGENTS



 4  2  3  C

*** VIDEO TOUR AVAILABLE*** An extended and beautifully presented, FOUR DOUBLE BEDROOM, bay fronted period property. This property is situated in a prime location in Chorlton and offers a wealth of charm, character and modern living set over four floors.

The excellent Chorlton Park is a short walk away, good primary and secondary schools are all nearby, the Metrolink station on Wilbraham Road gives you direct access into the city centre and the restaurant/café/bar culture that Chorlton is well known for is a stone's throw away.

In brief this stunning property consists of; An entrance hall which allows access down into the useful chamber cellars, downstairs W.C, a good sized lounge with bay window to the front aspect, a family room complete with herringbone flooring and a log burner. The family room leads through to the impressive fitted kitchen which has a central breakfast island and dining area, Bi-fold doors to the rear open out into the rear enclosed garden. Offering a perfect and seamlessly blended space for entertaining.

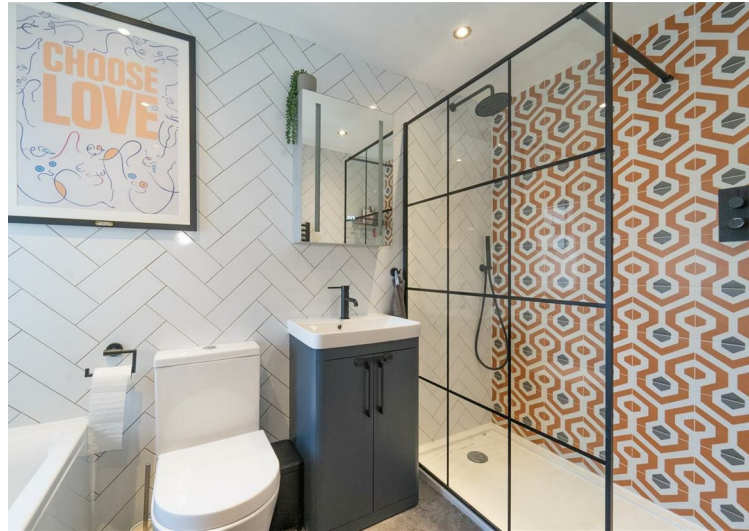
Stairs to the first floor reveal a landing leading to three good sized bedrooms, two benefiting from built in storage. A modern fourpiece bathroom suite is also located on this floor.

Whilst to the second floor a further bedroom can be found, a generous storage space and useful eaves storage complete this fantastic home.

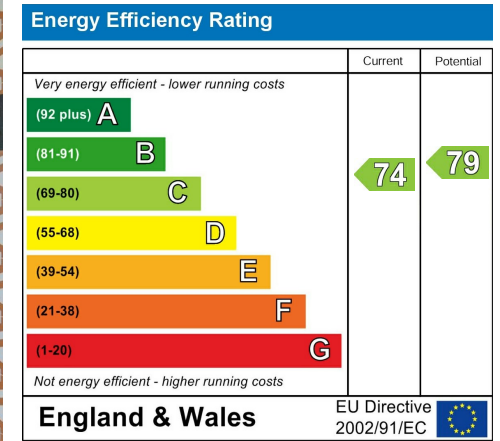
The property benefits from, gas fired central heating, picture rails and ceiling cornicing, a driveway providing off road parking, an alarm system and a rear enclosed garden.

£750,000





EPC Chart



Tenure: Freehold Council Tax Band: D



JP & Brimelow Estate Agents Ltd
 430 Barlow Moor Road, Manchester, M21 8AD
 Tel: 0161 8822233
 E: sales@jpbrimelow.co.uk www.jpandbrimelow.co.uk



JP & Brimelow
 ESTATE AGENTS

NOTICE: JP & Brimelow Estate Agents Ltd for themselves and for the vendors or lessors of this property whose agents they are give notice that:

- (i) the particulars are set out as a general outline only for the guidance of intending purchasers or lessees, and do not constitute, nor constitute part of, an offer or contract;
- (ii) all descriptions, dimensions, references to the condition and necessary permissions for use and occupation, and other details are given in good faith and are believed to be correct but any intending purchasers or tenants should not rely on them as statements or representations of fact but must satisfy themselves by inspection or otherwise as to the correctness of each of them;
- (iii) no person in the employment of JP & Brimelow Estate Agents Ltd has any authority to make or give any representation or warranty whatever in relation to this property.

jpandbrimelowstateagents

@jpandbrimelow

