

54 Clarendon Road, Whalley Range, Manchester, M16 8LD



JP&Brimelow
ESTATE AGENTS



 6  3  2  D

VIDEO TOUR AVAILABLE A beautifully presented and deceptively spacious SIX DOUBLE BEDROOM semi-detached home, full of character. Ideally located in a highly sought-after residential area on the borders of Whalley Range and Chorlton.

Conveniently located within walking distance of the amenities on Clarendon Road in Whalley Range, Manley Park, Alexandra Park, Manley Park Primary School, the vibrant café scene on Manchester Road, and Chorlton Metrolink station, providing direct access to the city centre and Media City.

In summary, the accommodation features an entrance hall with access to a converted basement, a front-facing living room with a bay window, a downstairs W.C., a beautifully fitted kitchen/breakfast room, and a family room at the rear with doors leading to the enclosed garden, completing the ground floor.

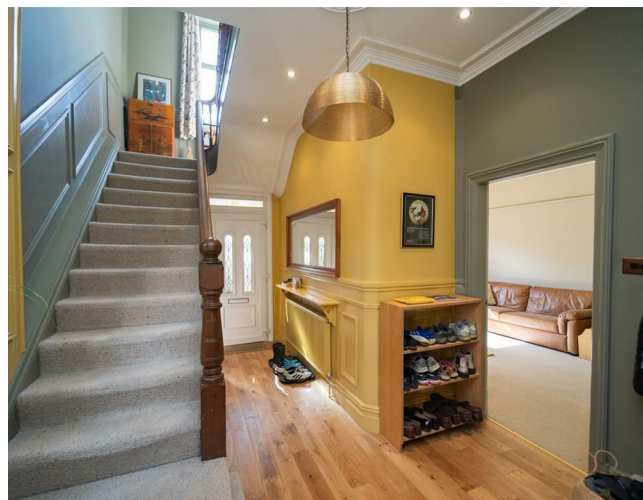
The converted basement is fully self-contained - it includes its own entrance, a hallway, a three-piece shower room, a living room, a fully fitted kitchen/breakfast room, and a double bedroom with direct access to the enclosed rear garden. The current owners rent this out, and income can be up to £7,500 p.a. tax free.

To the first floor there are a further three good sized double bedrooms and a three-piece family bathroom.

The second floor offers a landing that doubles as an office space, two generously sized double bedrooms, and access to a four-piece Jack and Jill bathroom with additional storage in the eaves.

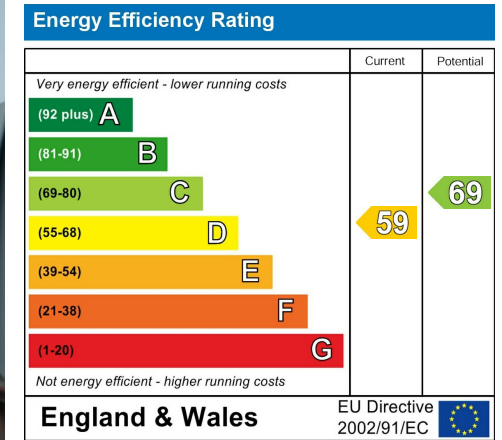
The property features high ceilings, stained and leaded glass windows, and is warmed by gas-fired central heating. It also benefits from a paved driveway offering secure off-road parking and a rear enclosed lawned garden. Situated within walking distance of well-established primary schools, as well as independent shops, bars, and restaurants on Upper Chorlton Road, it is ideal for a professional couple due to its location or a growing family.

£685,000





EPC Chart



Tenure: Freehold Council Tax Band: C



JP & Brimelow Estate Agents Ltd
 430 Barlow Moor Road, Manchester, M21 8AD
 Tel: 0161 8822233
 E: sales@jpbrimelow.co.uk www.jpandbrimelow.co.uk



JP & Brimelow
 ESTATE AGENTS

NOTICE: JP & Brimelow Estate Agents Ltd for themselves and for the vendors or lessors of this property whose agents they are give notice that:

- (i) the particulars are set out as a general outline only for the guidance of intending purchasers or lessees, and do not constitute, nor constitute part of, an offer or contract;
- (ii) all descriptions, dimensions, references to the condition and necessary permissions for use and occupation, and other details are given in good faith and are believed to be correct but any intending purchasers or tenants should not rely on them as statements or representations of fact but must satisfy themselves by inspection or otherwise as to the correctness of each of them;
- (iii) no person in the employment of JP & Brimelow Estate Agents Ltd has any authority to make or give any representation or warranty whatever in relation to this property.

jpandbrimelowstateagents

@jpandbrimelow

