

25 Neale Road, Chorlton Green, Manchester, M21 9DP

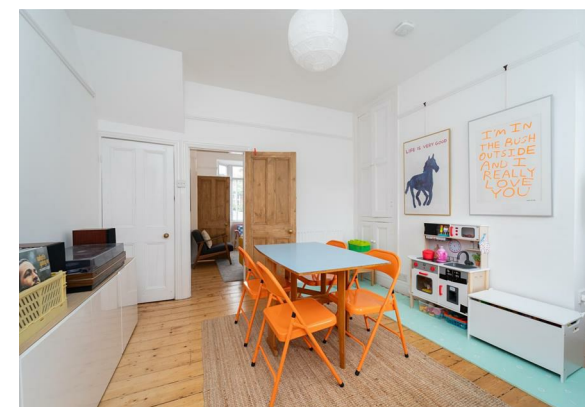


JP & Brimelow
ESTATE AGENTS

Offers In The Region Of £385,000




VIDEO TOUR AVAILABLE A charming and beautifully presented TWO DOUBLE BEDROOMED, period mid-terrace house that perfectly showcases the elegance of period properties in the area. This delightful home boasts entrance hallway, a lounge with bay window to the front aspect, a dining room with stripped and varnished floor boards leading to a fitted kitchen to the ground floor with access out into the rear enclosed lawned courtyard style garden. To the first floor there is a landing leading to two good sized double bedrooms and a modern white three-piece bathroom with a shower over. The property benefits from a front and rear enclosed lawned courtyard style garden with established flower beds. Located in the sought-after area of Chorlton Green off Beech Road, nearby to independent shops, cafes, restaurants and conveniently located close by to Beech Road Park, Chorlton Nature Reserve and excellent primary schools.





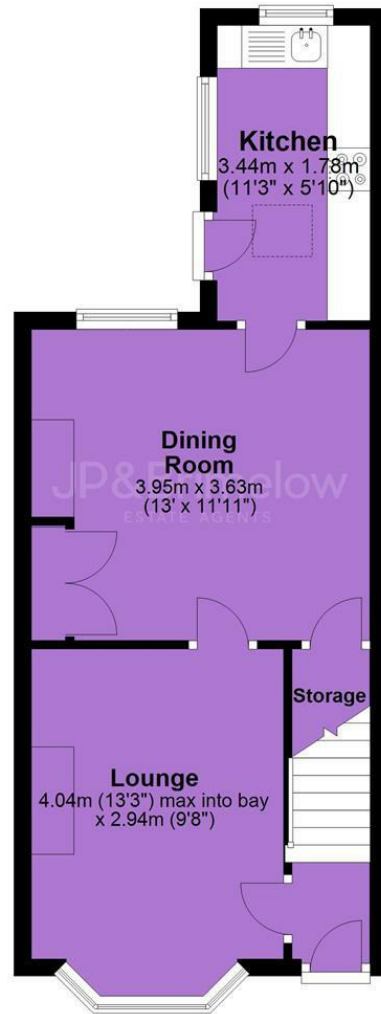
EPC Chart

Energy Efficiency Rating		
	Current	Potential
<i>Very energy efficient - lower running costs</i>		
(92 plus) A		88
(81-91) B		
(69-80) C		
(55-68) D	68	
(39-54) E		
(21-38) F		
(1-20) G		
<i>Not energy efficient - higher running costs</i>		
England & Wales		EU Directive 2002/91/EC 

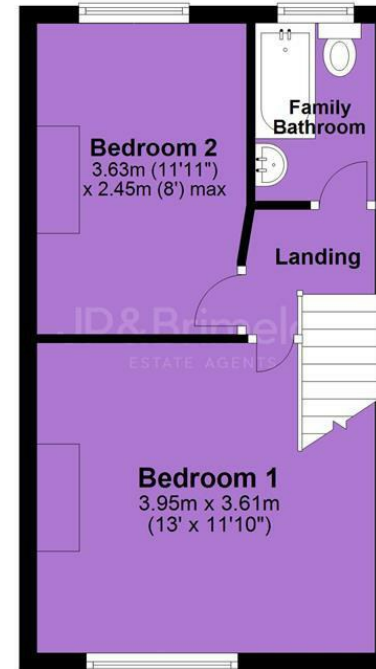


Tenure: **Freehold** Council Tax Band: **B**

Ground Floor



First Floor



JP & Brimelow Estate Agents Ltd
430 Barlow Moor Road, Manchester, M21 8AD
Tel: 0161 8822233
E: sales@jpbrimelow.co.uk www.jpandbrimelow.co.uk



JP & Brimelow
ESTATE AGENTS

NOTICE: JP & Brimelow Estate Agents Ltd for themselves and for the vendors or lessors of this property whose agents they are give notice that:

- (i) the particulars are set out as a general outline only for the guidance of intending purchasers or lessees, and do not constitute, nor constitute part of, an offer or contract;
- (ii) all descriptions, dimensions, references to the condition and necessary permissions for use and occupation, and other details are given in good faith and are believed to be correct but any intending purchasers or tenants should not rely on them as statements or representations of fact but must satisfy themselves by inspection or otherwise as to the correctness of each of them;
- (iii) no person in the employment of JP & Brimelow Estate Agents Ltd has any authority to make or give any representation or warranty whatever in relation to this property.

jpandbrimelowestateagents

@jpandbrimelow