

3 Wardley Avenue, Whalley Range, Manchester, M16 8WX



JP&Brimelow
ESTATE AGENTS



 4  2  2  D

VIDEO TOUR AVAILABLE A spacious and attractive Four-Bedroom, Semi-detached family home located in Whalley Range.

This well-presented four-bedroom, bay-fronted semi-detached home is located on a sought-after cul-de-sac in Whalley Range, just off St Austell Road. Offering a perfect blend of period charm and modern comfort, this spacious property is ideal for families.

The home features high ceilings and restored double-glazed windows with original stained glass. It's just a 15-minute walk to St Werburgh's Road Metrolink Station, providing easy access to Manchester City Centre and MediaCityUK. Excellent schools, including Chorlton High School, and leisure facilities like Whalley Range Cricket and Tennis Club are nearby.

The ground floor comprises a welcoming entrance hallway, a family room with a bay window, a lounge with views of the rear garden, and a spacious kitchen/diner with access to the patio and lawned garden. There is also a downstairs W.C and understairs storage.

Upstairs, there are four well-sized bedrooms, including a master bedroom with a bay window, and a modern three-piece family bathroom.

Externally, the property benefits from a driveway with off-road parking leading to a useful garage. The rear garden is fully enclosed with a lawn and mature borders, offering a private outdoor space.

Charming period features like a cast iron fireplace and original picture rails add character and the property is warmed by gas-fired central heating.

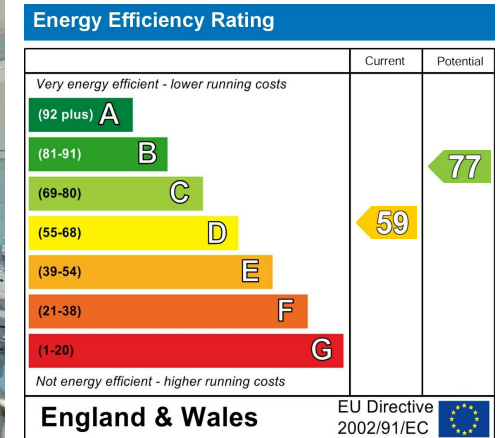
Early viewing is highly recommended to appreciate this fantastic family home in a prime location.

£600,000



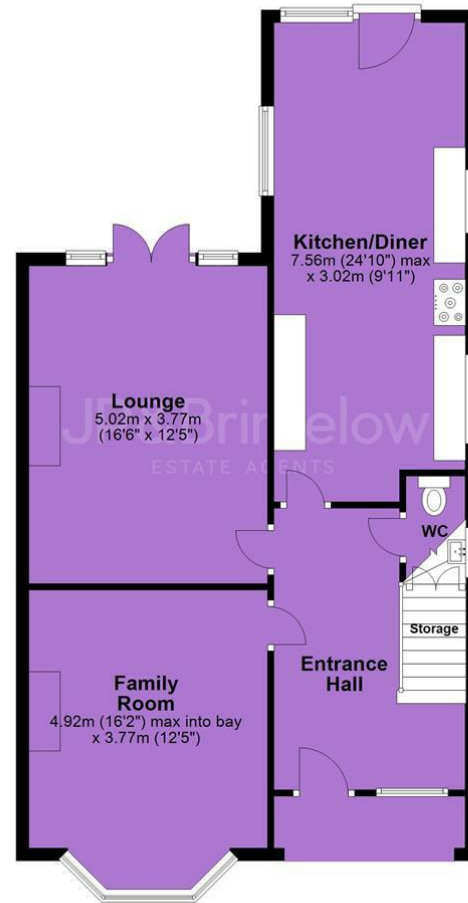


EPC Chart

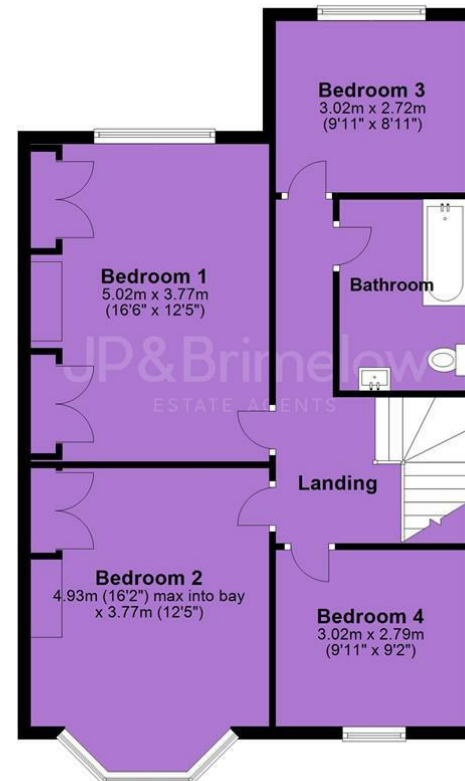


Tenure: Freehold Council Tax Band: D

Ground Floor



First Floor



JP & Brimelow Estate Agents Ltd
430 Barlow Moor Road, Manchester, M21 8AD
Tel: 0161 8822233
E: sales@jpbrimelow.co.uk www.jpandbrimelow.co.uk



JP & Brimelow
ESTATE AGENTS

NOTICE: JP & Brimelow Estate Agents Ltd for themselves and for the vendors or lessors of this property whose agents they are give notice that:

- (i) the particulars are set out as a general outline only for the guidance of intending purchasers or lessees, and do not constitute, nor constitute part of, an offer or contract;
- (ii) all descriptions, dimensions, references to the condition and necessary permissions for use and occupation, and other details are given in good faith and are believed to be correct but any intending purchasers or tenants should not rely on them as statements or representations of fact but must satisfy themselves by inspection or otherwise as to the correctness of each of them;
- (iii) no person in the employment of JP & Brimelow Estate Agents Ltd has any authority to make or give any representation or warranty whatever in relation to this property.

jpandbrimelowstateagents

@jpandbrimelow

