

23 Longford Road, Chorlton, Manchester, M21 9WP

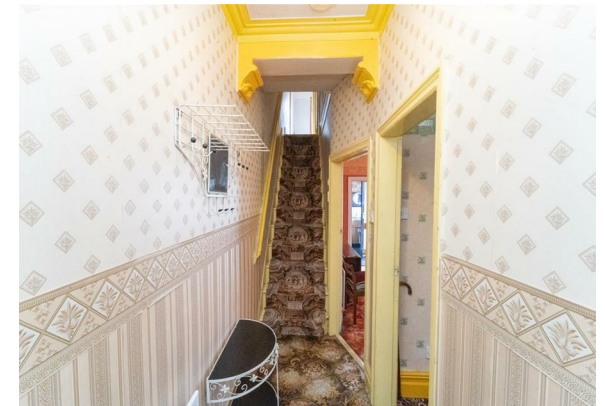


**JP & Brimelow**  
ESTATE AGENTS

# Offers In The Region Of £400,000

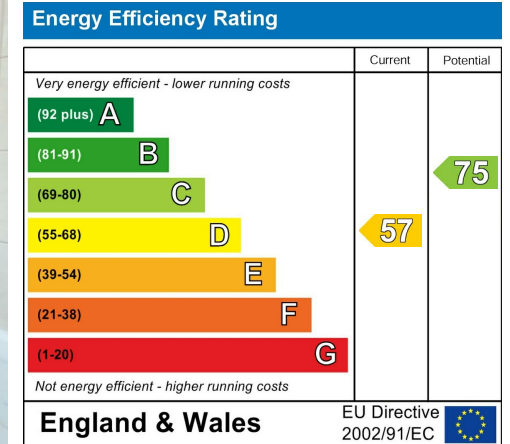


\*\*\*VIDEO TOUR AVAILABLE\*\*\* An attractive THREE BEDROOM, period, mid-terrace property. Located in the heart of Chorlton. Positioned on a popular tree lined residential road off Oswald Road, close by to local amenities including independent restaurants and shops. The Metrolink stations on either Rye Bank Road, Firswood or Wilbraham Road, Chorlton give you direct access to Manchester City centre and Media City at Salford Quays. \*\*\* In need of cosmetic updating throughout\*\*\* The well-planned accommodation comprises briefly of; An entrance hall, a good-sized lounge to the front aspect, a family room with views out over the rear courtyard, useful under stairs storage and a kitchen with access out into the rear courtyard completing the ground floor. Whilst to the first floor there are three bedrooms and a three-piece family bathroom. The property has great potential with ceiling coving, gas fired central heating and has a rear enclosed courtyard. OFFERED WITH NO VENDOR CHAIN.



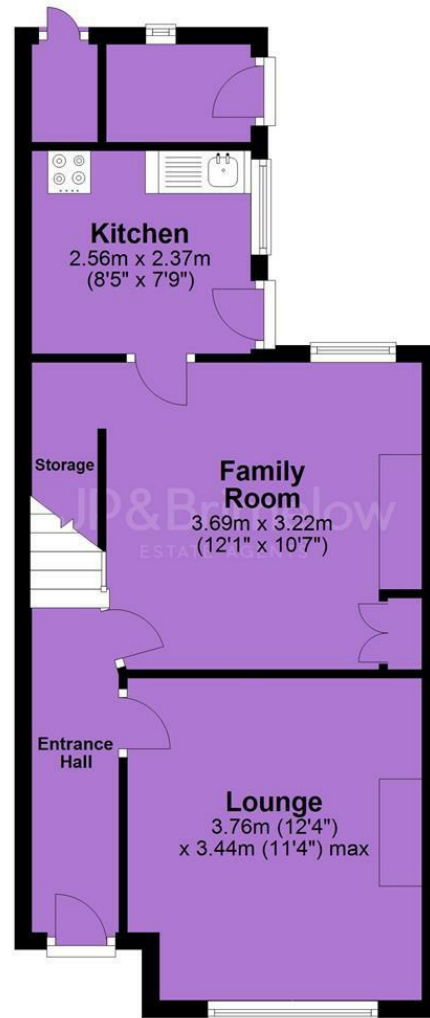


## EPC Chart

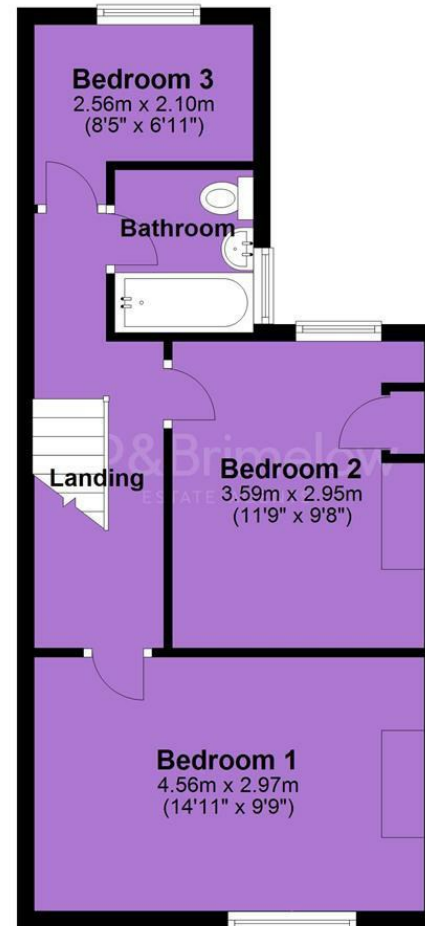


Tenure: **Freehold** Council Tax Band: **B**

## Ground Floor



## First Floor



JP & Brimelow Estate Agents Ltd  
430 Barlow Moor Road, Manchester, M21 8AD  
Tel: 0161 8822233  
E: sales@jpbrimelow.co.uk www.jpandbrimelow.co.uk



**JP & Brimelow**  
ESTATE AGENTS

NOTICE: JP & Brimelow Estate Agents Ltd for themselves and for the vendors or lessors of this property whose agents they give notice that:

- (i) the particulars are set out as a general outline only for the guidance of intending purchasers or lessees, and do not constitute, nor constitute part of, an offer or contract;
- (ii) all descriptions, dimensions, references to the condition and necessary permissions for use and occupation, and other details are given in good faith and are believed to be correct but any intending purchasers or tenants should not rely on them as statements or representations of fact but must satisfy themselves by inspection or otherwise as to the correctness of each of them;
- (iii) no person in the employment of JP & Brimelow Estate Agents Ltd has any authority to make or give any representation or warranty whatever in relation to this property.

jpandbrimelowstateagents

@jpandbrimelow