

42 Chequers Road, Chorlton Green, Manchester, M21 9DY



JP&Brimelow
ESTATE AGENTS



3 1 1 E

VIDEO TOUR AVAILABLE A stylishly presented and attractive THREE DOUBLE BEDROOM, Victorian mid terrace property spread over four floors, including a useful cellar. Perfectly situated just off the ever-popular Beech Road.

This attractive period home has been updated by the current owner and is positioned perfectly, close to the boutique shops, cafes, bars, and restaurants in the area plus the extensive nature reserve Chorlton is across the Green, and several excellent primary schools.

The well-planned accommodation comprises an entrance hallway, a through lounge/dining room with the lounge to the front with a bay window, a dining area with views into the rear courtyard style garden, access to the useful chamber cellars and a fitted kitchen/breakfast room to the ground floor with French doors leading out into the court yard style garden.

To the first floor there is a landing leading to two double bedrooms and a white four-piece family bathroom.

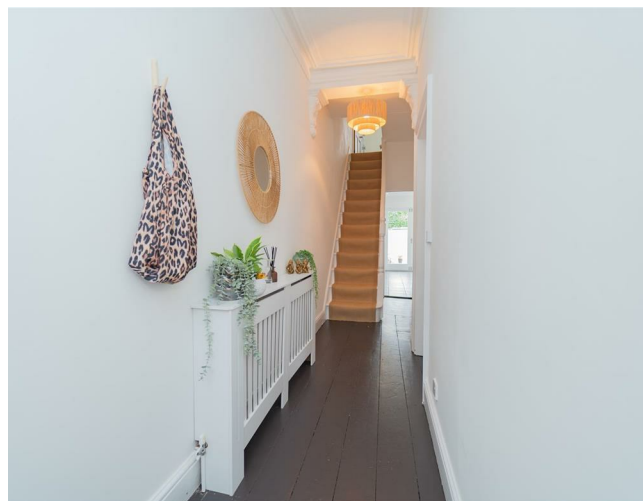
Whilst the second floor reveals an impressive double bedroom with useful storage space into the eaves completes this lovely home.

The property boasts stripped and varnished floor boards, high ceilings, coving, an alarm system, chamber cellars, is warmed by gas-fired central heating and a rear enclosed courtyard garden.

OFFERED WITH NO VENDOR CHAIN.


Early inspection is essential to appreciate the size and location of this charming Chorlton Green home.

£550,000





EPC Chart

Energy Efficiency Rating		Current	Potential
Very energy efficient - lower running costs			
(92 plus) A			
(81-91) B			
(69-80) C			71
(55-68) D		46	
(39-54) E			
(21-38) F			
(1-20) G			
Not energy efficient - higher running costs			
England & Wales		EU Directive 2002/91/EC 	



Tenure: Freehold Council Tax Band: C



JP & Brimelow Estate Agents Ltd
 430 Barlow Moor Road, Manchester, M21 8AD
 Tel: 0161 8822233
 E: sales@jpbrimelow.co.uk www.jpandbrimelow.co.uk



JP & Brimelow
 ESTATE AGENTS

NOTICE: JP & Brimelow Estate Agents Ltd for themselves and for the vendors or lessors of this property whose agents they give notice that:

- (i) the particulars are set out as a general outline only for the guidance of intending purchasers or lessees, and do not constitute, nor constitute part of, an offer or contract;
- (ii) all descriptions, dimensions, references to the condition and necessary permissions for use and occupation, and other details are given in good faith and are believed to be correct but any intending purchasers or tenants should not rely on them as statements or representations of fact but must satisfy themselves by inspection or otherwise as to the correctness of each of them;
- (iii) no person in the employment of JP & Brimelow Estate Agents Ltd has any authority to make or give any representation or warranty whatever in relation to this property.

