

13 Cartwright Road, Chorlton Green, Manchester, M21 9EY



JP&Brimelow
ESTATE AGENTS



4 2 2 D

****VIDEO TOUR AVAILABLE**** A stylishly presented and tastefully extended, FOUR BEDROOM period, mid-terrace property. Positioned in a highly popular residential area, off Kingshill Road in the heart of Chorlton Green. Within easy walking distance to all of the independent shops, bars and restaurants, Chorlton Nature Reserve, Chorlton Centre amenities, and a choice of fantastic primary schools nearby.

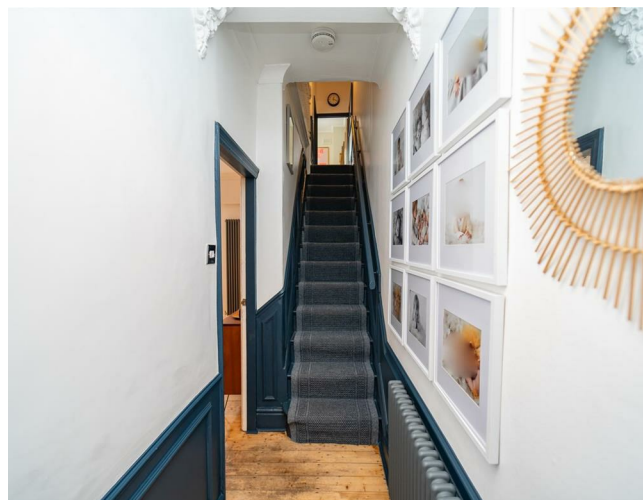
The well-planned accommodation measuring at over 1,200sq ft set over three floors and consists of a vestibule, an entrance hall, a through lounge/dining room with a bay window to the front aspect and a useful utility area off the dining room and an attractive fitted kitchen/breakfast room to the rear aspect, providing access into the rear enclosed south facing courtyard style garden.

To the first floor there is a landing leading to three bedrooms, and a beautifully presented three-piece family bathroom.

Whilst to the second floor there is a landing leading to a further impressive double bedroom that benefits from an ensuite three-piece shower room, and useful storage space available in the eaves of the loft.

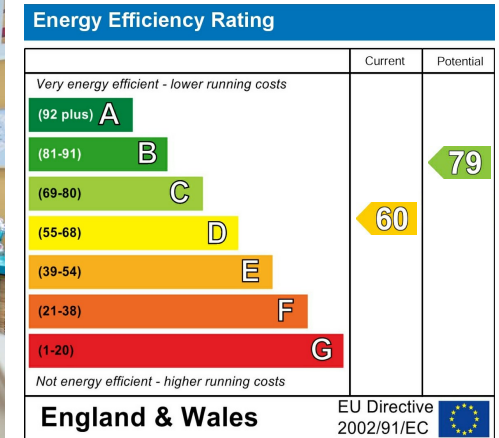
The property is warmed by gas fired central heating, a working log burner, has useful storage cupboards, a rear enclosed garden and period features throughout the property.

£525,000





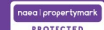
EPC Chart



Tenure: Freehold Council Tax Band: B



JP & Brimelow Estate Agents Ltd
 430 Barlow Moor Road, Manchester, M21 8AD
 Tel: 0161 8822233
 E: sales@jpbrimelow.co.uk www.jpandbrimelow.co.uk



JP & Brimelow
 ESTATE AGENTS

NOTICE: JP & Brimelow Estate Agents Ltd for themselves and for the vendors or lessors of this property whose agents they are give notice that:

- (i) the particulars are set out as a general outline only for the guidance of intending purchasers or lessees, and do not constitute, nor constitute part of, an offer or contract;
- (ii) all descriptions, dimensions, references to the condition and necessary permissions for use and occupation, and other details are given in good faith and are believed to be correct but any intending purchasers or tenants should not rely on them as statements or representations of fact but must satisfy themselves by inspection or otherwise as to the correctness of each of them;
- (iii) no person in the employment of JP & Brimelow Estate Agents Ltd has any authority to make or give any representation or warranty whatever in relation to this property.

jpandbrimelowestateagents

@jpandbrimelow

