

15 Cranbourne Road, Chorlton, Manchester, M21 8AP



JP & Brimelow
ESTATE AGENTS



 4  1  2  E

VIDEO TOUR AVAILABLE A spacious and attractive FOUR DOUBLE BEDROOM, bay fronted home. This Victorian, semi-detached residence is situated in a central spot, on a highly popular residential tree lined road off Barlow Moor Road.

Within walking distance of bars, shops, delis and restaurants including local favourites such as San Juan and The Laundrette on Beech Road. Close by to good local schools, parks and the Metrolink station on Wilbraham Road, giving you direct access into Manchester City centre, Media City and Manchester international airport.

This residence offers a wealth of character over four floors. The property consists of an entrance hallway, a through lounge/dining room and a kitchen to the ground floor with access into the rear enclosed lawned garden.

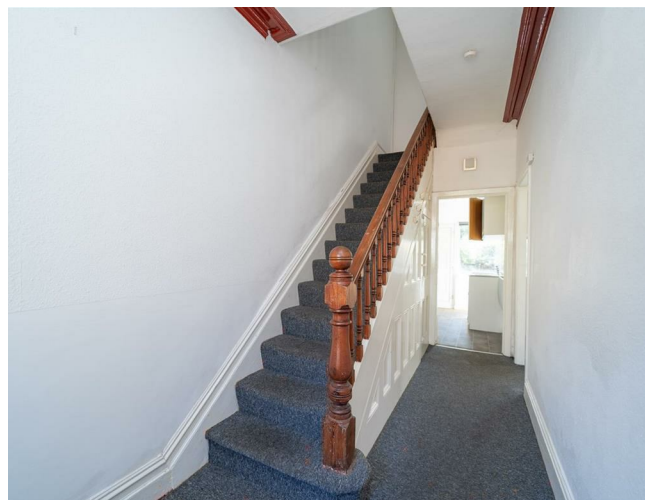
To the first floor there is a landing leading to two double bedrooms and a white three-piece shower room.

Whilst the second floor reveals a landing leading to a further two double bedrooms and a two-piece W.C.

The property benefits from high ceilings, ceiling coving, a useful chamber cellar providing storage space, front and rear enclosed lawned South facing garden.

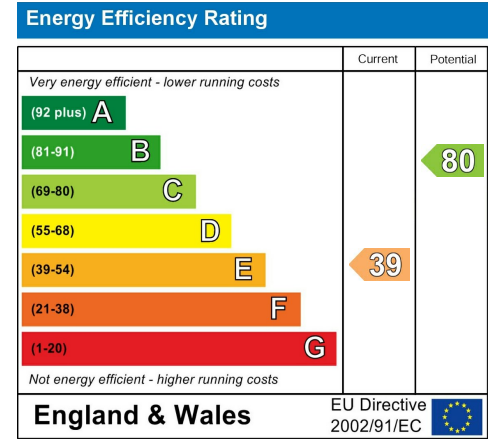
OFFERED WITH NO VENDOR CHAIN.

£600,000





EPC Chart



Tenure: Freehold Council Tax Band: C



JP & Brimelow Estate Agents Ltd
 430 Barlow Moor Road, Manchester, M21 8AD
 Tel: 0161 8822233
 E: sales@jpbrimelow.co.uk www.jpandbrimelow.co.uk



JP & Brimelow
 ESTATE AGENTS

NOTICE: JP & Brimelow Estate Agents Ltd for themselves and for the vendors or lessors of this property whose agents they give notice that:

- (i) the particulars are set out as a general outline only for the guidance of intending purchasers or lessees, and do not constitute, nor constitute part of, an offer or contract;
- (ii) all descriptions, dimensions, references to the condition and necessary permissions for use and occupation, and other details are given in good faith and are believed to be correct but any intending purchasers or tenants should not rely on them as statements or representations of fact but must satisfy themselves by inspection or otherwise as to the correctness of each of them;
- (iii) no person in the employment of JP & Brimelow Estate Agents Ltd has any authority to make or give any representation or warranty whatever in relation to this property.

jpandbrimelowstateagents

@jpandbrimelow

