

Flats 1-3 3 Oak Avenue, Chorlton, Manchester, M21 8BB



**JP&Brimelow**  
ESTATE AGENTS



# Offers In The Region Of £675,000

 5  3  2  D

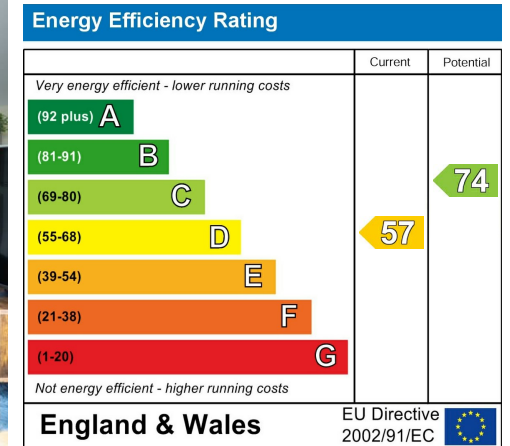
\*\*\*VIDEO TOUR AVAILABLE\*\*\*A rare opportunity to own this SEMI DETACHED PERIOD PROPERTY SPLIT INTO THREE FLATS. With FIVE DOUBLE BEDROOMS total. Positioned on a residential cul-de-sac, off Barlow Moor Road in a highly sought-after and central Chorlton location. This bay fronted property offers spacious accommodation over four floors including chamber cellars, with access into the rear enclosed lawned garden. The cellars have planning permission for a two bedroom apartment. The well-planned property consists of a two double bedroom apartment to the ground floor with a reception hallway, a three-piece bathroom, an open lounge with a bay window to the front aspect, leading through to an open plan fitted kitchen. To the first floor there is a further two double bedroom apartment, with a reception hallway, a three-piece bathroom, an open lounge with a bay window to the front aspect, leading through to an open plan fitted kitchen. Whilst the second floor reveals a one double bedroom apartment, with a hallway and useful storage cupboard, a fitted kitchen and a three-piece bathroom. The property is situated on one of the area's most popular avenue's and within walking distance to the centre of Chorlton and Beech Road. Within a five-minute walk of the Metrolink Station situated on Wilbraham Road, with easy access into Media City, Manchester Airport and Manchester city centre. Planning reference number- 137602/FO/2023



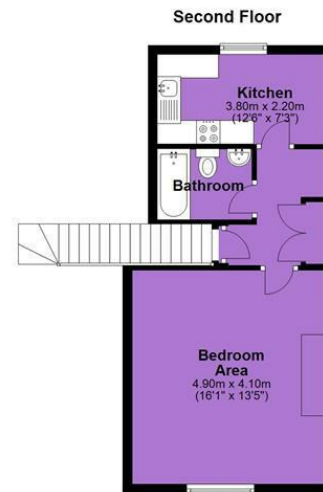
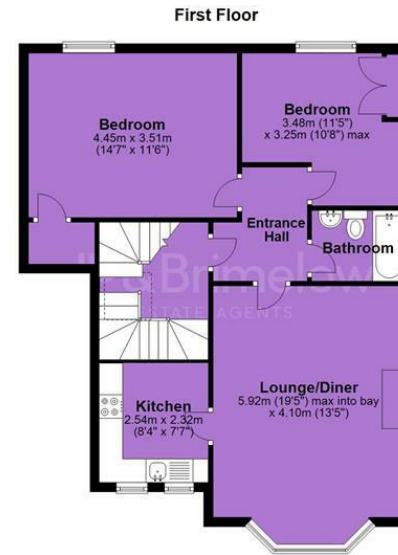
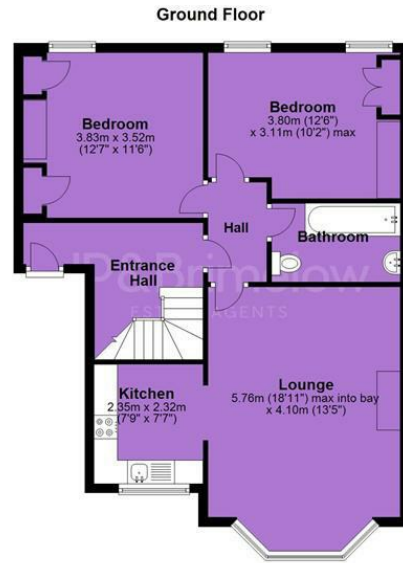




## EPC Chart



Tenure: **Freehold** Council Tax Band: **A**



JP & Brimelow Estate Agents Ltd  
 430 Barlow Moor Road, Manchester, M21 8AD  
 Tel: 0161 8822233  
 E: sales@jpbrimelow.co.uk www.jpandbrimelow.co.uk



**JP & Brimelow**  
 ESTATE AGENTS

NOTICE: JP & Brimelow Estate Agents Ltd for themselves and for the vendors or lessors of this property whose agents they are give notice that:

- (i) the particulars are set out as a general outline only for the guidance of intending purchasers or lessees, and do not constitute, nor constitute part of, an offer or contract;
- (ii) all descriptions, dimensions, references to the condition and necessary permissions for use and occupation, and other details are given in good faith and are believed to be correct but any intending purchasers or tenants should not rely on them as statements or representations of fact but must satisfy themselves by inspection or otherwise as to the correctness of each of them;
- (iii) no person in the employment of JP & Brimelow Estate Agents Ltd has any authority to make or give any representation or warranty whatever in relation to this property.

jpandbrimelowstateagents

@jpandbrimelow