

23 Lombard Grove, Fallowfield, Manchester, M14 6AN



JP&Brimelow
ESTATE AGENTS



4 2 1 D

VIDEO TOUR AVAILABLE An attractive FOUR BEDROOM period mid terrace property, with accommodation expanding over four floors. Centrally located within Fallowfield village, with easy access to Manchester city centre.

The property retains a host of period features throughout the home and consists of an entrance hallway, leading to a lounge to the front of the property with a box bay window and original cast iron fire place. Opening through to the dining room with a further original fireplace and leading via steps into the impressive fitted kitchen with access out into the rear enclosed courtyard.

Stairs lead from the kitchen down to the lower ground floor bedroom/reception room along with a utility area.

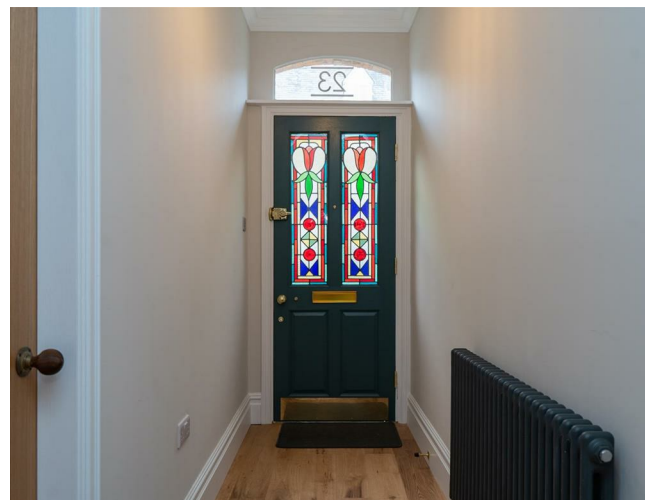
Whilst the first floor reveals two double bedrooms, the master having two large sash windows and a useful storage closet. A three-piece family bathroom with an elegant roll top bath. In addition, there is a further two-piece shower room. The top floor consists of a spacious loft room with two Velux windows.

This property is within easy reach of local amenities, including shops, cafes, and schools. The area is well-served by public transport, providing a quick and easy commute in to Manchester City Centre. Close by to The Christies hospital and Withington Hospital.

The property benefits from a recent full refurbishment, gas fired central heating, high ceilings and original period features.

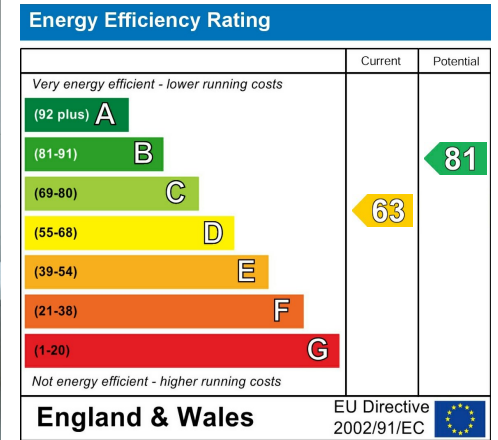
OFFERED WITH NO VENDOR CHAIN.

£385,000





EPC Chart



Tenure: Freehold Council Tax Band: D



JP & Brimelow Estate Agents Ltd
 430 Barlow Moor Road, Manchester, M21 8AD
 Tel: 0161 8822233
 E: sales@jpbrimelow.co.uk www.jpandbrimelow.co.uk



JP & Brimelow
 ESTATE AGENTS

NOTICE: JP & Brimelow Estate Agents Ltd for themselves and for the vendors or lessors of this property whose agents they give notice that:

- (i) the particulars are set out as a general outline only for the guidance of intending purchasers or lessees, and do not constitute, nor constitute part of, an offer or contract;
- (ii) all descriptions, dimensions, references to the condition and necessary permissions for use and occupation, and other details are given in good faith and are believed to be correct but any intending purchasers or tenants should not rely on them as statements or representations of fact but must satisfy themselves by inspection or otherwise as to the correctness of each of them;
- (iii) no person in the employment of JP & Brimelow Estate Agents Ltd has any authority to make or give any representation or warranty whatever in relation to this property.

jpandbrimelowstateagents

@jpandbrimelow

