

Flat 3, Alexandra Park House 28 Alexandra Road South,, Whalley Range, Manchester,
M16 8HU



Offers Over £215,000




****VIDEO TOUR AVAILABLE**** A spacious & beautifully presented TWO DOUBLE BEDROOM ground floor apartment, set within this attractive purpose-built gated development. Located opposite Alexandra Park, in a leafy location in Whalley Range. Within walking distance to nearby independent bars and restaurants on Upper Chorlton Road. Tesco Metro is close by on Withington Road and there are excellent bus links on your doorstep, giving you the commuter direct access into the City Centre or Manchester International Airport. This impressive apartment accommodation consists of a communal entrance hallway with stairs and lift to all floors, a private entrance hallway, an open plan lounge/dining room and a brand new fitted kitchen, two generous double bedrooms and a three-piece family bathroom. The apartment benefits from communal lawned gardens, CCTV, a bike store and is warmed by gas fired central heating. Secure gated car parking to the rear. Will suit a professional or a couple due to the size and location. Early viewing is highly recommended.





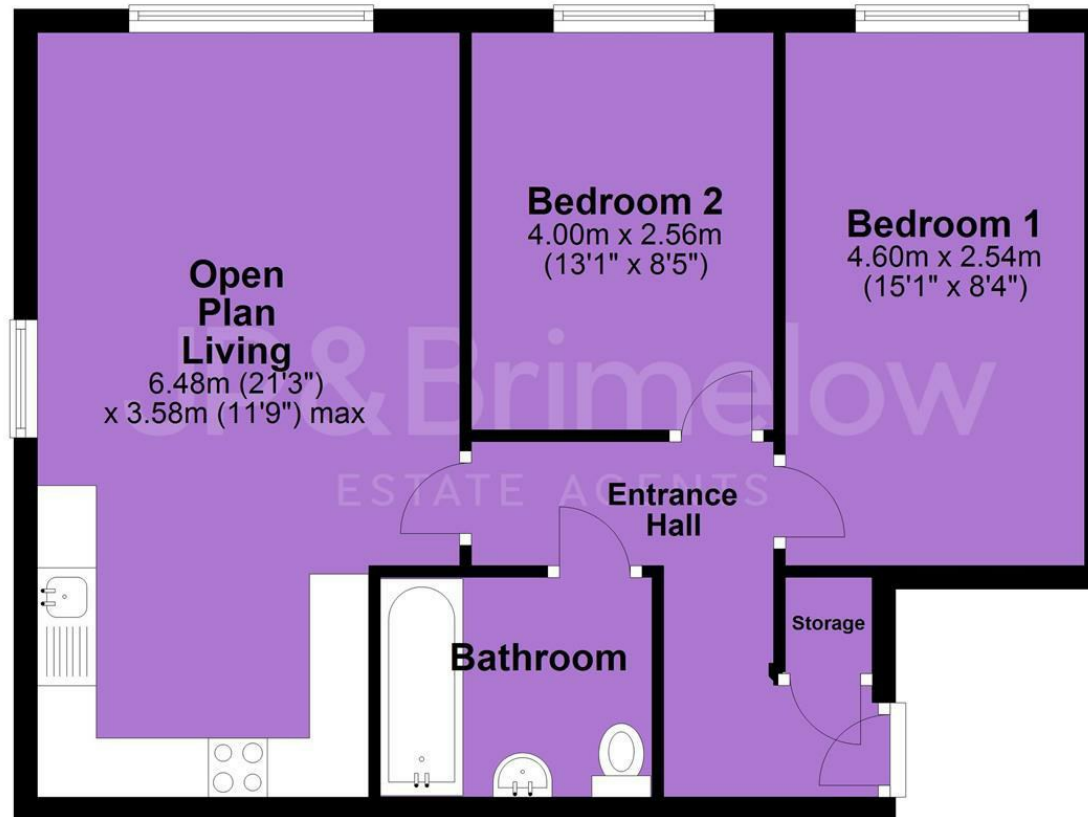
EPC Chart

Energy Efficiency Rating		Current	Potential
Very energy efficient - lower running costs			
(92 plus)	A		
(81-91)	B	77	80
(69-80)	C		
(55-68)	D		
(39-54)	E		
(21-38)	F		
(1-20)	G		
Not energy efficient - higher running costs			
England & Wales			EU Directive 2002/91/EC 



Tenure: **Leasehold** Council Tax Band: **B**

Ground Floor



JP & Brimelow Estate Agents Ltd
430 Barlow Moor Road, Manchester, M21 8AD
Tel: 0161 8822233
E: sales@jpbrimelow.co.uk www.jpandbrimelow.co.uk



JP & Brimelow
ESTATE AGENTS

NOTICE: JP & Brimelow Estate Agents Ltd for themselves and for the vendors or lessors of this property whose agents they are give notice that:

- (i) the particulars are set out as a general outline only for the guidance of intending purchasers or lessees, and do not constitute, nor constitute part of, an offer or contract;
- (ii) all descriptions, dimensions, references to the condition and necessary permissions for use and occupation, and other details are given in good faith and are believed to be correct but any intending purchasers or tenants should not rely on them as statements or representations of fact but must satisfy themselves by inspection or otherwise as to the correctness of each of them;
- (iii) no person in the employment of JP & Brimelow Estate Agents Ltd has any authority to make or give any representation or warranty whatever in relation to this property.

jpandbrimelowstateagents

@jpandbrimelow