

6 Beech Road, Chorlton, Manchester, M21 8BQ



JP&Brimelow
ESTATE AGENTS



 4  1  2  D

VIDEO TOUR AVAILABLE A delightful and well-presented FOUR DOUBLE BEDROOM, bay fronted semi-detached property located in a highly sought-after residential area on Beech Road.

Within strolling distance to all the independent shops, bars, restaurants available and Beech Road Park. Chorlton Nature Reserve, Chorlton centre amenities and with fantastic primary schools also nearby.

This spacious and well-planned accommodation comprises; an entrance hall, a useful two-piece downstairs W.C, a lounge with a bay window and stripped and varnished floor boards to the front aspect, a good-sized dining room with double patio doors leading out into the rear enclosed garden and a fully fitted kitchen along with a useful storage cupboard complete the ground floor.

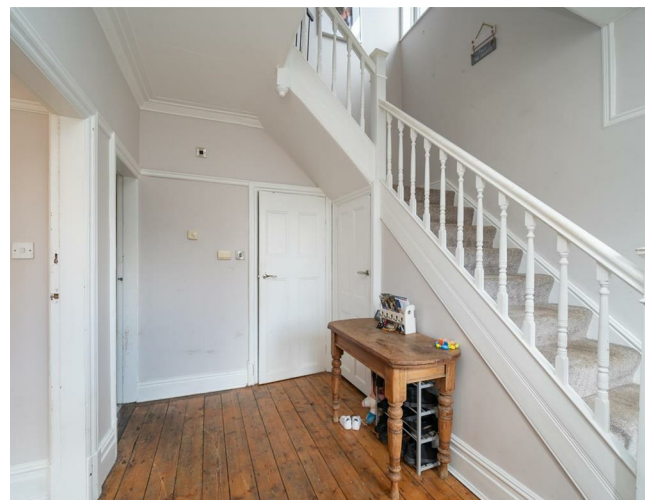
To the first floor there is a landing leading to four good sized bedrooms and a white fitted four-piece family bathroom.

The property benefits from having gas fired central heating, high ceilings, picture railings, ceiling coving, front and rear enclosed garden with mature trees, bushes and shrubs. There is an external storage cupboard providing perfect space for garden furniture.

OFFERED WITH NO VENDOR CHAIN.


Located close by to fantastic transport links on Barlow Moor Road giving you direct access into Didsbury and Manchester City Centre. The Metrolink station at St Werburghs Road giving you direct access to Media city and West Didsbury.

£585,000





EPC Chart

Energy Efficiency Rating		Current	Potential
Very energy efficient - lower running costs			
(92 plus) A			84
(81-91) B			
(69-80) C			
(55-68) D		64	
(39-54) E			
(21-38) F			
(1-20) G			
Not energy efficient - higher running costs			
England & Wales		EU Directive 2002/91/EC 	



Tenure: Freehold Council Tax Band: D



JP & Brimelow Estate Agents Ltd
 430 Barlow Moor Road, Manchester, M21 8AD
 Tel: 0161 8822233
 E: sales@jpbrimelow.co.uk www.jpandbrimelow.co.uk



JP & Brimelow
 ESTATE AGENTS

NOTICE: JP & Brimelow Estate Agents Ltd for themselves and for the vendors or lessors of this property whose agents they are give notice that:

- (i) the particulars are set out as a general outline only for the guidance of intending purchasers or lessees, and do not constitute, nor constitute part of, an offer or contract;
- (ii) all descriptions, dimensions, references to the condition and necessary permissions for use and occupation, and other details are given in good faith and are believed to be correct but any intending purchasers or tenants should not rely on them as statements or representations of fact but must satisfy themselves by inspection or otherwise as to the correctness of each of them;
- (iii) no person in the employment of JP & Brimelow Estate Agents Ltd has any authority to make or give any representation or warranty whatever in relation to this property.

jpandbrimelowstateagents

@jpandbrimelow

