

47 Whitebrook Road, Fallowfield, Manchester, M14 6EF



**JP&Brimelow**  
ESTATE AGENTS

# Offers In The Region Of £260,000

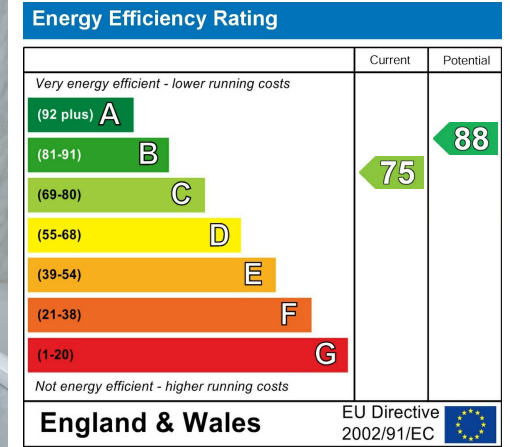
 3  1  1  C

\*\*\*VIDEO TOUR AVAILABLE\*\*\* A well-presented & spacious, THREE BEDROOM end of terraced property positioned in this attractive modern development situated off Yew Tree Road. A ten-minute walk from Wilmslow Road with a selection of shops, bars, restaurants and Sainsbury's supermarket. This well-planned accommodation comprises; an entrance hallway, a two-piece downstairs W.C, a lounge to the front aspect and double doors leading through to a fitted kitchen/dining room to the ground floor with French doors leading to the rear enclosed garden. Whilst to the first floor there is a landing leading to three bedrooms and a white three-piece family bathroom. Warmed by gas fired central heating and an enclosed rear garden. Close by to Old Moat Park, central Withington with a selection of amenities and the available bus routes giving you direct access into the city life. Within walking distance to good local primary schools, and the Fallowfield loop for walks, runs and cycling to Chorlton and Levenshulme. SOLD WITH NO VENDOR CHAIN.



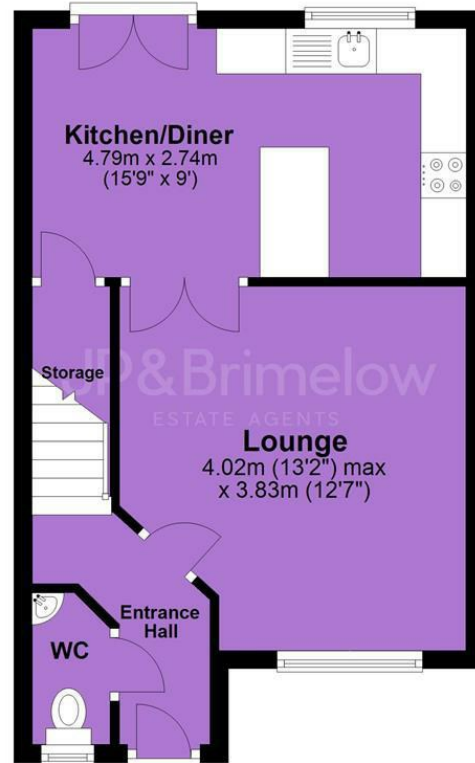


## EPC Chart

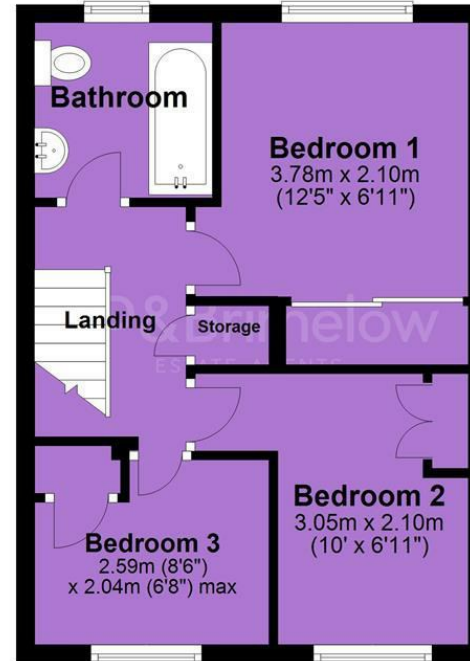


Tenure: **Leasehold** Council Tax Band: **C**

## Ground Floor



## First Floor



JP & Brimelow Estate Agents Ltd  
430 Barlow Moor Road, Manchester, M21 8AD  
Tel: 0161 8822233  
E: sales@jpbrimelow.co.uk www.jpandbrimelow.co.uk



**JP & Brimelow**  
ESTATE AGENTS

NOTICE: JP & Brimelow Estate Agents Ltd for themselves and for the vendors or lessors of this property whose agents they are give notice that:

- (i) the particulars are set out as a general outline only for the guidance of intending purchasers or lessees, and do not constitute, nor constitute part of, an offer or contract;
- (ii) all descriptions, dimensions, references to the condition and necessary permissions for use and occupation, and other details are given in good faith and are believed to be correct but any intending purchasers or tenants should not rely on them as statements or representations of fact but must satisfy themselves by inspection or otherwise as to the correctness of each of them;
- (iii) no person in the employment of JP & Brimelow Estate Agents Ltd has any authority to make or give any representation or warranty whatever in relation to this property.

 [jpandbrimelowstateagents](https://www.instagram.com/jpandbrimelowstateagents)

 [@jpandbrimelow](https://www.twitter.com/jpandbrimelow)