

52 Grange Road, Chorlton, Manchester, M21 9WX



**JP&Brimelow**  
ESTATE AGENTS





3 1 2 D

\*\*\*VIDEO TOUR AVAILABLE\*\*\* A charming and beautifully presented THREE DOUBLE BEDROOM bay fronted Edwardian semi-detached property positioned on a highly popular residential cul-de-sac off Kensington Road.

Within walking distance of Chorlton Village with all its local amenities, including restaurants, deli's, shops, bars on Manchester Road and several primary schools off Oswald Road. Close by to the Metrolink station on Wilbraham Road or Rye bank Road, Firswood, giving you direct access to the city centre and Media City at Salford Quays.

The well-planned property comprises; an entrance hallway, a lounge with a bay window to the front aspect, a family room opening to a fitted kitchen/breakfast room with French doors leading out into the rear enclosed garden.

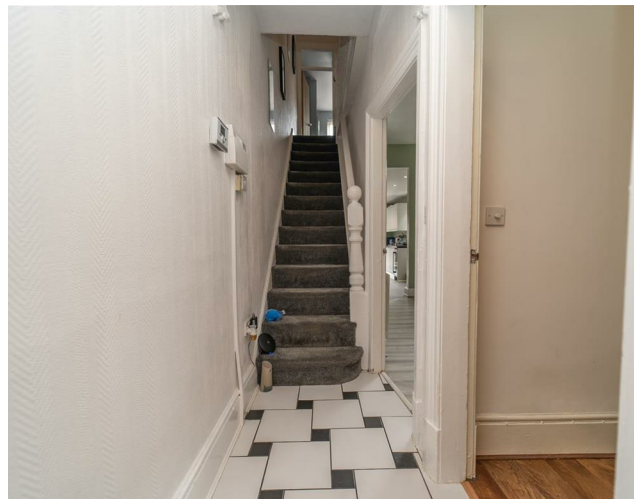
Whilst to the first floor there is a landing leading to three double bedrooms and an impressive four-piece shower room.

The property also benefits from high ceilings, being warmed by a Valliant boiler providing gas central heating, an alarm system, enclosed front garden with a path leading to the front door and a low maintenance paved enclosed rear garden surrounded by a timber fence.

With Longford Park on your doorstep with its open green space, childrens play area and coffee shop, the Barbakan Deli and the Unicorn loved by so many, is a short walk away on Manchester Road.

£545,000

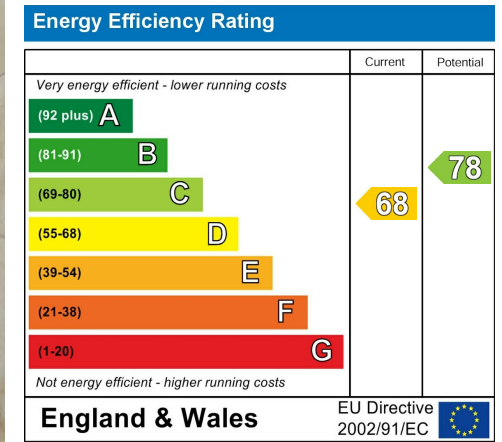






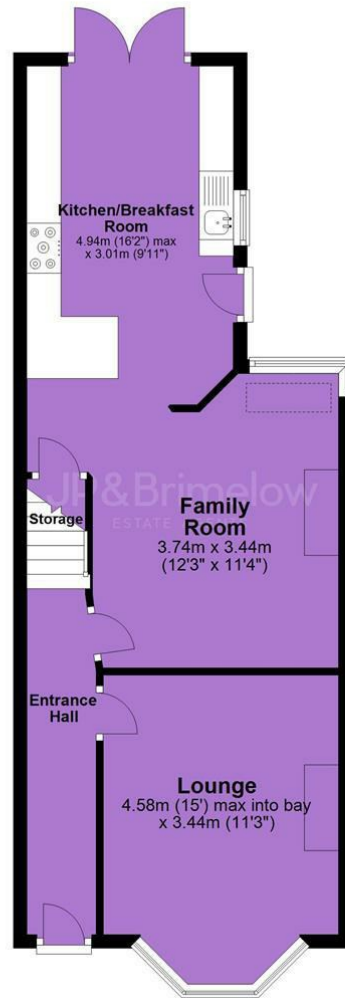


## EPC Chart



Tenure: Freehold Council Tax Band: C

### Ground Floor



### First Floor



JP & Brimelow Estate Agents Ltd  
430 Barlow Moor Road, Manchester, M21 8AD  
Tel: 0161 8822233  
E: sales@jpbrimelow.co.uk www.jpandbrimelow.co.uk



**JP & Brimelow**  
ESTATE AGENTS

NOTICE: JP & Brimelow Estate Agents Ltd for themselves and for the vendors or lessors of this property whose agents they give notice that:

- (i) the particulars are set out as a general outline only for the guidance of intending purchasers or lessees, and do not constitute, nor constitute part of, an offer or contract;
- (ii) all descriptions, dimensions, references to the condition and necessary permissions for use and occupation, and other details are given in good faith and are believed to be correct but any intending purchasers or tenants should not rely on them as statements or representations of fact but must satisfy themselves by inspection or otherwise as to the correctness of each of them;
- (iii) no person in the employment of JP & Brimelow Estate Agents Ltd has any authority to make or give any representation or warranty whatever in relation to this property.

 [jpandbrimelowstateagents](https://www.instagram.com/jpandbrimelowstateagents)

 [@jpandbrimelow](https://twitter.com/jpandbrimelow)



