

# Flat 19 Harper House Slade Lane, Levenshulme, Manchester, M19 2AF



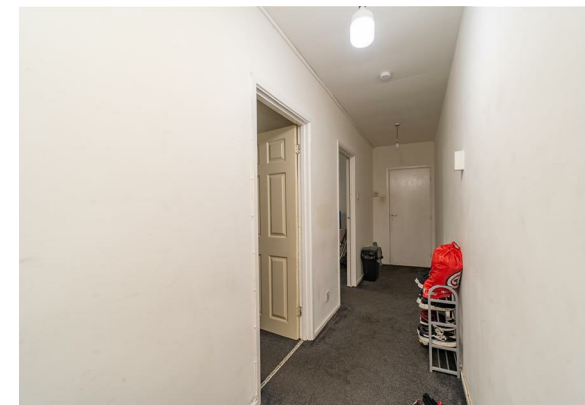
**JP&Brimelow**  
ESTATE AGENTS



# Offers In The Region Of £140,000




\*\*\*VIDEO TOUR AVAILABLE\*\*\* A spacious TWO BEDROOM ground floor apartment within this popular purpose-built development situated in Levenshulme located off Albert Road. IN NEED OF COMESTIC UPDATING THROUGHOUT. Close by to fantastic transport links creating easy access to Manchester city centre and Manchester airport. This well-planned property consists; a communal entrance hallway, a private entrance hallway leading to two bedrooms, a lounge/dining room with access into the kitchen and a three-piece white bathroom. The property also features wall mounted electric heaters, communal lawned gardens and resident parking. Just a ten-minute walk to an array of restaurants, shops and other eateries on Stockport Road. OFFERED WITH NO VENDOR CHAIN.





## EPC Chart

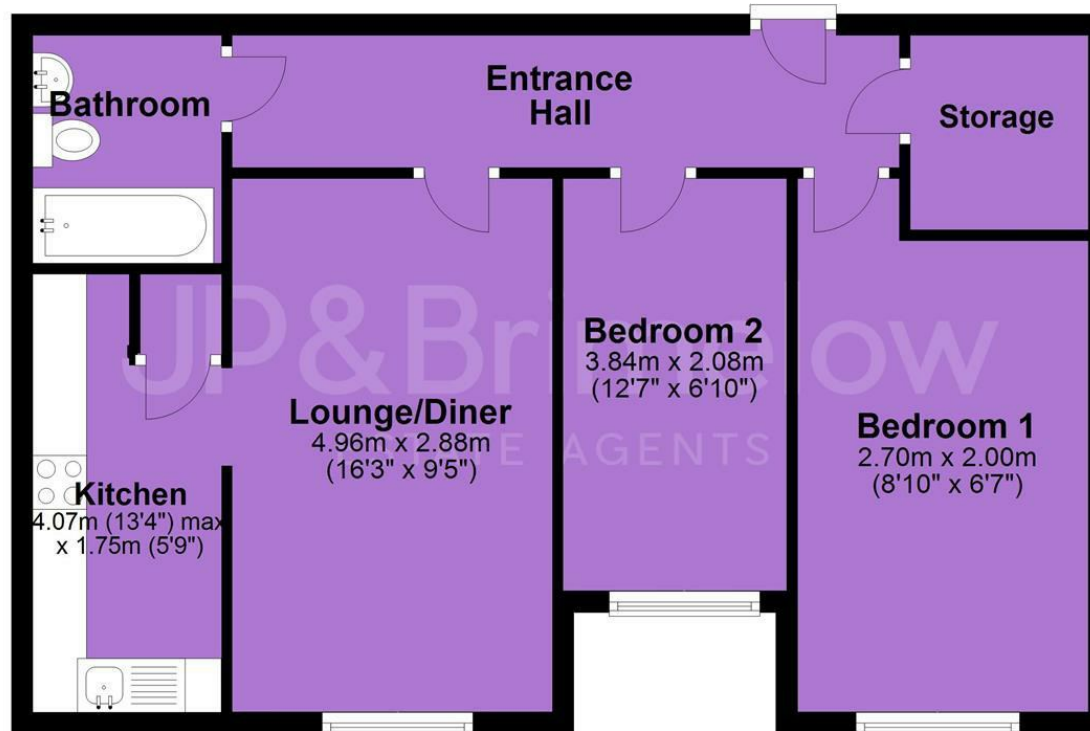
Energy Efficiency Rating		
	Current	Potential
<i>Very energy efficient - lower running costs</i>		
(92 plus) <b>A</b>		
(81-91) <b>B</b>		
(69-80) <b>C</b>		
(55-68) <b>D</b>	<b>57</b>	<b>60</b>
(39-54) <b>E</b>		
(21-38) <b>F</b>		
(1-20) <b>G</b>		
<i>Not energy efficient - higher running costs</i>		
<b>England &amp; Wales</b>	EU Directive 2002/91/EC 	



Photo's and video tour  
captured whilst  
property is tenanted

Tenure: **Leasehold** Council Tax Band: **A**

## Ground Floor



JP & Brimelow Estate Agents Ltd  
430 Barlow Moor Road, Manchester, M21 8AD  
Tel: 0161 8822233  
E: sales@jpbrimelow.co.uk www.jpandbrimelow.co.uk



**JP & Brimelow**  
ESTATE AGENTS

NOTICE: JP & Brimelow Estate Agents Ltd for themselves and for the vendors or lessors of this property whose agents they are give notice that:

- (i) the particulars are set out as a general outline only for the guidance of intending purchasers or lessees, and do not constitute, nor constitute part of, an offer or contract;
- (ii) all descriptions, dimensions, references to the condition and necessary permissions for use and occupation, and other details are given in good faith and are believed to be correct but any intending purchasers or tenants should not rely on them as statements or representations of fact but must satisfy themselves by inspection or otherwise as to the correctness of each of them;
- (iii) no person in the employment of JP & Brimelow Estate Agents Ltd has any authority to make or give any representation or warranty whatever in relation to this property.

jpandbrimelowstateagents

@jpandbrimelow