

8 Dalmorton Road, Chorlton, Manchester, M21 0YQ

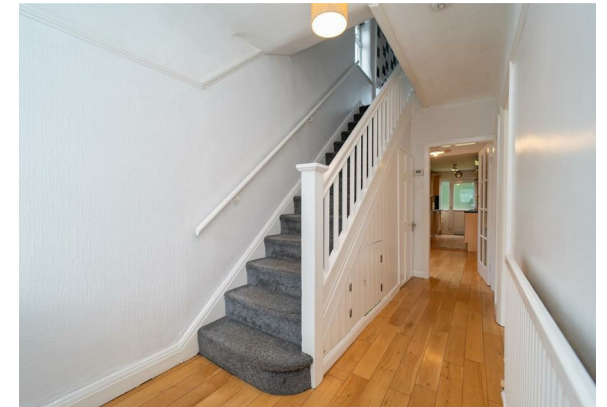


JP&Brimelow
ESTATE AGENTS

Offers In The Region Of £440,000

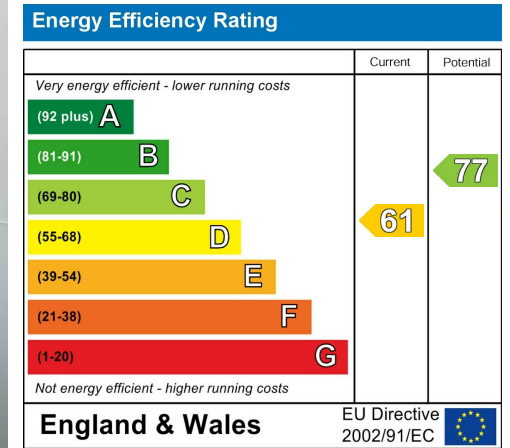


VIDEO TOUR AVAILABLE A well-presented THREE BEDROOM, bay fronted, 1920's semi-detached property on a popular tree lined residential cul-de-sac off Daventry Road in Chorlton. Within a ten-minute walk of the Metrolink station situated on St Werburghs Road. With easy access to the City Centre, Manchester International Airport and Media City. Strolling distance to Chorlton Park, Chorlton centre and Beech Road amenities. In brief the accommodation consists of a porch, an entrance hall, a two-piece downstairs W.C, a lounge with a bay window to the front aspect, a dining room with access into the rear enclosed mature lawned garden and an extended kitchen/breakfast room to the ground floor, with access to the rear. Whilst to the first floor there is landing leading to three bedrooms and a white three-piece bathroom. The property is warmed by gas fired central heating, a gated driveway providing off road parking, an enclosed garden to the front and a beautiful enclosed rear garden. OFFERED WITH NO VENDOR CHAIN.





EPC Chart



Tenure: **Freehold** Council Tax Band: **C**



JP & Brimelow Estate Agents Ltd
 430 Barlow Moor Road, Manchester, M21 8AD
 Tel: 0161 8822233
 E: sales@jpbrimelow.co.uk www.jpandbrimelow.co.uk



JP & Brimelow
 ESTATE AGENTS

NOTICE: JP & Brimelow Estate Agents Ltd for themselves and for the vendors or lessors of this property whose agents they are give notice that:

- (i) the particulars are set out as a general outline only for the guidance of intending purchasers or lessees, and do not constitute, nor constitute part of, an offer or contract;
- (ii) all descriptions, dimensions, references to the condition and necessary permissions for use and occupation, and other details are given in good faith and are believed to be correct but any intending purchasers or tenants should not rely on them as statements or representations of fact but must satisfy themselves by inspection or otherwise as to the correctness of each of them;
- (iii) no person in the employment of JP & Brimelow Estate Agents Ltd has any authority to make or give any representation or warranty whatever in relation to this property.

jpandbrimelowstateagents

@jpandbrimelow