

Yew Tree Flat, Mayfair Mansions Mersey Road, Didsbury, Manchester, M20 2PY



JP & Brimelow
ESTATE AGENTS

Offers In The Region Of £440,000

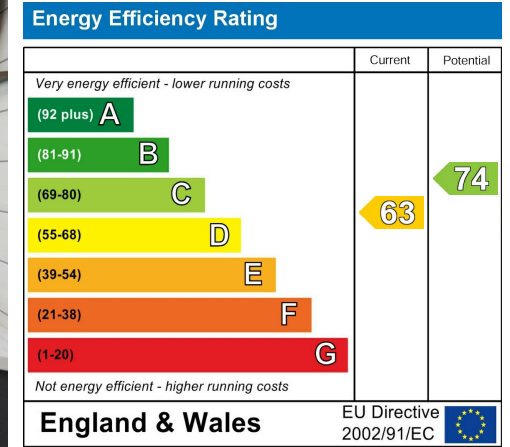


VIDEO TOUR AVAILABLE A TWO DOUBLE BEDROOM, first floor apartment within this highly popular development, positioned off Mersey Road in Didsbury. Within a short stroll from both Didsbury Village and Burton Road with its array of independent boutique shops, popular bars and restaurants. Metrolink stations on Burton Road and Didsbury village give you direct access into the City centre, Manchester International Airport and Media City. The well-planned accommodation consists of a communal entrance with staircase to the first floor, a private entrance/reception hallway, a lounge/dining room with a stunning bay window, a fitted kitchen, two double bedrooms the master bedroom benefits from an en-suite three-piece shower room, a four-piece family bathroom with laundry facilities and a study. This apartment benefits from being warmed by gas fired central heating, secure parking, useful chamber cellars providing storage and communal gardens.



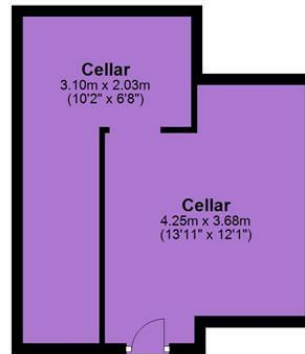


EPC Chart

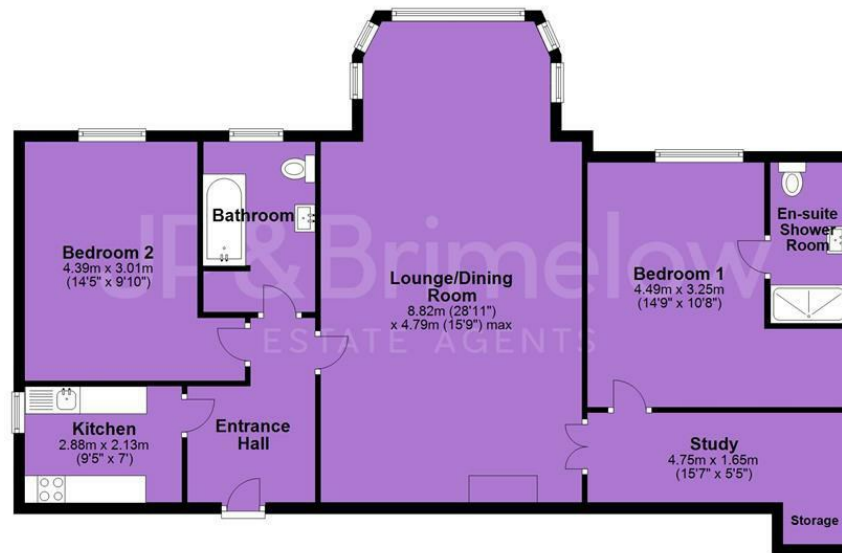


Tenure: **Leasehold** Council Tax Band: **D**

Cellar



First Floor



JP & Brimelow Estate Agents Ltd
430 Barlow Moor Road, Manchester, M21 8AD
Tel: 0161 8822233
E: sales@jpbrimelow.co.uk www.jpandbrimelow.co.uk



JP & Brimelow
ESTATE AGENTS

NOTICE: JP & Brimelow Estate Agents Ltd for themselves and for the vendors or lessors of this property whose agents they are give notice that:

- (i) the particulars are set out as a general outline only for the guidance of intending purchasers or lessees, and do not constitute, nor constitute part of, an offer or contract;
- (ii) all descriptions, dimensions, references to the condition and necessary permissions for use and occupation, and other details are given in good faith and are believed to be correct but any intending purchasers or tenants should not rely on them as statements or representations of fact but must satisfy themselves by inspection or otherwise as to the correctness of each of them;
- (iii) no person in the employment of JP & Brimelow Estate Agents Ltd has any authority to make or give any representation or warranty whatever in relation to this property.

jpandbrimelowstateagents

@jpandbrimelow