

Flat 8 30-32 Catterick Road, Didsbury, Manchester, M20 6HJ



JP&Brimelow
ESTATE AGENTS

Offers In The Region Of £280,000

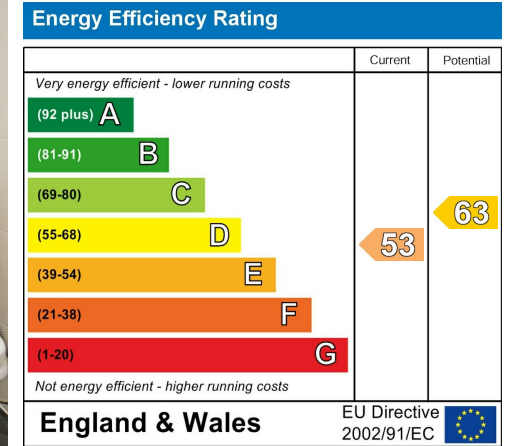


VIDEO TOUR AVAILABLE A well-kept and spacious TWO DOUBLE BEDROOM, top floor apartment positioned on a sought-after tree-lined road in Didsbury off School Lane. This attractive apartment is located within strolling distance to all the independent shops, restaurants bars on Wilmslow Road, as well as excellent transport links to both Manchester City Centre and Manchester International Airport via the Metrolink station off School Lane. The well-planned accommodation consists of a communal entrance lobby with stairs leading to all floors, a private entrance hallway, two double bedrooms with the master benefiting from an en-suite shower room, an open plan living space a fitted kitchen and breakfast island. There is a wealth of features to include; high ceilings, warmed by gas fired central heating, secure gated entry with allocated resident parking and well maintained communal gardens.



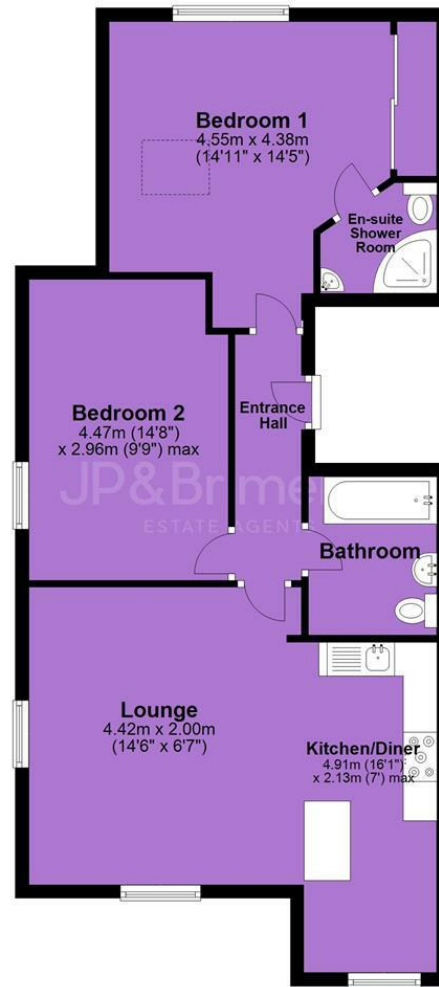


EPC Chart



Tenure: **Leasehold** Council Tax Band: **C**

Top Floor



JP & Brimelow Estate Agents Ltd
430 Barlow Moor Road, Manchester, M21 8AD
Tel: 0161 8822233
E: sales@jpbrimelow.co.uk www.jpandbrimelow.co.uk



JP & Brimelow
ESTATE AGENTS

NOTICE: JP & Brimelow Estate Agents Ltd for themselves and for the vendors or lessors of this property whose agents they are give notice that:

- the particulars are set out as a general outline only for the guidance of intending purchasers or lessees, and do not constitute, nor constitute part of, an offer or contract;
- all descriptions, dimensions, references to the condition and necessary permissions for use and occupation, and other details are given in good faith and are believed to be correct but any intending purchasers or tenants should not rely on them as statements or representations of fact but must satisfy themselves by inspection or otherwise as to the correctness of each of them;
- no person in the employment of JP & Brimelow Estate Agents Ltd has any authority to make or give any representation or warranty whatever in relation to this property.

jpbndbrimelowstateagents

@jpandbrimelow