

7 Hastings Avenue, Chorlton, Manchester, M21 9JS



JP&Brimelow
ESTATE AGENTS



6 5 5 D

VIDEO TOUR AVAILABLE Welcome to this spacious & attractive period bay fronted semi-detached property. This impressive SIX BEDROOM house is located on Hastings Avenue in Chorlton and is currently split into three flats over four floors.

This impressive property is situated in a highly desirable residential location in the heart of Chorlton. Close to all local amenities including restaurants and shops on Barlow Moor Road and the Metrolink station on Wilbraham Road, giving you direct access to City life and Media City at Salford Quays.

The well-planned property with split accommodation, expanding over four floors consists of a self-contained basement flat with its own private entrance leading to a lounge/diner, white four-piece bathroom suite, kitchen area and two good sized bedrooms.

To the ground floor there is an entrance hall, private entrance, bedroom with bay window to the front aspect, white three-piece suite, kitchen, lounge/ diner and good-sized bedroom this completes the ground floor apartment.

To the first floor is apartment two consisting of a communal dining area, family room leading out to a balcony, bathroom and separate W.C, kitchen and lounge with bay window.

The second floor consists of two double bedrooms and a three-piece shower room.

The property benefits from gas fired central heating, off-road parking and original features throughout.

Excellent opportunity to convert the property back into one impressive family home or retain as individual flat units.

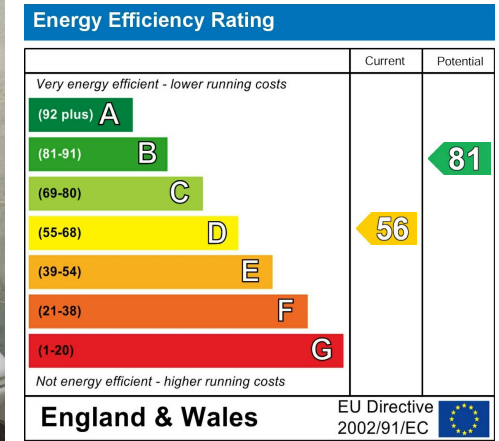
OFFERED WITH NO VENDOR CHAIN.

£750,000



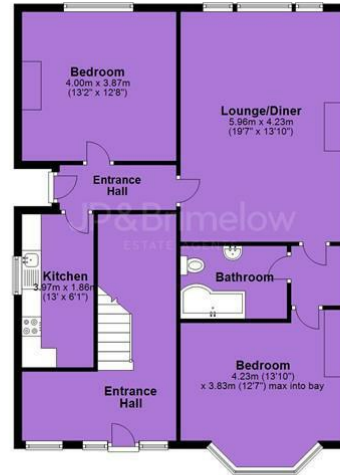


EPC Chart

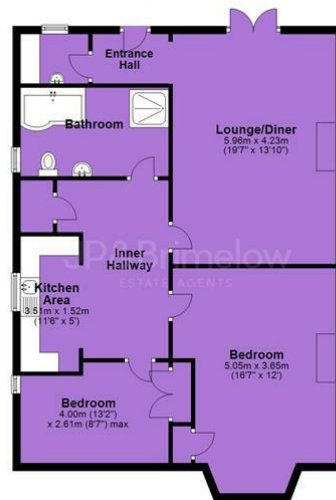


Tenure: Freehold Council Tax Band: C

Ground Floor



Basement



First Floor



Second Floor



JP & Brimelow Estate Agents Ltd
 430 Barlow Moor Road, Manchester, M21 8AD
 Tel: 0161 8822233
 E: sales@jpbrimelow.co.uk www.jpandbrimelow.co.uk



JP & Brimelow
 ESTATE AGENTS

NOTICE: JP & Brimelow Estate Agents Ltd for themselves and for the vendors or lessors of this property whose agents they are give notice that:

- (i) the particulars are set out as a general outline only for the guidance of intending purchasers or lessees, and do not constitute, nor constitute part of, an offer or contract;
- (ii) all descriptions, dimensions, references to the condition and necessary permissions for use and occupation, and other details are given in good faith and are believed to be correct but any intending purchasers or tenants should not rely on them as statements or representations of fact but must satisfy themselves by inspection or otherwise as to the correctness of each of them;
- (iii) no person in the employment of JP & Brimelow Estate Agents Ltd has any authority to make or give any representation or warranty whatever in relation to this property.

@jpandbrimelowstateagents

@jpandbrimelow

