

26 Athol Road, Whalley Range, Manchester, M16 8QN



**JP & Brimelow**  
ESTATE AGENTS



 5  2  2  E

\*\*\*VIDEO TOUR AVAILABLE\*\*\* An attractive and spacious, bay fronted FIVE BEDROOM Victorian mid- terrace property set over four floors. Situated on a tree lined residential road just off Wilbraham Road in Whalley Range.

All the amenities of Chorlton nearby with its independent bars, cafes and restaurants. With fantastic transport links located near by giving you direct access into Manchester City centre and Manchester international airport.

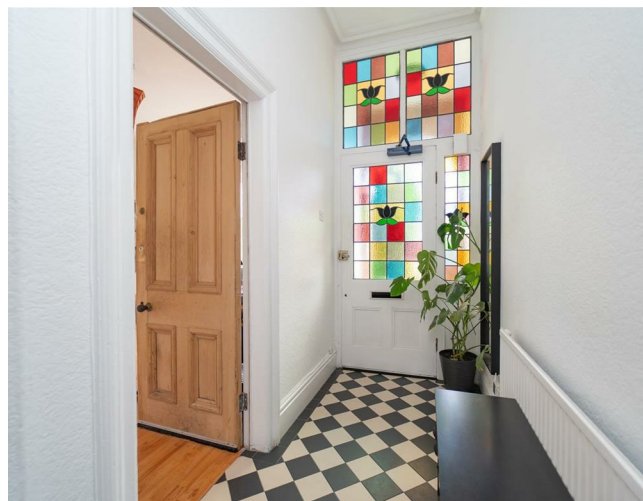
The well-planned property consists of an entrance hall, lounge with bay window to the front aspect, kitchen, utility room also allowing access into the useful chamber cellars and out into the rear garden, a downstairs shower room and dining room to the rear aspect with views into the rear enclosed garden.

Stairs leading to the first-floor landing reveals three good sized bedrooms and a white three-piece bathroom.

Whilst to the second floor there is a landing leading to further two good sized bedrooms.

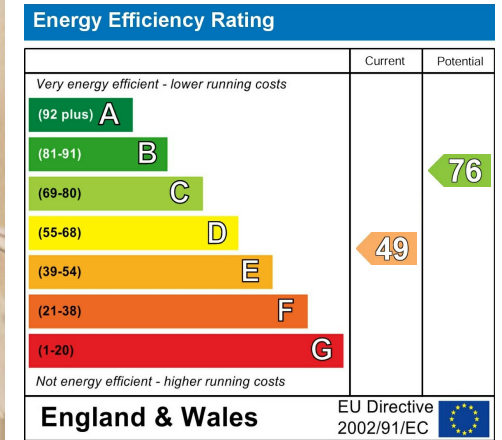
The property benefits from gas fired central heating, original fireplaces, cornicing, high ceilings, useful chamber cellars, a driveway to the front providing off road parking and a rear enclosed lawned garden with a raised patio area.

£565,000





## EPC Chart



Tenure: Freehold Council Tax Band: D



JP & Brimelow Estate Agents Ltd  
 430 Barlow Moor Road, Manchester, M21 8AD  
 Tel: 0161 8822233  
 E: sales@jpbrimelow.co.uk www.jpandbrimelow.co.uk



**JP & Brimelow**  
 ESTATE AGENTS

NOTICE: JP & Brimelow Estate Agents Ltd for themselves and for the vendors or lessors of this property whose agents they are give notice that:

- (i) the particulars are set out as a general outline only for the guidance of intending purchasers or lessees, and do not constitute, nor constitute part of, an offer or contract;
- (ii) all descriptions, dimensions, references to the condition and necessary permissions for use and occupation, and other details are given in good faith and are believed to be correct but any intending purchasers or tenants should not rely on them as statements or representations of fact but must satisfy themselves by inspection or otherwise as to the correctness of each of them;
- (iii) no person in the employment of JP & Brimelow Estate Agents Ltd has any authority to make or give any representation or warranty whatever in relation to this property.

jpandbrimelowstateagents

@jpandbrimelow

