

1 Rowan Avenue, Whalley Range, Manchester, M16 8AP



**JP&Brimelow**  
ESTATE AGENTS





4 2 3 D

\*\*\*VIDEO TOUR AVAILABLE\*\*\* Welcome to Rowan Avenue, Whalley Range - a charming location for this delightful FOUR BEDROOM semi-detached house. This property boasts three reception rooms, perfect for entertaining guests or simply relaxing. The two bathrooms ensure convenience for all residents, making busy mornings a breeze.

Situated in the leafy suburb of Whalley Range, this home offers a tranquil escape from the hustle and bustle of city life. The well-kept gardens provide a serene outdoor space where you can enjoy the fresh air and perhaps indulge in some gardening if you have a green thumb.

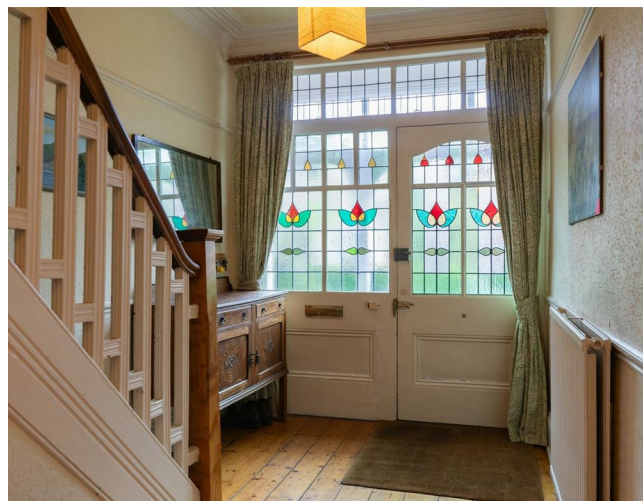
One of the highlights of this property is its original features, adding character and charm to the space. From elegant cornices to beautiful fireplaces, each detail tells a story of the house's history and adds a touch of elegance to the modern living space.

Conveniently located near Hilary Step, and a short stroll from the thriving community venue, the Carlton Club.

Don't miss the opportunity to make this spacious 4-bedroom semi-detached house in Whalley Range your new home. With its blend of original features, well-kept gardens, and proximity to Alexandra Park, this property offers a lifestyle of comfort and tranquillity in a sought-after location.

£575,000

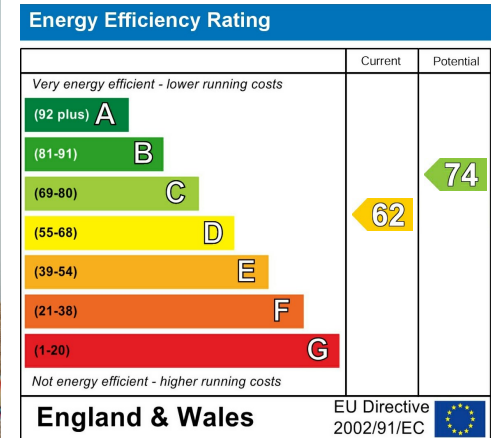








## EPC Chart



Tenure: Freehold Council Tax Band: C



JP & Brimelow Estate Agents Ltd  
 430 Barlow Moor Road, Manchester, M21 8AD  
 Tel: 0161 8822233  
 E: sales@jpbrimelow.co.uk www.jpandbrimelow.co.uk



**JP & Brimelow**  
 ESTATE AGENTS

NOTICE: JP & Brimelow Estate Agents Ltd for themselves and for the vendors or lessors of this property whose agents they are give notice that:

- (i) the particulars are set out as a general outline only for the guidance of intending purchasers or lessees, and do not constitute, nor constitute part of, an offer or contract;
- (ii) all descriptions, dimensions, references to the condition and necessary permissions for use and occupation, and other details are given in good faith and are believed to be correct but any intending purchasers or tenants should not rely on them as statements or representations of fact but must satisfy themselves by inspection or otherwise as to the correctness of each of them;
- (iii) no person in the employment of JP & Brimelow Estate Agents Ltd has any authority to make or give any representation or warranty whatever in relation to this property.

jpandbrimelowstateagents

@jpandbrimelow



