

375 Barlow Moor Road, Chorlton, Manchester, M21 7FZ



375
JP & Brimelow
ESTATE AGENTS



 5  2  3  D

VIDEO TOUR AVAILABLE A Beautifully presented and extended FIVE BEDROOM, bay fronted semi- detached property. Located in a central location here in Chorlton on Barlow Moor Road.

The property is located across from Chorlton Park and just a short walk to the River Mersey, nearby to several local primary and secondary schools. Close by to Chorlton Water Park, fantastic transport links into Manchester city centre with the Metrolink station a short stroll away and Manchester International Airport via the M56 motorway.

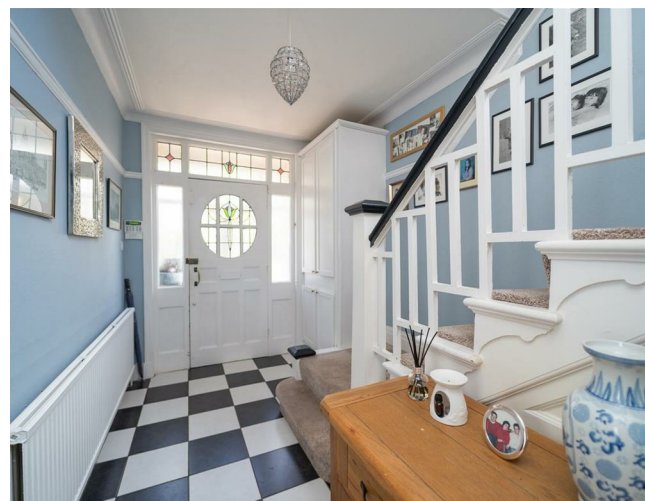
The accommodation comprises of a porch, decorative tiled hallway, lounge with a stained-glass bay window to the front aspect, a good-sized family room with picture rails and coving which leads to the extended kitchen/ dining room. A conservatory can also be found leading off the kitchen/ diner with double door leading out into the rear enclosed garden.

To the first floor there are four well-proportioned bedrooms one benefitting from built in wardrobes. A modern white three-piece bathroom.

Stairs leading up to the second floor reveal a further good-sized bedroom with useful eaves storage and an en-suite three-piece bathroom completing this lovely home.

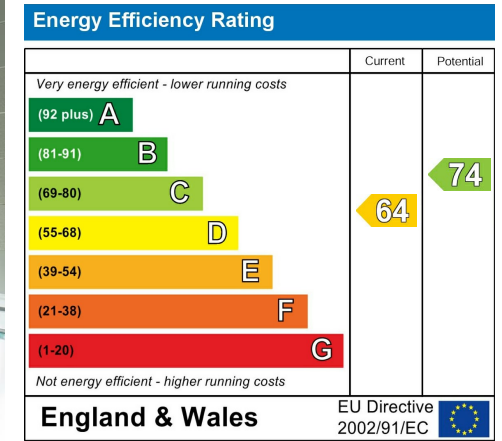
The property benefits from being warmed by gas fired central heating, having a driveway providing off road parking, original features, high ceiling, a useful detached outdoor office storage space and a good sized rear enclosed garden.

£675,000





EPC Chart



Tenure: Freehold Council Tax Band: D



JP & Brimelow Estate Agents Ltd
 430 Barlow Moor Road, Manchester, M21 8AD
 Tel: 0161 8822233
 E: sales@jpbrimelow.co.uk www.jpandbrimelow.co.uk



JP & Brimelow
 ESTATE AGENTS

NOTICE: JP & Brimelow Estate Agents Ltd for themselves and for the vendors or lessors of this property whose agents they are give notice that:
 (i) the particulars are set out as a general outline only for the guidance of intending purchasers or lessees, and do not constitute, nor constitute part of, an offer or contract;
 (ii) all descriptions, dimensions, references to the condition and necessary permissions for use and occupation, and other details are given in good faith and are believed to be correct but any intending purchasers or tenants should not rely on them as statements or representations of fact but must satisfy themselves by inspection or otherwise as to the correctness of each of them;
 (iii) no person in the employment of JP & Brimelow Estate Agents Ltd has any authority to make or give any representation or warranty whatever in relation to this property.

jpandbrimelowstateagents
 @jpandbrimelow

