

53 Longford Road, Chorlton, Manchester, M21 9WP



JP & Brimelow
ESTATE AGENTS



 4  2  2  D

VIDEO TOUR AVAILABLE A tastefully extended FOUR DOUBLE BEDROOM, bay fronted home. This semi-detached property is situated on a popular residential road, off Oswald Road.

Within walking distance of Chorlton Village, with an array of amenities including restaurants, deli's, shops and several primary schools nearby. Longford Park positioned at the bottom of the road and the Metrolink station on Wilbraham Road gives you direct access into the City Centre and Media City at Salford Quays.

In brief the well-planned accommodation consists of an entrance hall, a lounge with a bay window to the front aspect, a dining room with access to the rear enclosed garden and through to an impressive open fitted kitchen/breakfast room, completing the ground floor.

To the first floor there is a landing leading to three double bedrooms and a modern three-piece family bathroom. Stairs lead to the second floor, where you will find a further double bedroom with a three-piece ensuite shower room.

Additionally, the property benefits from many period features throughout, such as a cast-iron fire place, picture railing and ceiling coving, is warmed by gas fired central heating and has an enclosed rear lawned garden.

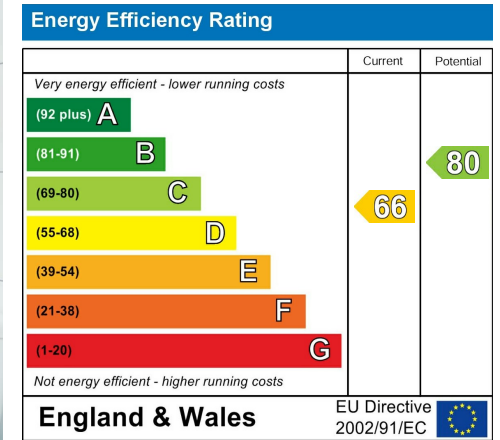
OFFERED WITH NO VENDOR CHAIN.

£595,000

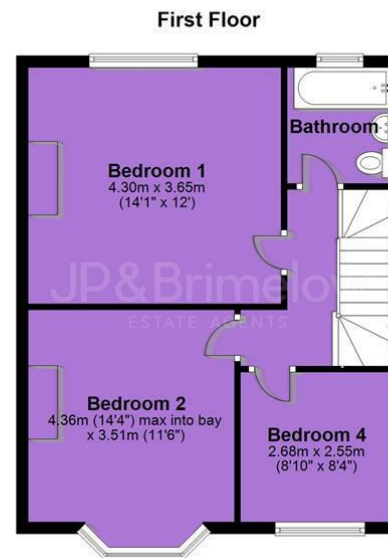
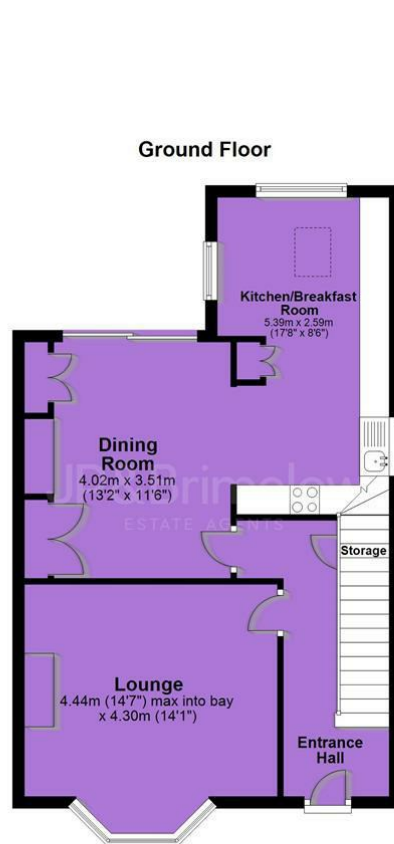




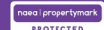
EPC Chart



Tenure: Freehold Council Tax Band: C



JP & Brimelow Estate Agents Ltd
430 Barlow Moor Road, Manchester, M21 8AD
Tel: 0161 8822233
E: sales@jpbrimelow.co.uk www.jpandbrimelow.co.uk



JP & Brimelow
ESTATE AGENTS

NOTICE: JP & Brimelow Estate Agents Ltd for themselves and for the vendors or lessors of this property whose agents they are give notice that:

- (i) the particulars are set out as a general outline only for the guidance of intending purchasers or lessees, and do not constitute, nor constitute part of, an offer or contract;
- (ii) all descriptions, dimensions, references to the condition and necessary permissions for use and occupation, and other details are given in good faith and are believed to be correct but any intending purchasers or tenants should not rely on them as statements or representations of fact but must satisfy themselves by inspection or otherwise as to the correctness of each of them;
- (iii) no person in the employment of JP & Brimelow Estate Agents Ltd has any authority to make or give any representation or warranty whatever in relation to this property.

jpandbrimelowstateagents

@jpandbrimelow

